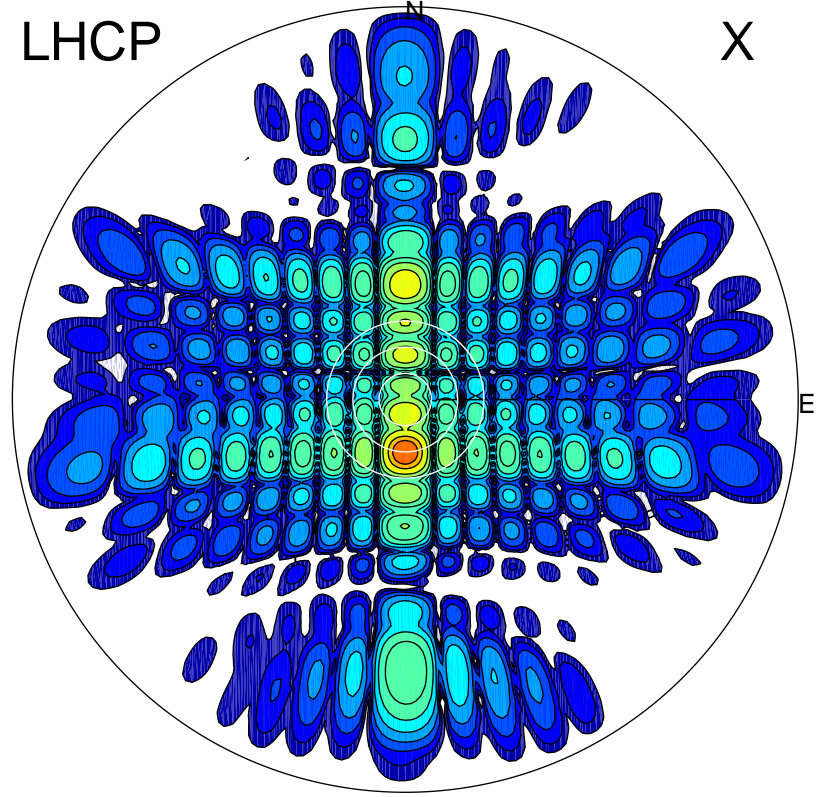


2016-03-04 14:06:00 A1 6.96000000 MHz 766.0 kW

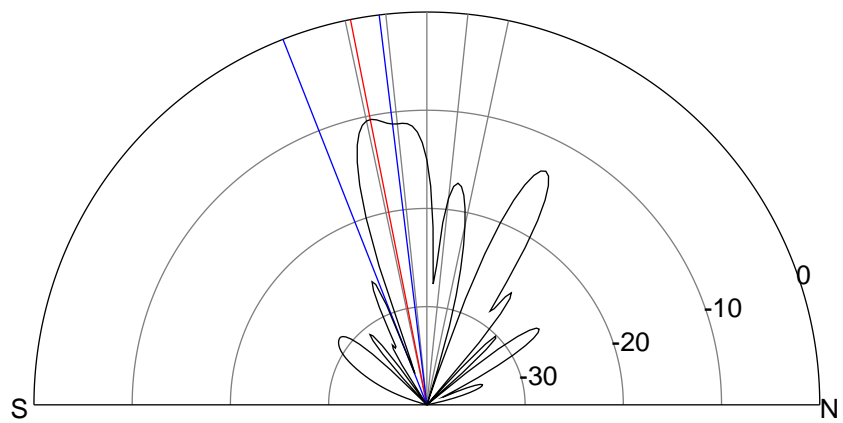
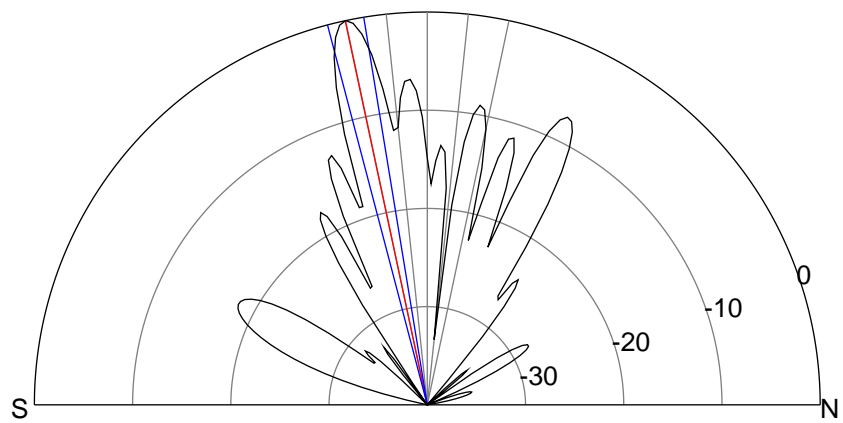
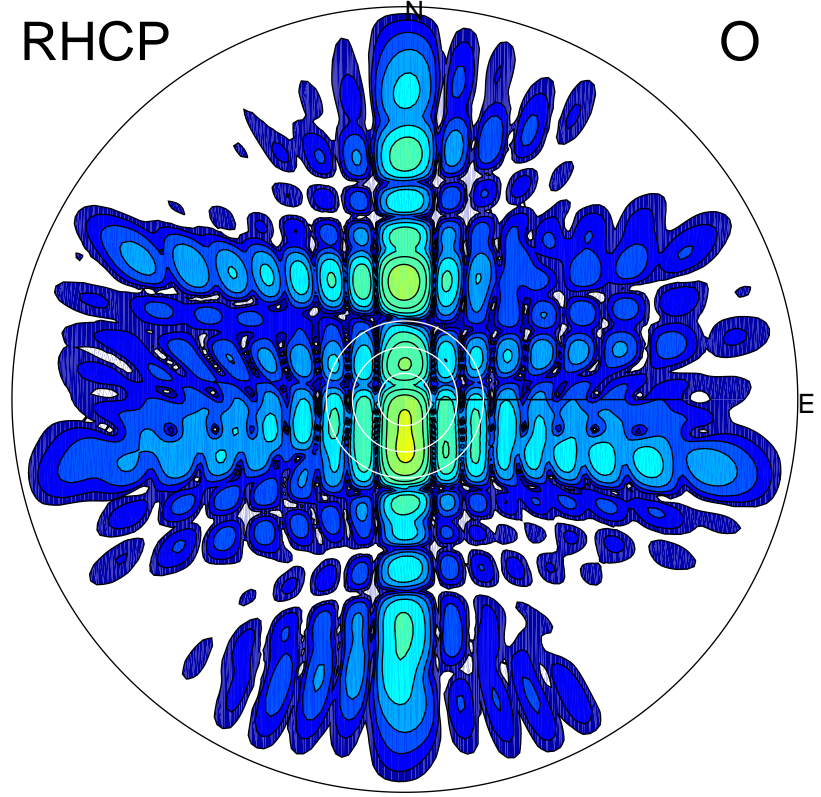
LHCP

X



RHCP

O



ERP 458.3 MW

Peak gain 27.8 dBi at Az 180 Zen 12
RHCP gain 17.3 dBi
N-S peak 27.8 dBi at Zen -12.1
N-S -3 dB beamwidth 5.4 deg.

ERP 42.0 MW

Peak gain 17.4 dBi at Az 179 Zen 11
LHCP gain 27.3 dBi
N-S peak 17.4 dBi at Zen -11.2
N-S -3 dB beamwidth 14.5 deg.