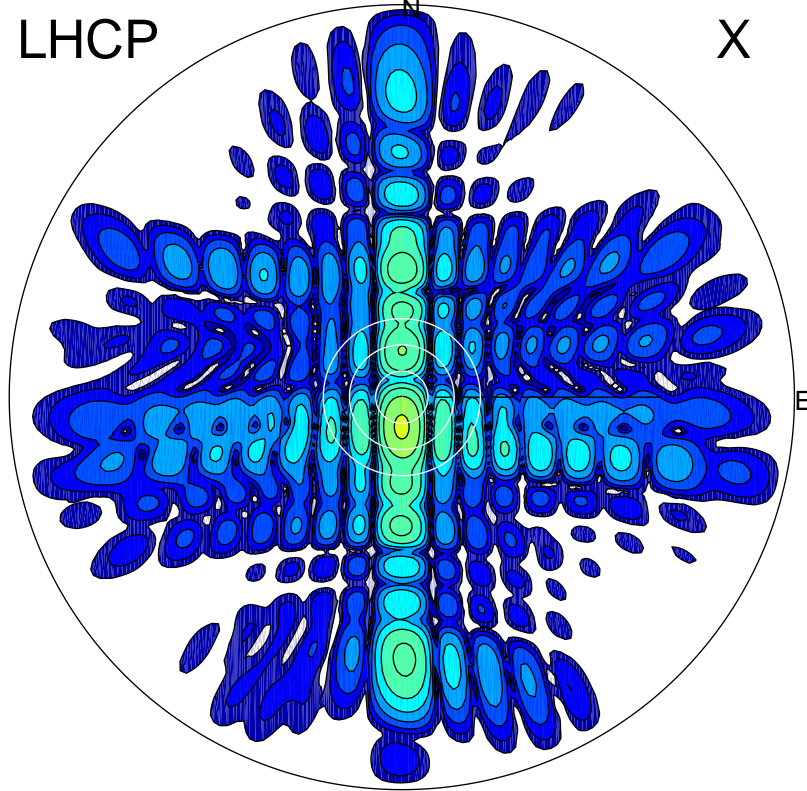


2016-03-04 14:02:02 A1 6.96000000 MHz 761.0 kW

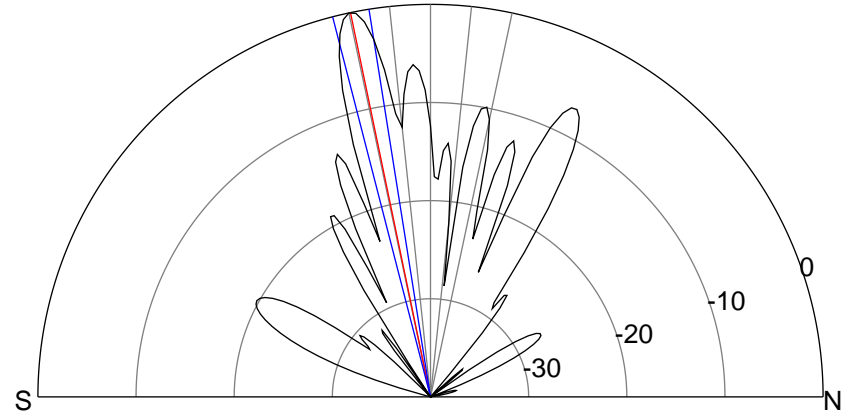
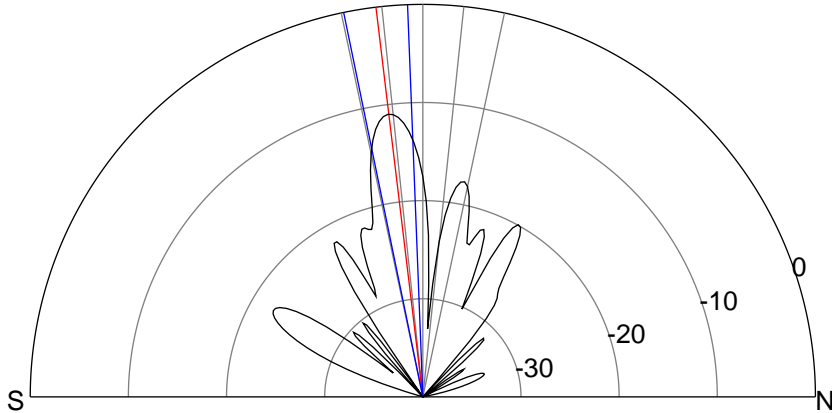
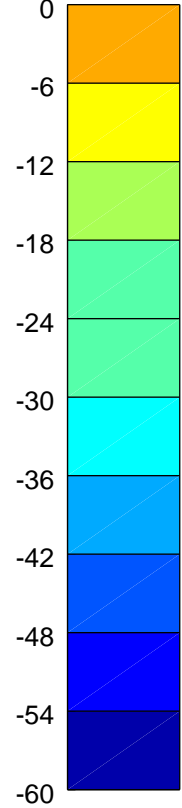
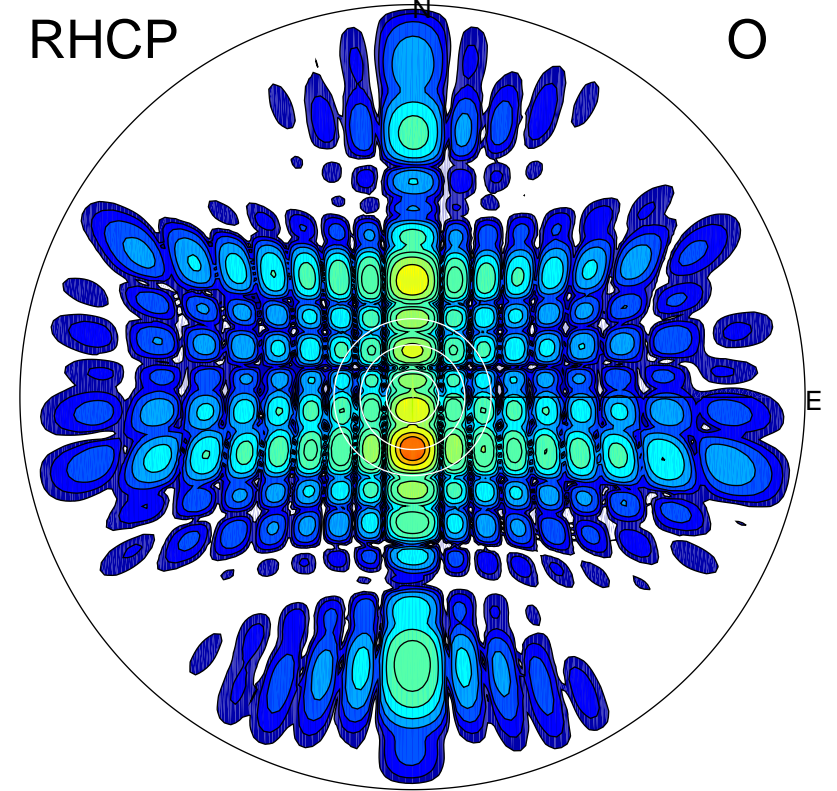
LHCP

X



RHCP

O



ERP 38.6 MW

Peak gain 17.1 dBi at Az 180 Zen 7
RHCP gain 17.1 dBi
N-S peak 17.1 dBi at Zen -6.9
N-S -3 dB beamwidth 9.4 deg.

ERP 484.4 MW

Peak gain 28.0 dBi at Az 180 Zen 12
LHCP gain 13.4 dBi
N-S peak 28.1 dBi at Zen -11.8
N-S -3 dB beamwidth 5.4 deg.