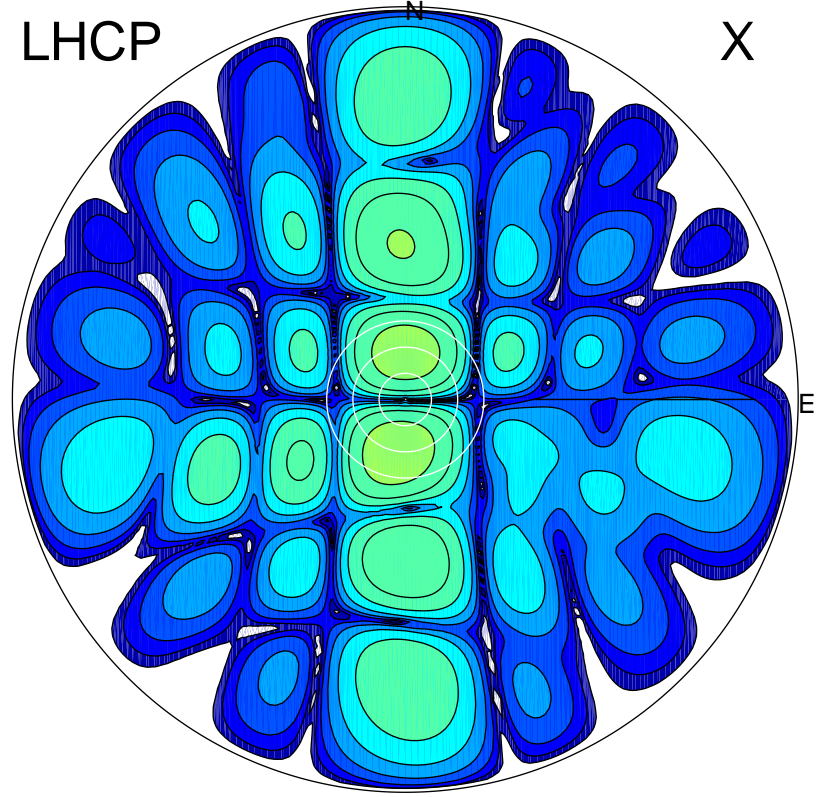


2016-03-03 17:47:02 A2 4.04000000 MHz 727.0 kW

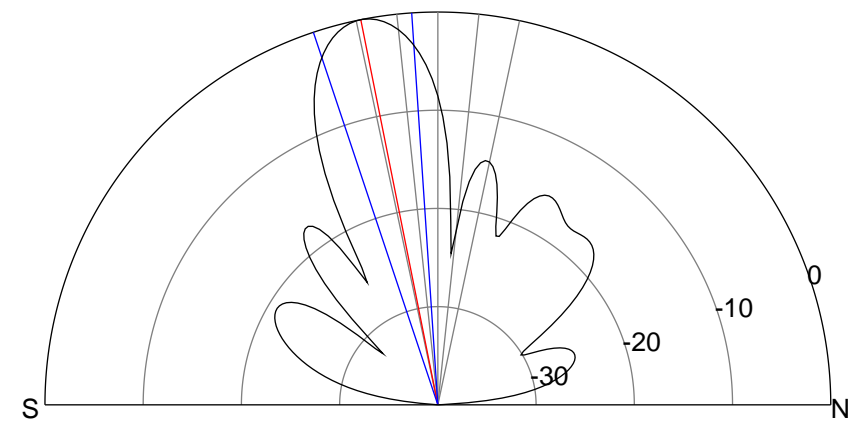
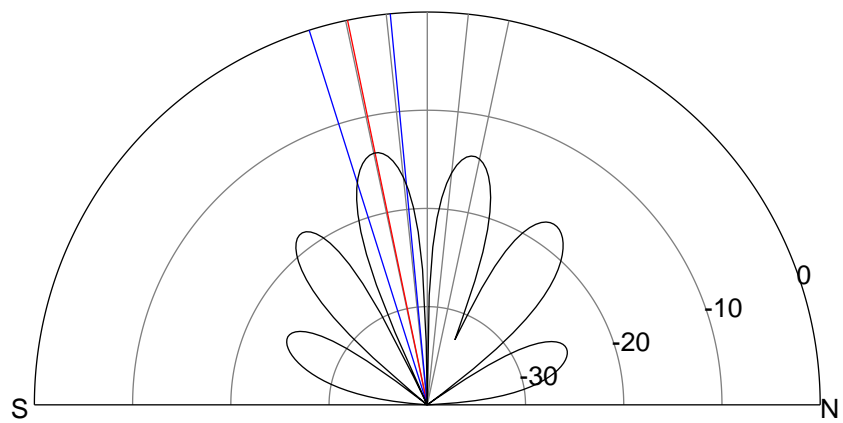
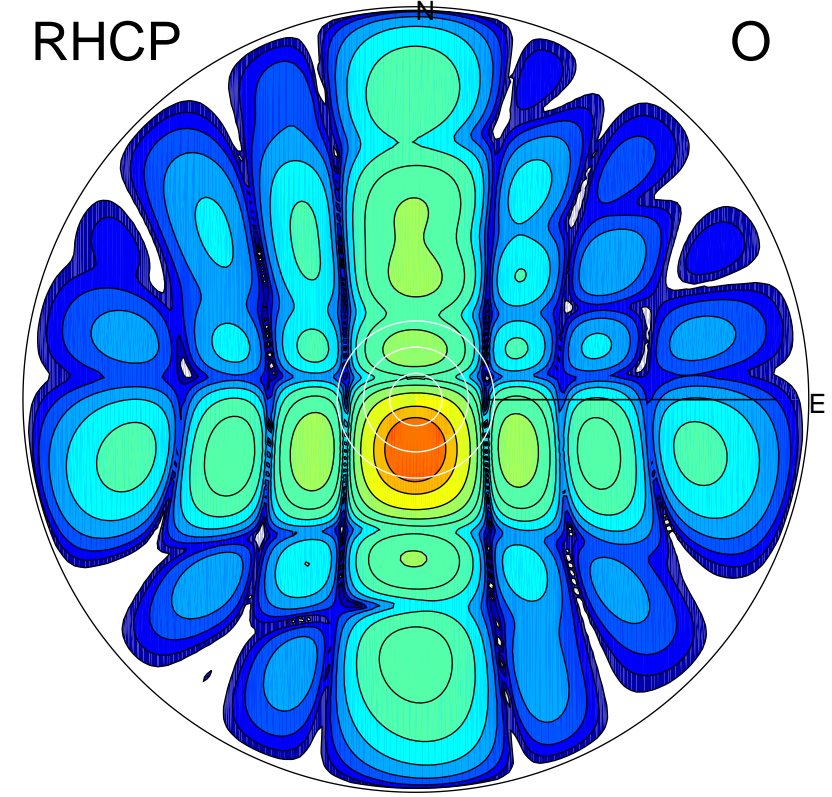
LHCP

X



RHCP

O



ERP 4.8 MW

Peak gain 8.2 dBi at Az 188 Zen 12
RHCP gain 21.7 dBi
N-S peak 8.0 dBi at Zen -11.7
N-S -3 dB beamwidth 12.1 deg.

ERP 110.1 MW

Peak gain 21.8 dBi at Az 180 Zen 11
LHCP gain 8.0 dBi
N-S peak 21.8 dBi at Zen -11.3
N-S -3 dB beamwidth 14.7 deg.