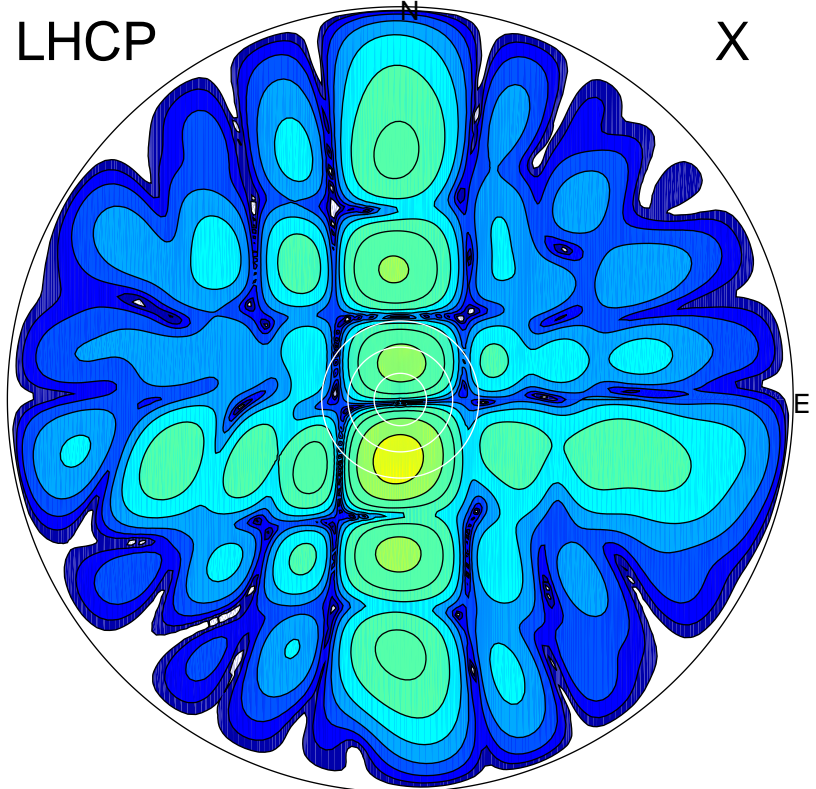


2016-03-03 16:47:02 A2 4.54400000 MHz 784.0 kW

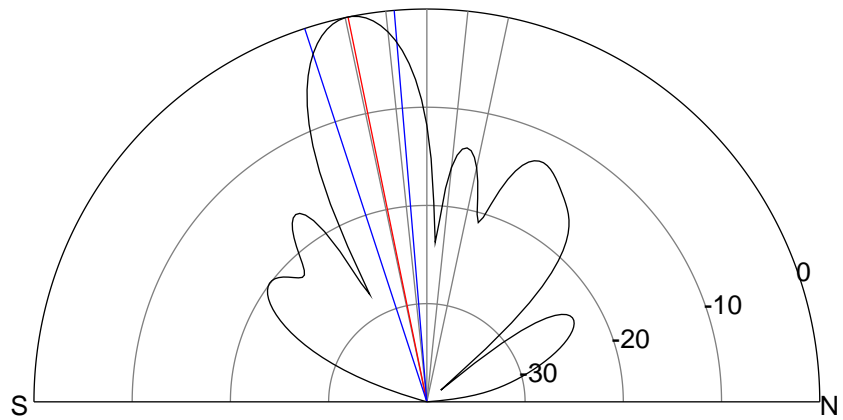
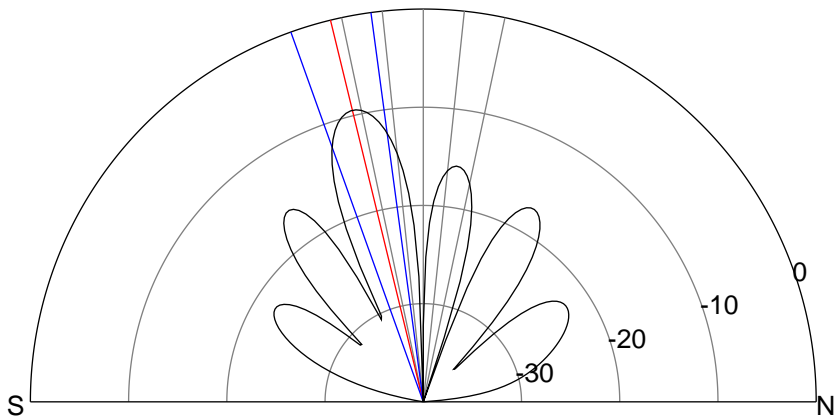
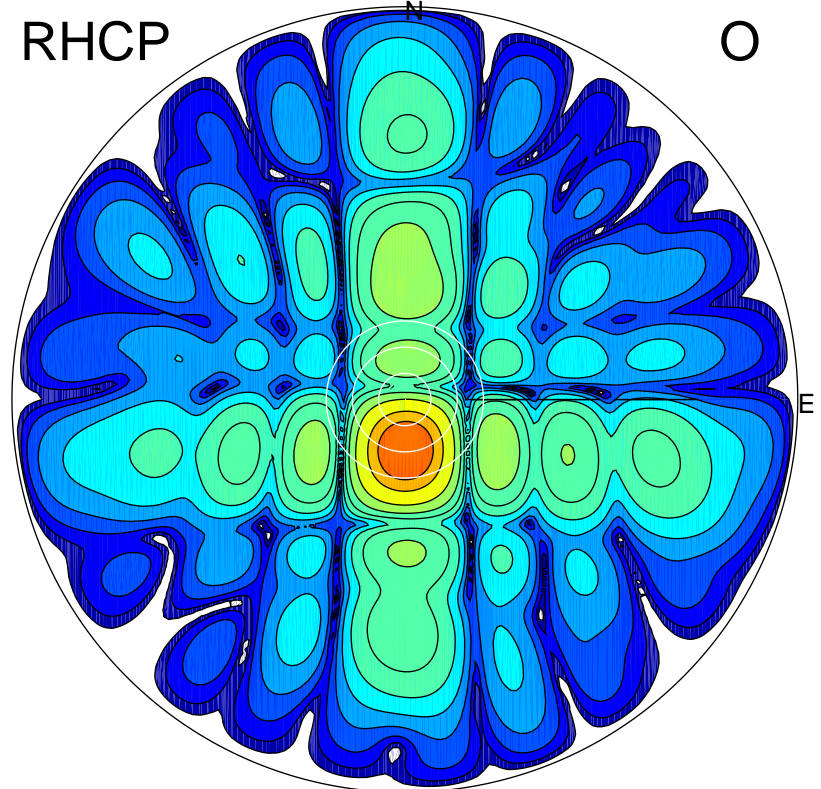
LHCP

X



RHCP

O



ERP 14.9 MW

Peak gain 12.8 dBi at Az 183 Zen 14
RHCP gain 21.8 dBi
N-S peak 12.8 dBi at Zen -13.7
N-S -3 dB beamwidth 12.0 deg.

ERP 130.6 MW

Peak gain 22.2 dBi at Az 178 Zen 12
LHCP gain 12.5 dBi
N-S peak 22.2 dBi at Zen -11.6
N-S -3 dB beamwidth 13.3 deg.