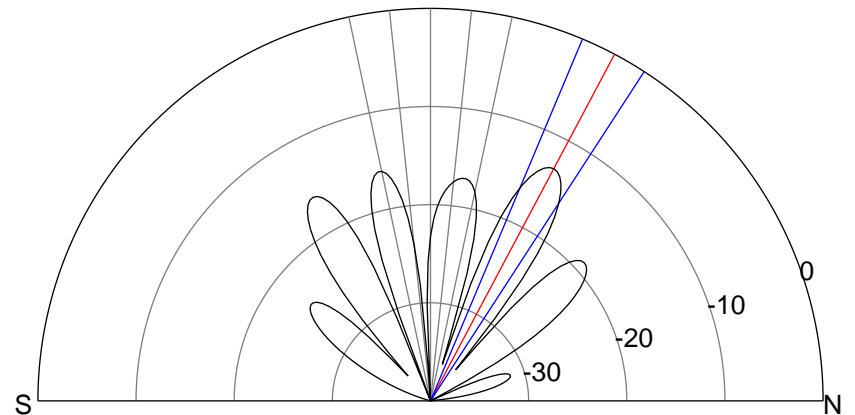
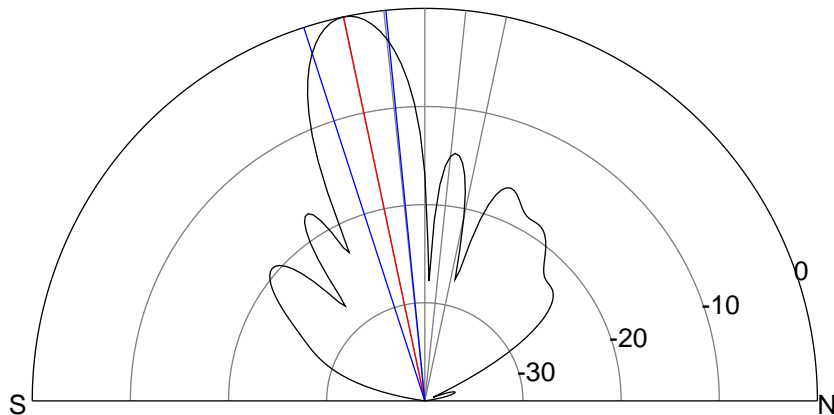
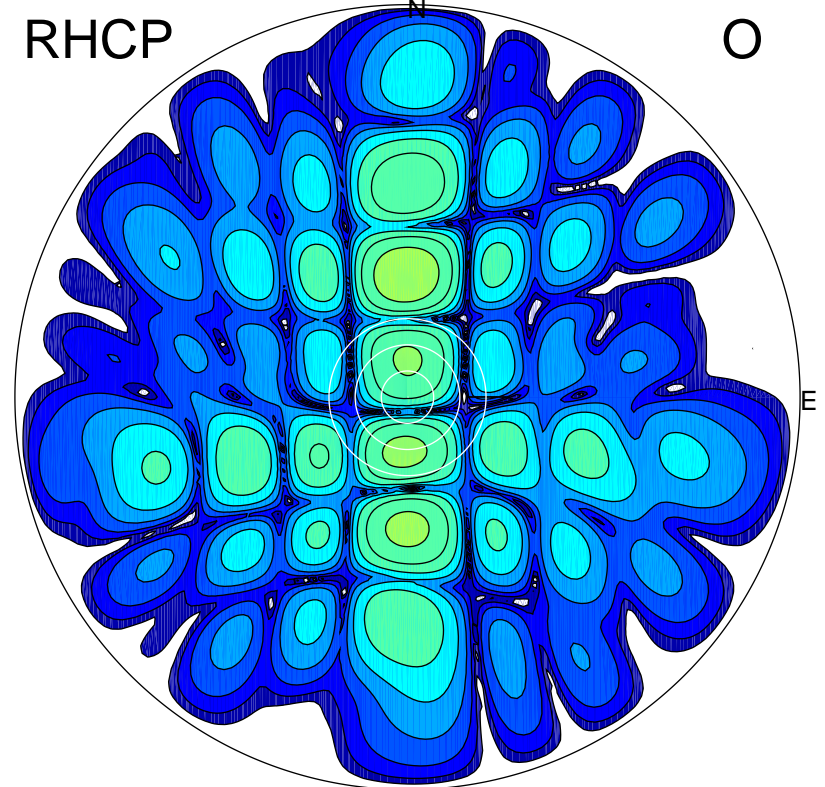
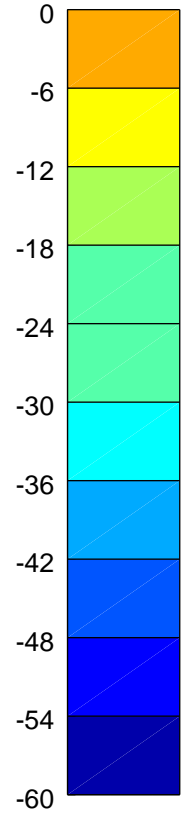
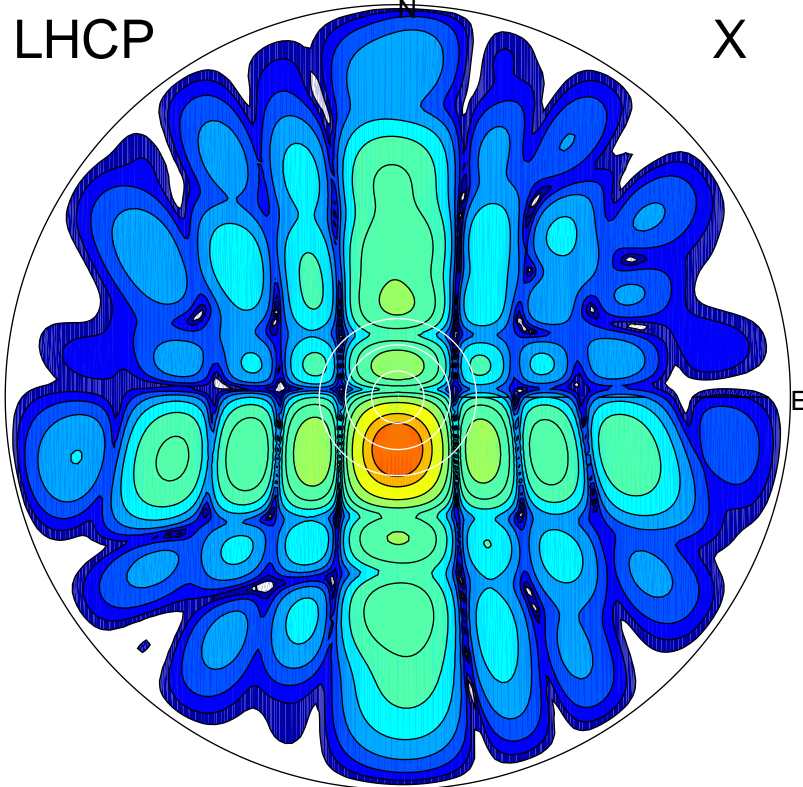


2016-03-03 16:36:00 A2 4.91280000 MHz 762.0 kW



ERP 162.7 MW

Peak gain 23.3 dBi at Az 180 Zen 12
RHCP gain 7.2 dBi
N-S peak 23.3 dBi at Zen -11.9
N-S -3 dB beamwidth 12.3 deg.

ERP 7.8 MW

Peak gain 10.1 dBi at Az 359 Zen 28
LHCP gain 5.0 dBi
N-S peak 10.1 dBi at Zen 28.0
N-S -3 dB beamwidth 10.2 deg.