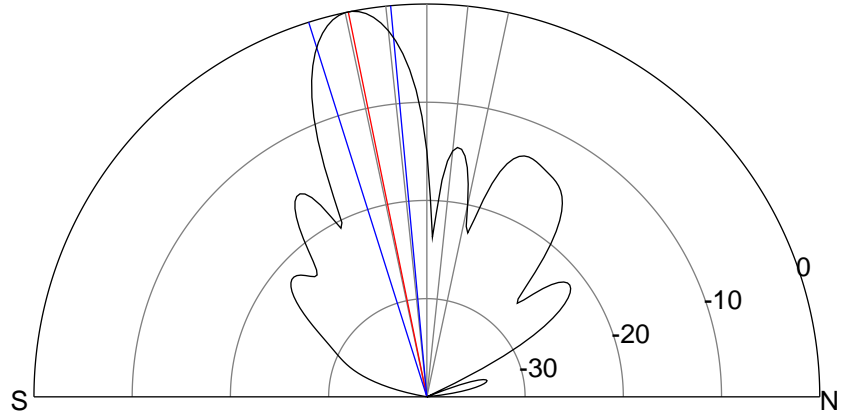
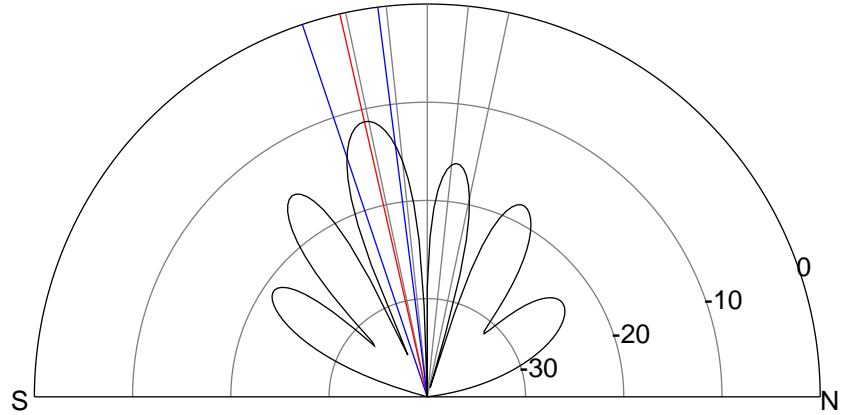
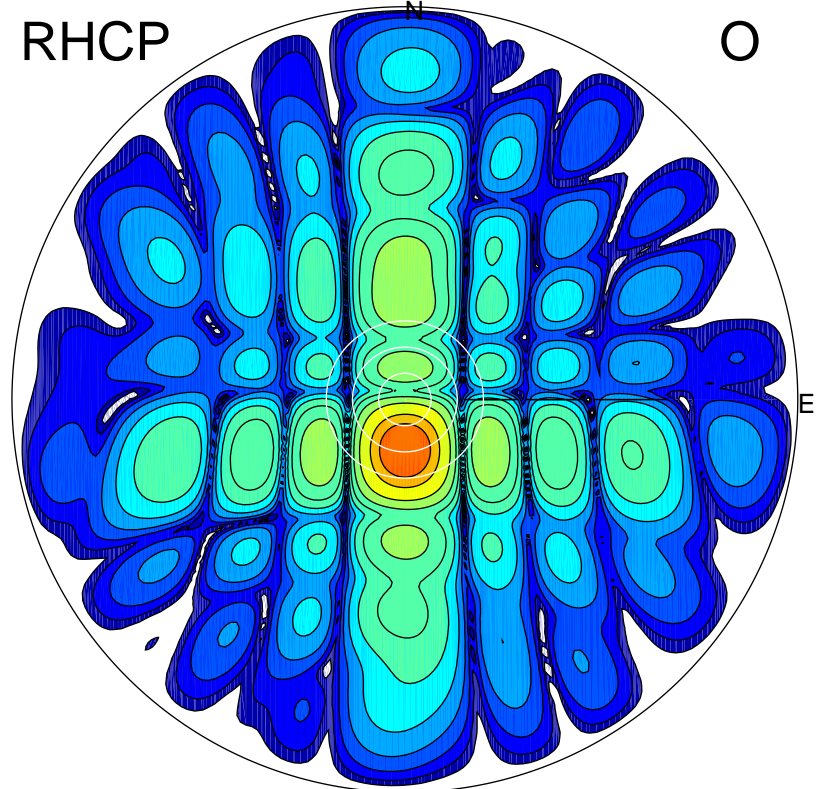
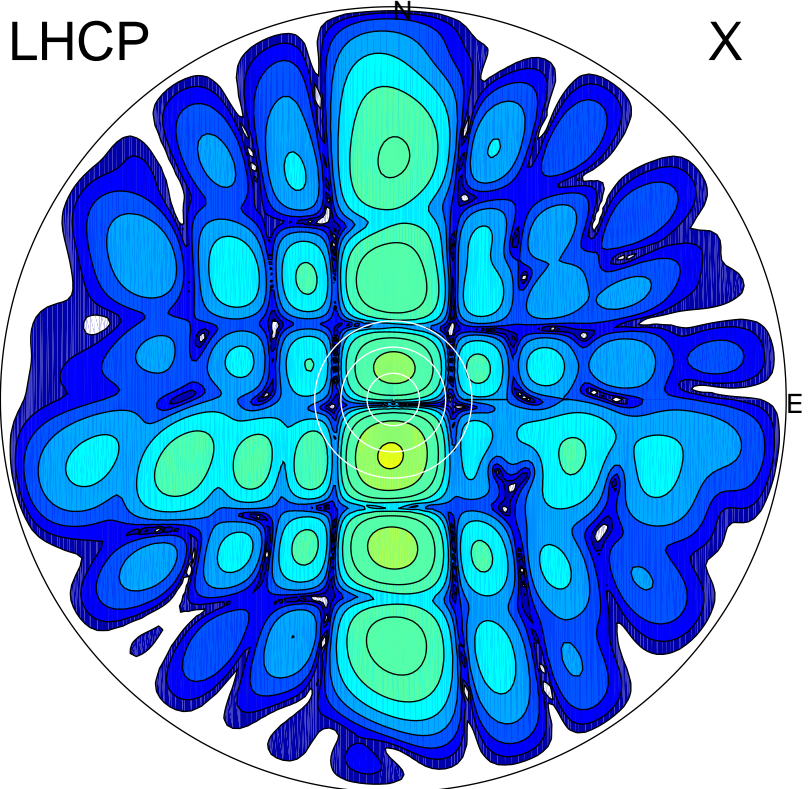


2016-03-03 16:32:02 A2 4.91280000 MHz 761.0 kW



ERP 11.6 MW

Peak gain 11.8 dBi at Az 183 Zen 13
RHCP gain 22.9 dBi
N-S peak 11.8 dBi at Zen -12.9
N-S -3 dB beamwidth 11.3 deg.

ERP 153.7 MW

Peak gain 23.1 dBi at Az 179 Zen 12
LHCP gain 11.7 dBi
N-S peak 23.1 dBi at Zen -11.5
N-S -3 dB beamwidth 12.2 deg.