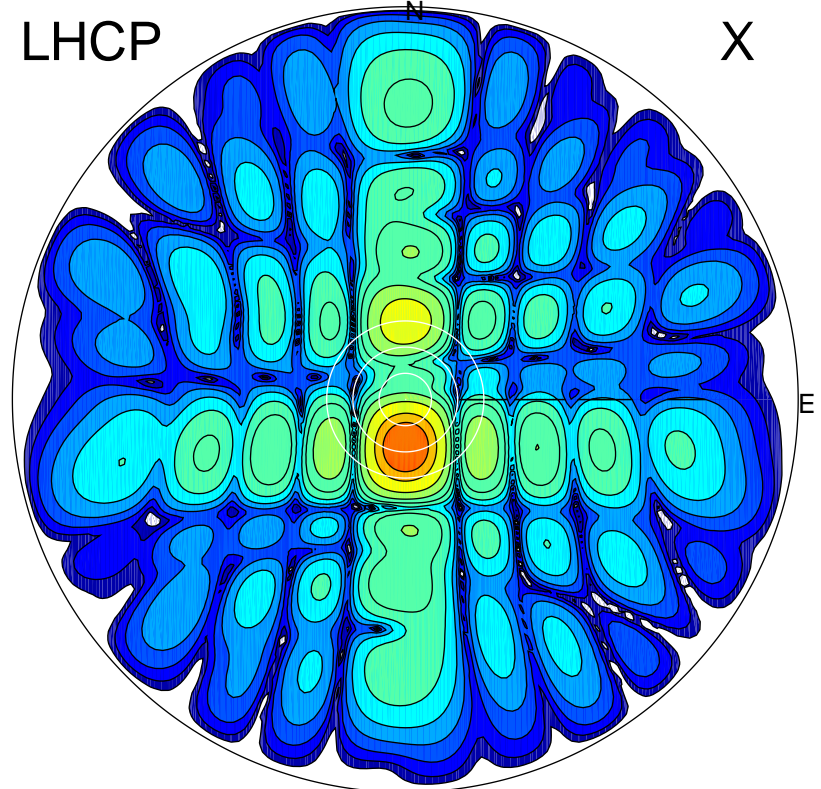


2016-03-03 14:05:00 A2 5.42300000 MHz 676.0 kW

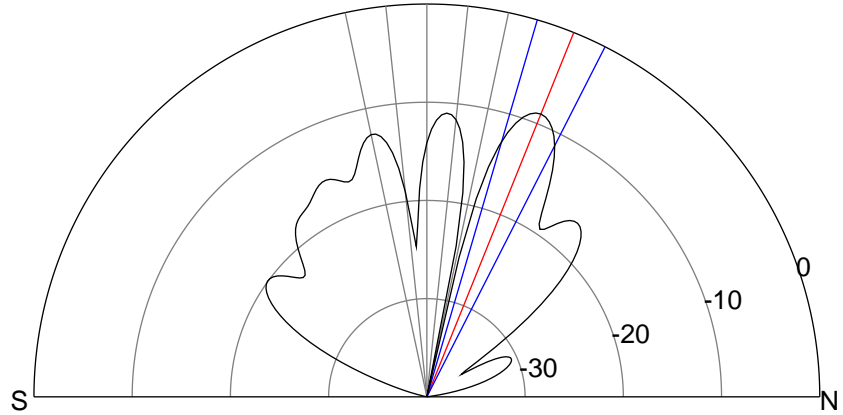
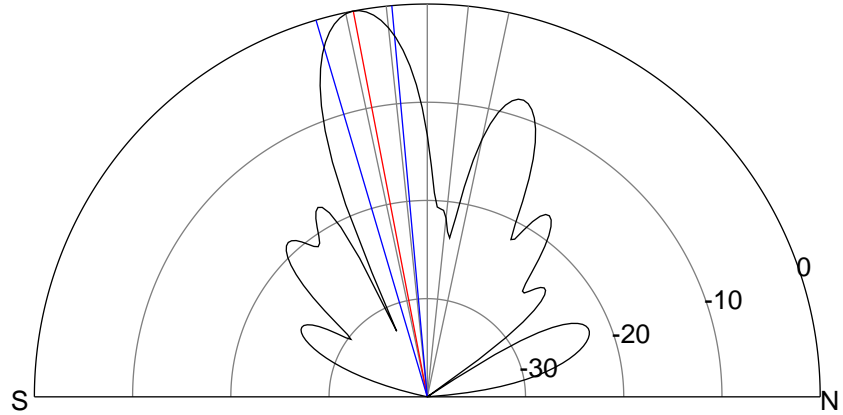
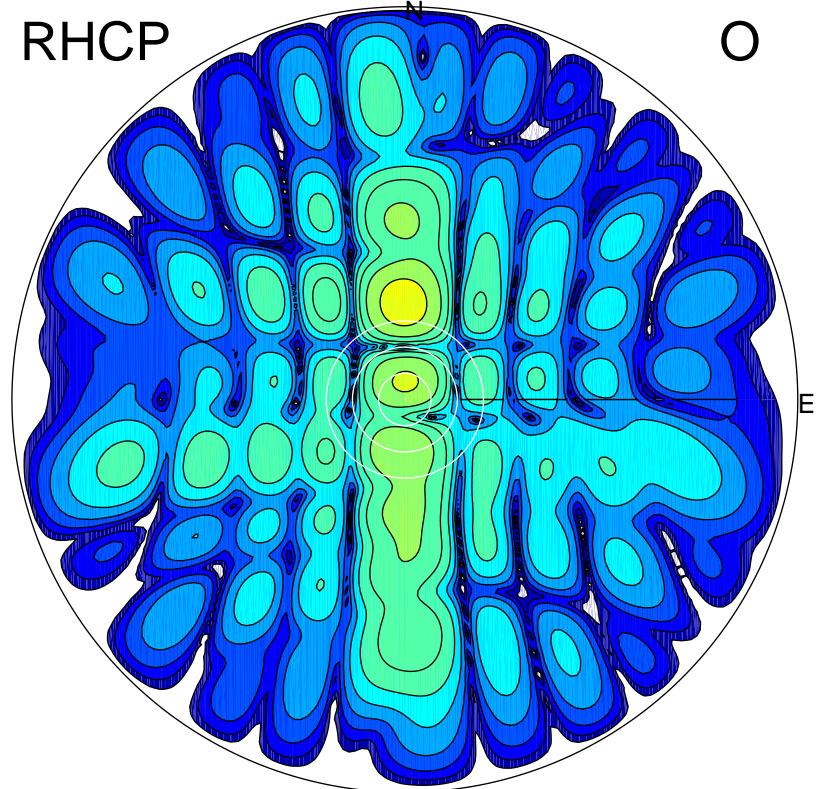
LHCP

X



RHCP

O



ERP 137.9 MW

Peak gain 23.1 dBi at Az 180 Zen 11
RHCP gain 10.4 dBi
N-S peak 23.1 dBi at Zen -10.9
N-S -3 dB beamwidth 11.3 deg.

ERP 17.6 MW

Peak gain 14.2 dBi at Az 359 Zen 22
LHCP gain 12.5 dBi
N-S peak 14.1 dBi at Zen 22.0
N-S -3 dB beamwidth 10.6 deg.