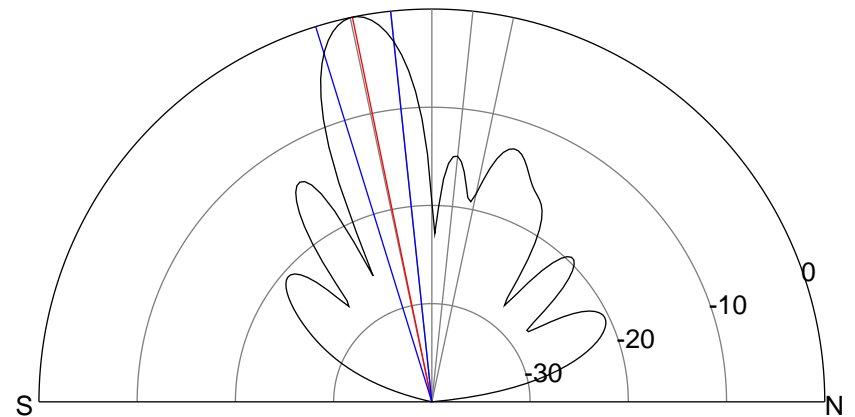
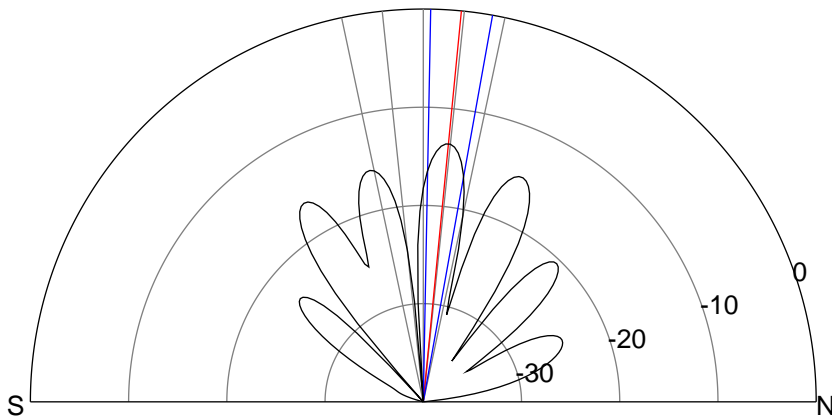
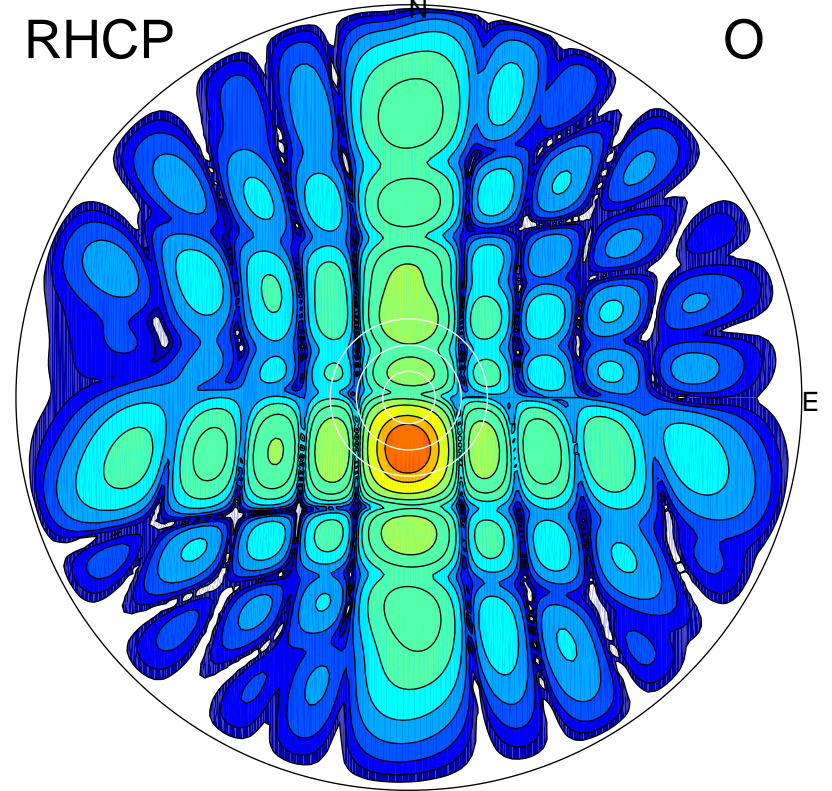
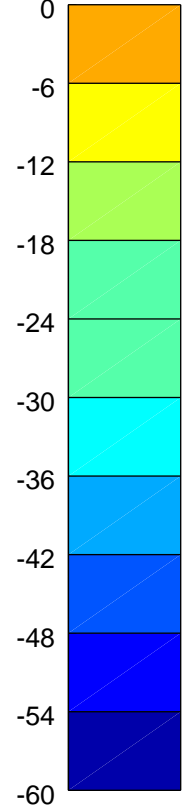
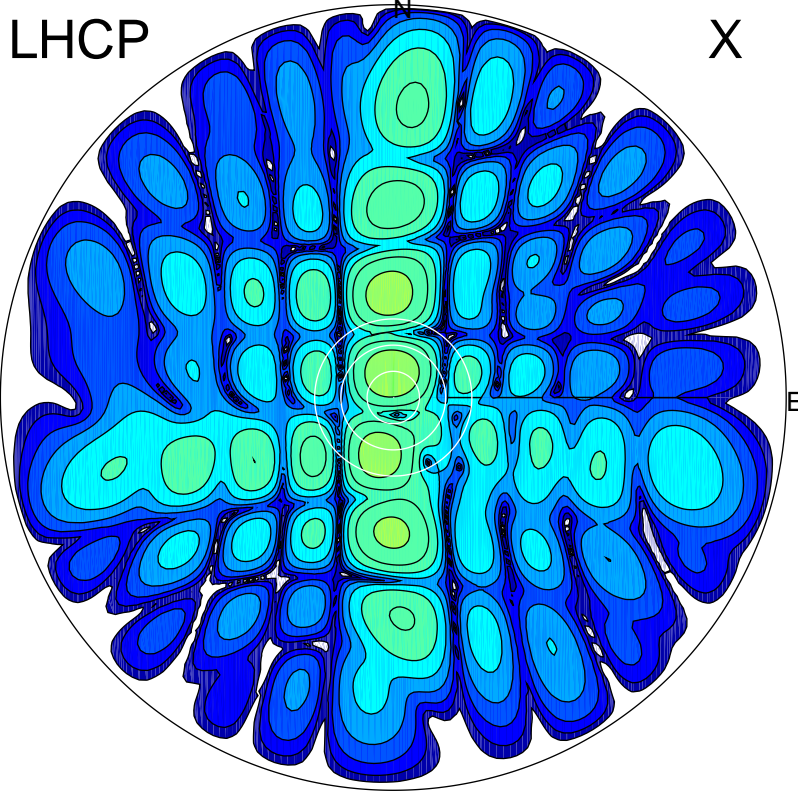


2016-03-03 13:46:02 A2 5.42300000 MHz 745.0 kW



ERP 7.8 MW

Peak gain 10.2 dBi at Az 357 Zen 6
RHCP gain 8.9 dBi
N-S peak 10.2 dBi at Zen 5.6
N-S -3 dB beamwidth 9.1 deg.

ERP 179.9 MW

Peak gain 23.8 dBi at Az 181 Zen 12
LHCP gain 8.1 dBi
N-S peak 23.8 dBi at Zen -11.7
N-S -3 dB beamwidth 11.2 deg.