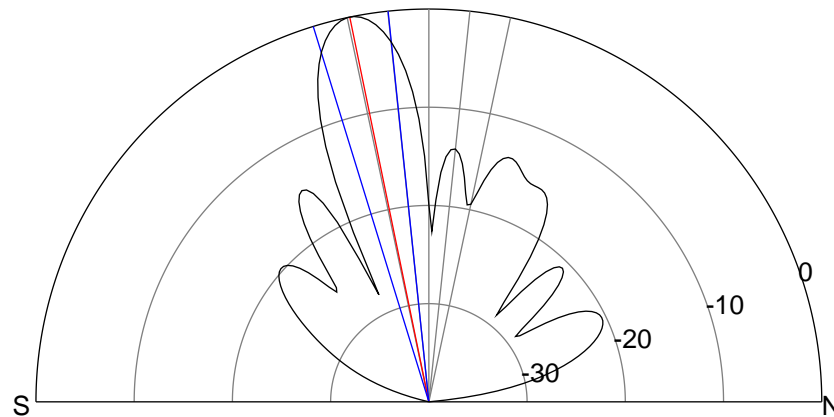
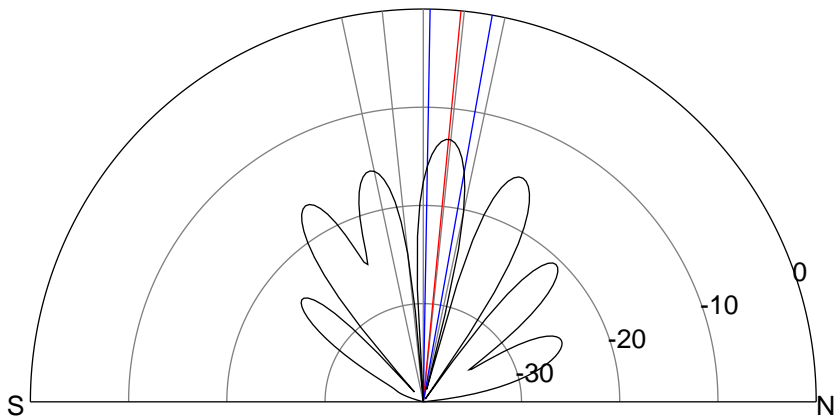
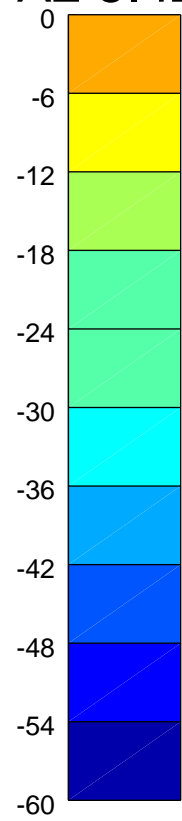
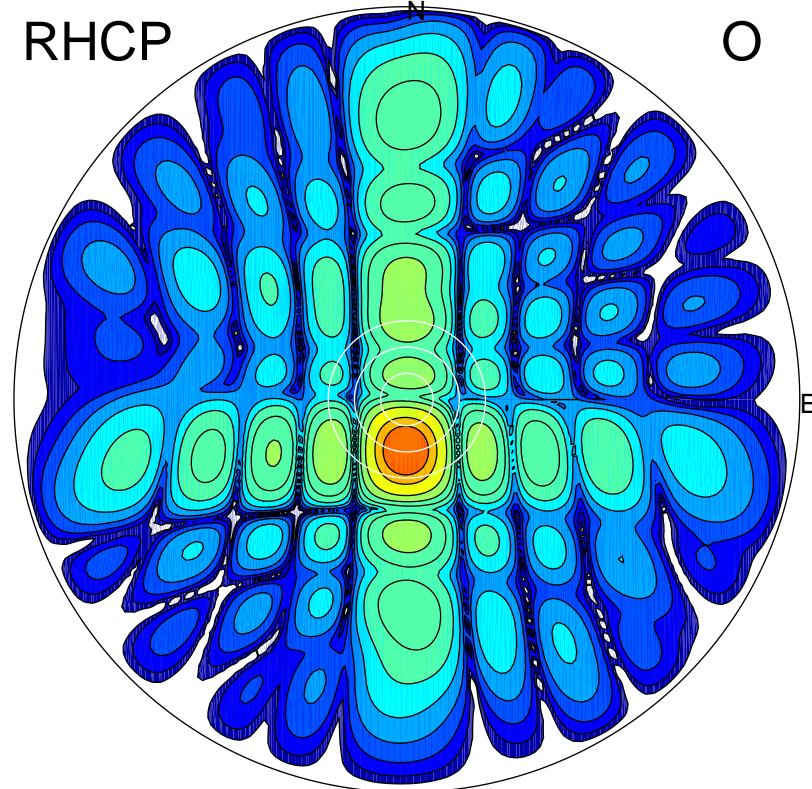
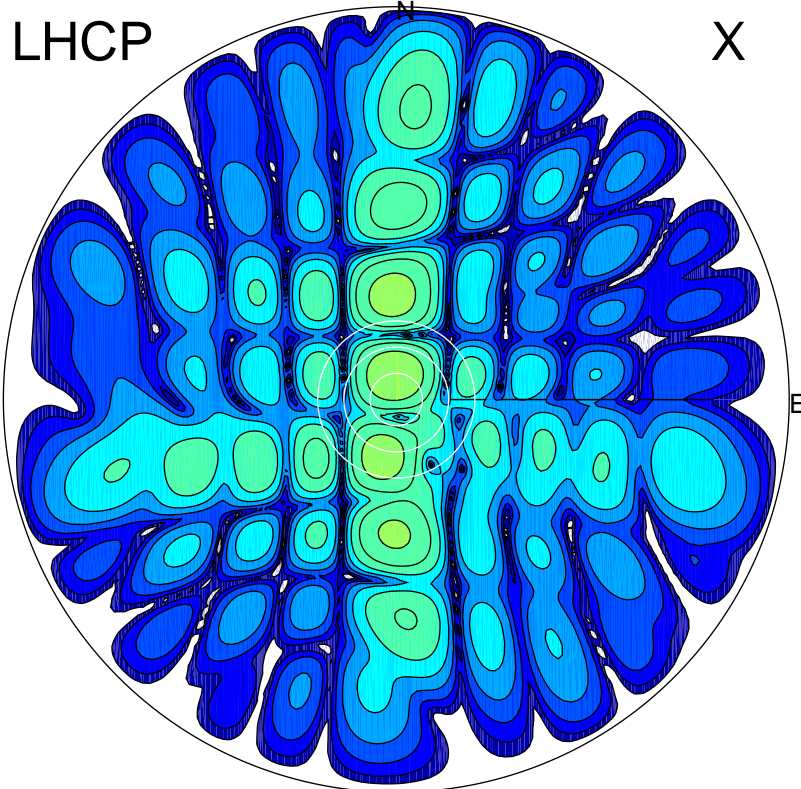


2016-03-03 11:29:02 A2 5.42300000 MHz 753.0 kW



ERP 8.8 MW

Peak gain 10.7 dBi at Az 358 Zen 5
RHCP gain 9.6 dBi
N-S peak 10.7 dBi at Zen 5.5
N-S -3 dB beamwidth 9.1 deg.

ERP 182.7 MW

Peak gain 23.8 dBi at Az 181 Zen 12
LHCP gain 8.0 dBi
N-S peak 23.9 dBi at Zen -11.6
N-S -3 dB beamwidth 11.2 deg.