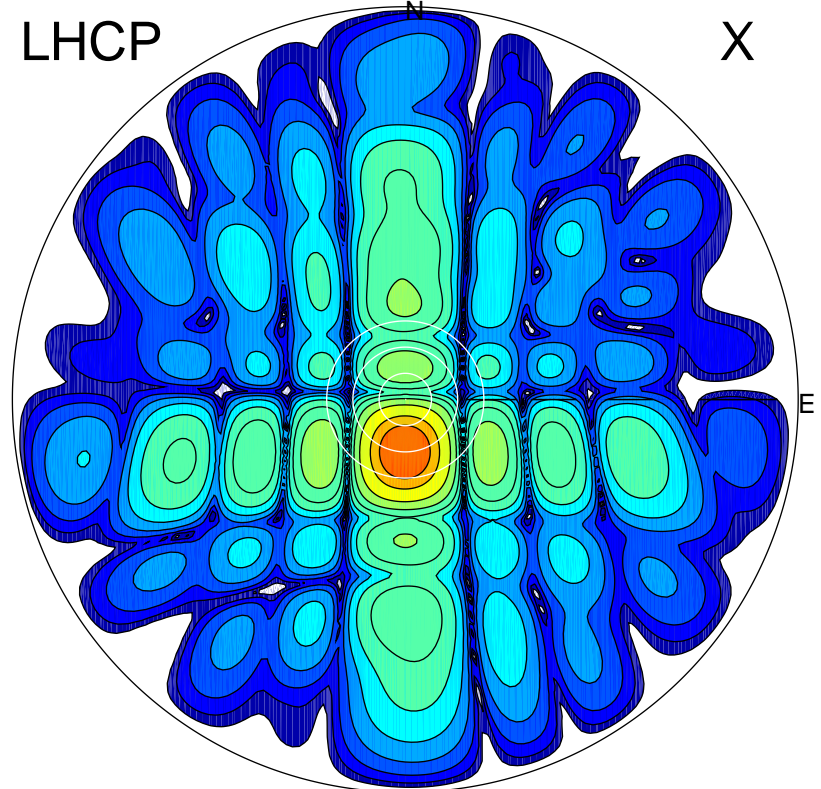


2016-03-02 15:36:00 A2 4.91280000 MHz 779.0 kW

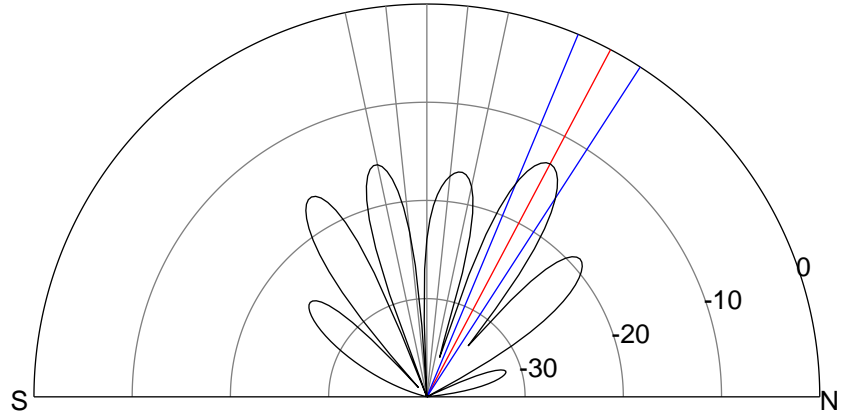
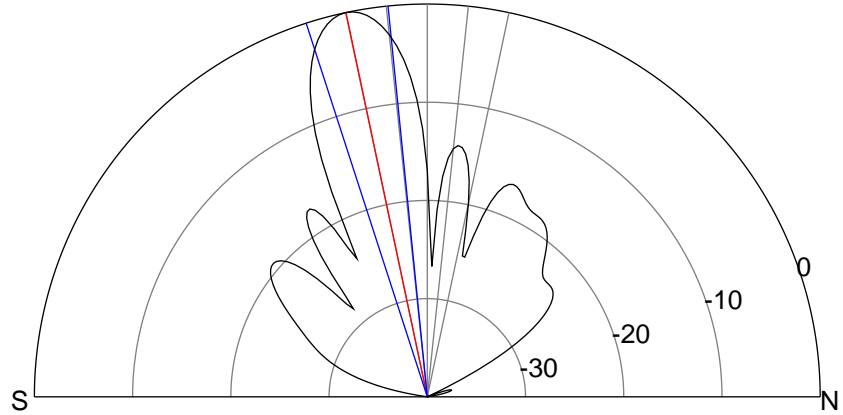
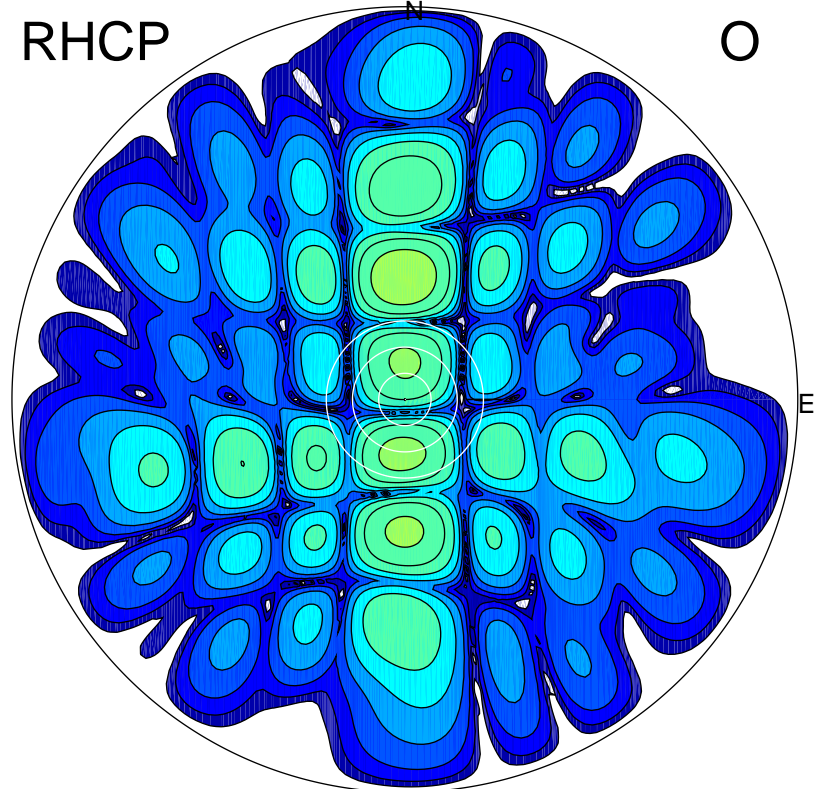
LHCP

X



RHCP

O



### ERP 166.5 MW

Peak gain 23.3 dBi at Az 180 Zen 12  
RHCP gain 7.5 dBi  
N-S peak 23.3 dBi at Zen -11.9  
N-S -3 dB beamwidth 12.2 deg.

### ERP 8.1 MW

Peak gain 10.2 dBi at Az 359 Zen 28  
LHCP gain 5.2 dBi  
N-S peak 10.1 dBi at Zen 27.9  
N-S -3 dB beamwidth 10.2 deg.