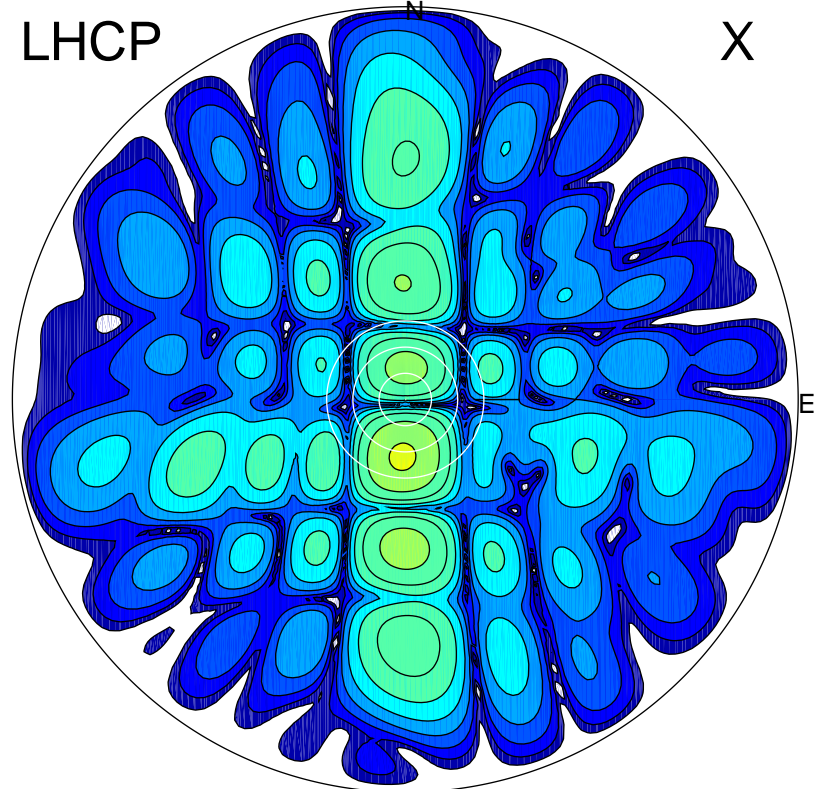


2016-03-02 15:32:02 A2 4.91280000 MHz 775.0 kW

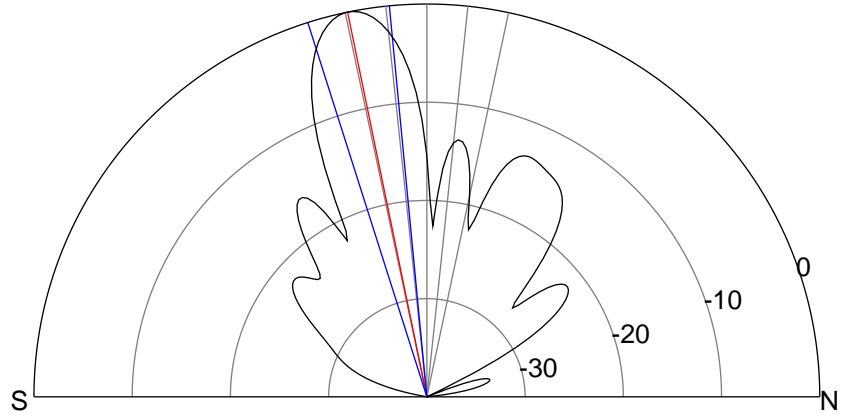
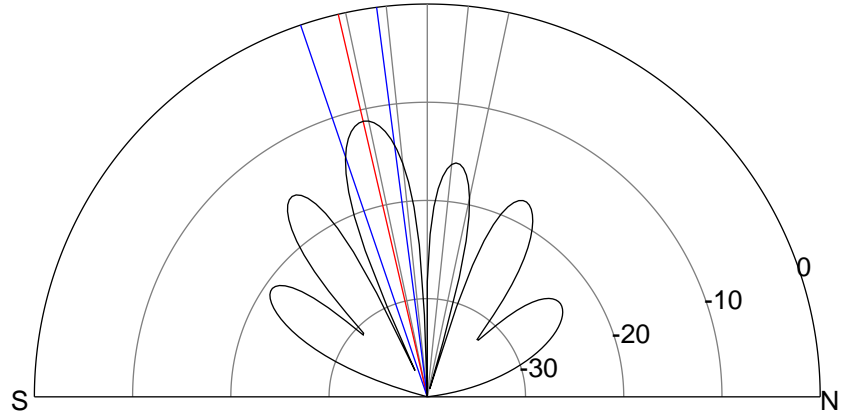
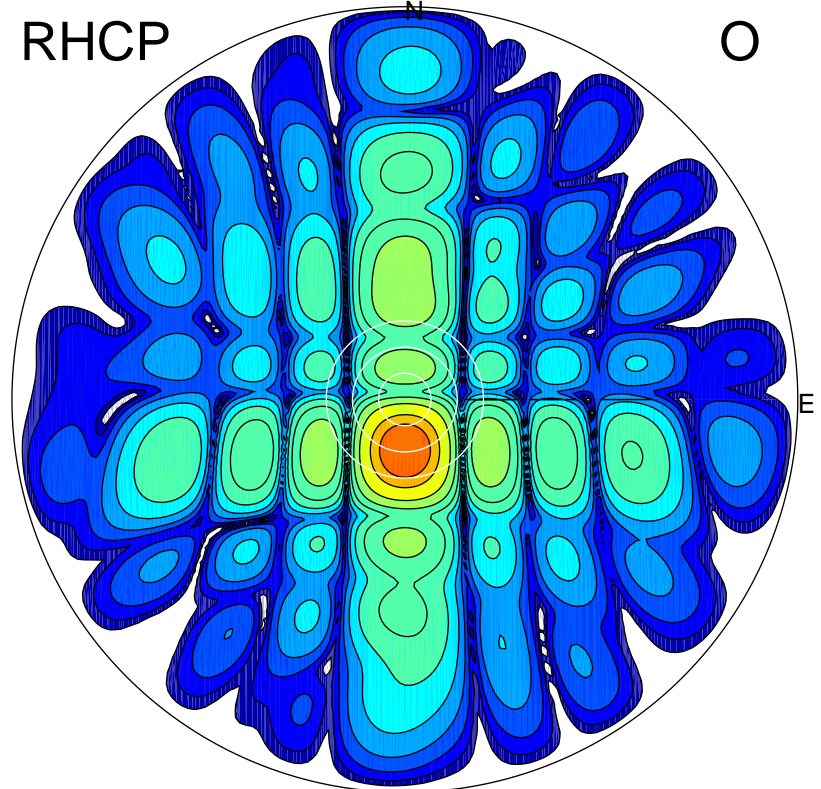
LHCP

X



RHCP

O



ERP 12.0 MW

Peak gain 11.9 dBi at Az 184 Zen 13
RHCP gain 22.9 dBi
N-S peak 11.9 dBi at Zen -13.1
N-S -3 dB beamwidth 11.4 deg.

ERP 156.7 MW

Peak gain 23.1 dBi at Az 180 Zen 12
LHCP gain 11.8 dBi
N-S peak 23.1 dBi at Zen -11.6
N-S -3 dB beamwidth 12.2 deg.