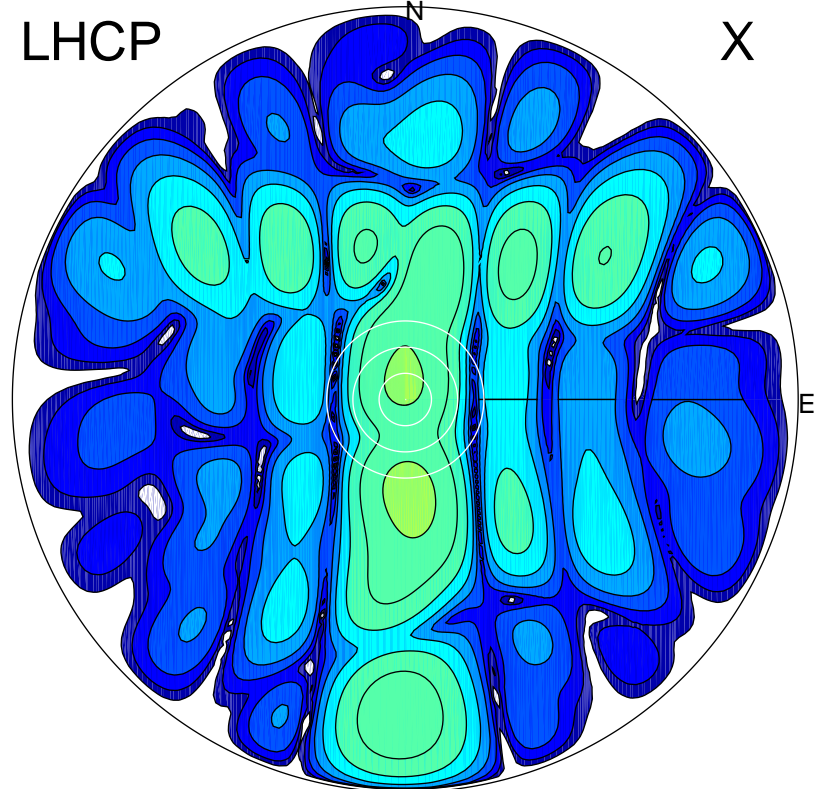


2016-01-20 09:01:02 A2 4.04000000 MHz 819.0 kW

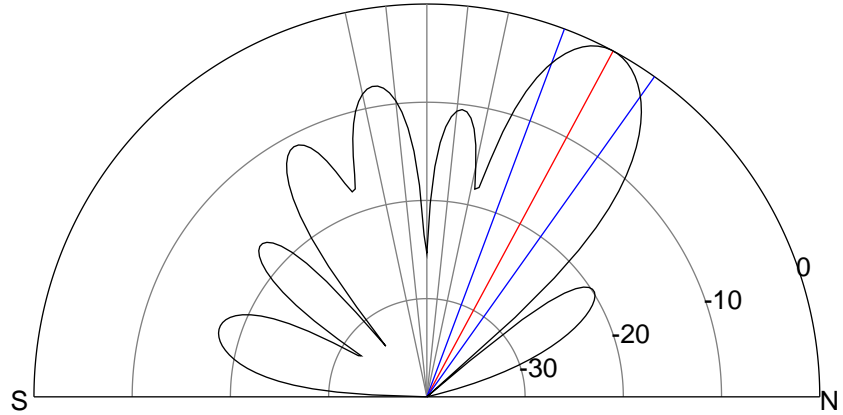
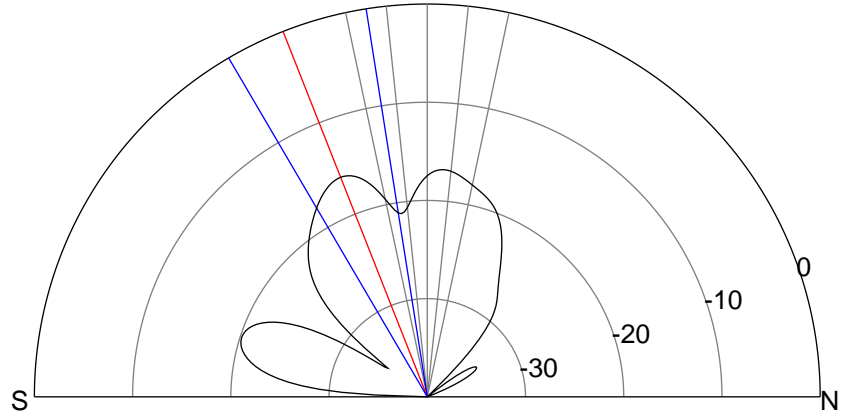
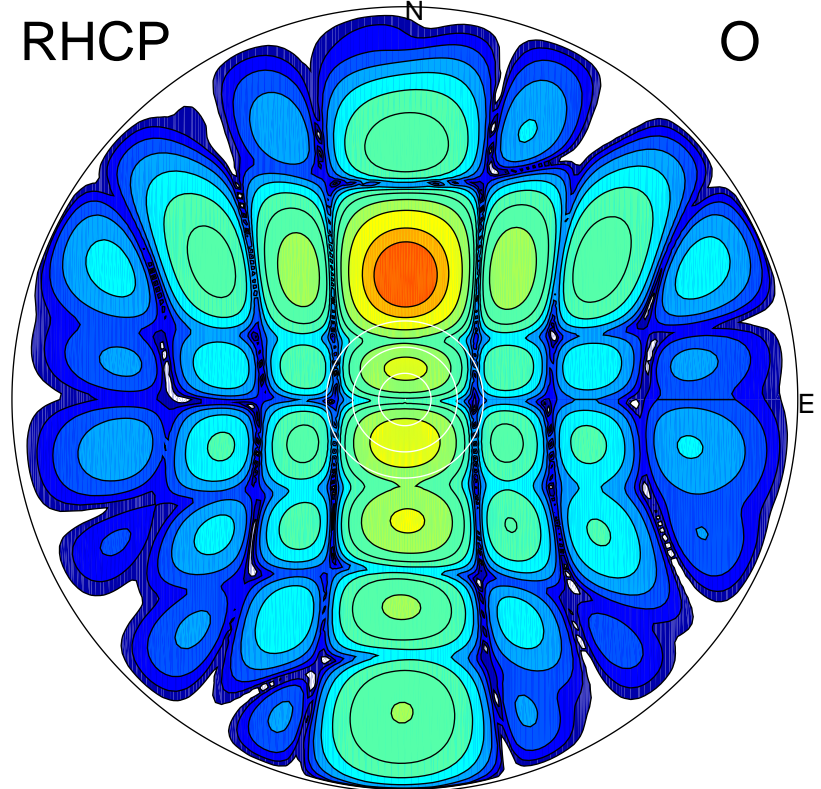
LHCP

X



RHCP

O



ERP 2.8 MW

Peak gain 5.3 dBi at Az 178 Zen 22
RHCP gain 6.0 dBi
N-S peak 5.2 dBi at Zen -21.5
N-S -3 dB beamwidth 21.4 deg.

ERP 108.0 MW

Peak gain 21.2 dBi at Az 0 Zen 28
LHCP gain -2.8 dBi
N-S peak 21.2 dBi at Zen 28.3
N-S -3 dB beamwidth 14.9 deg.