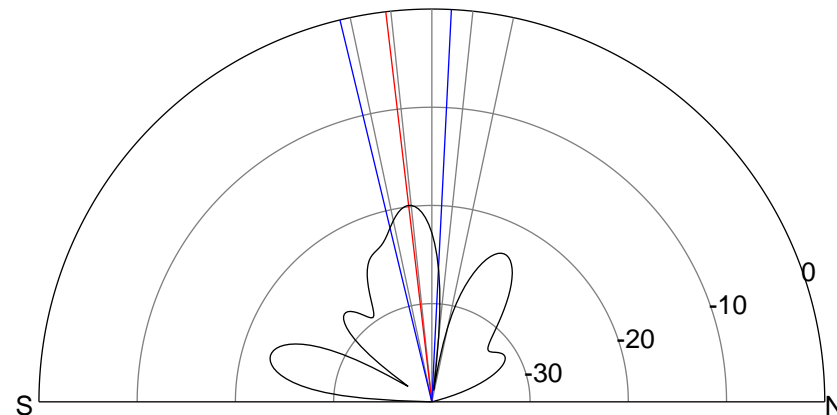
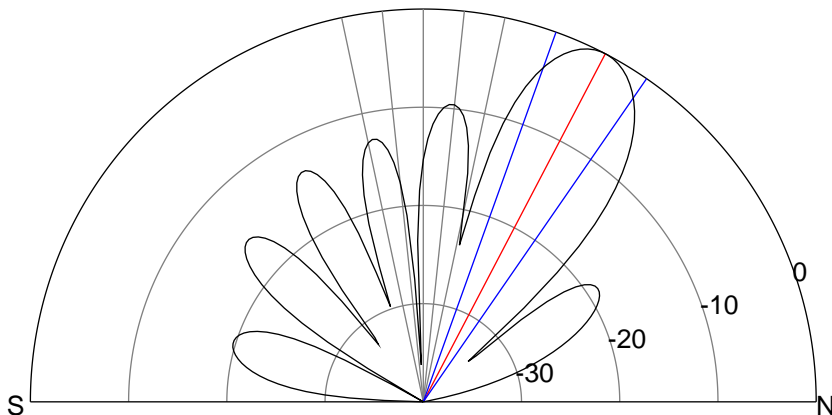
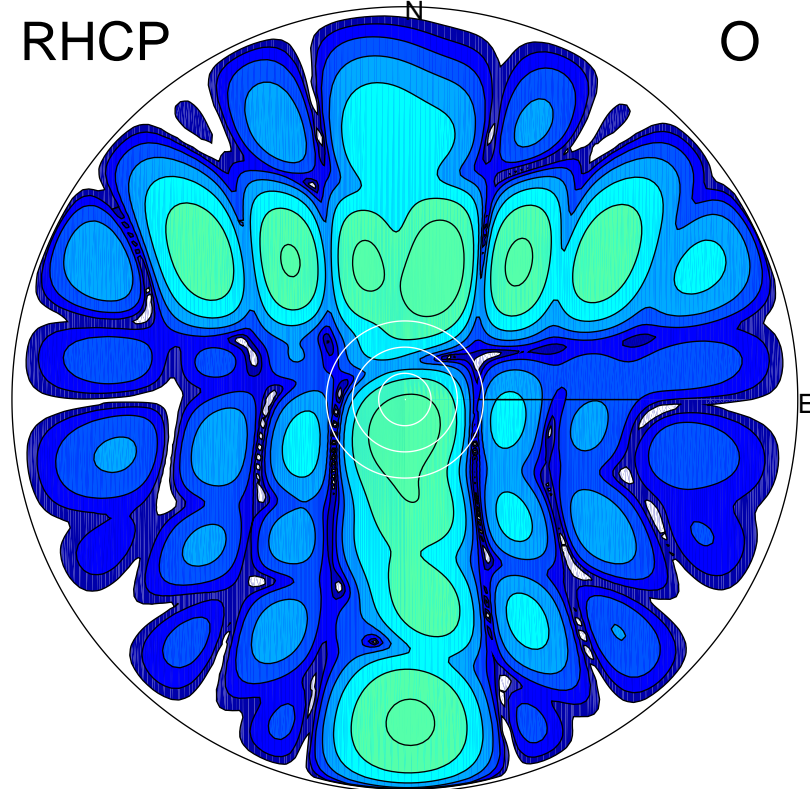
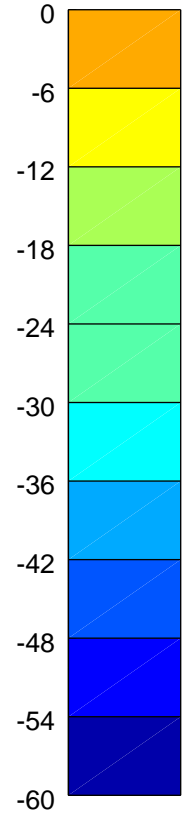
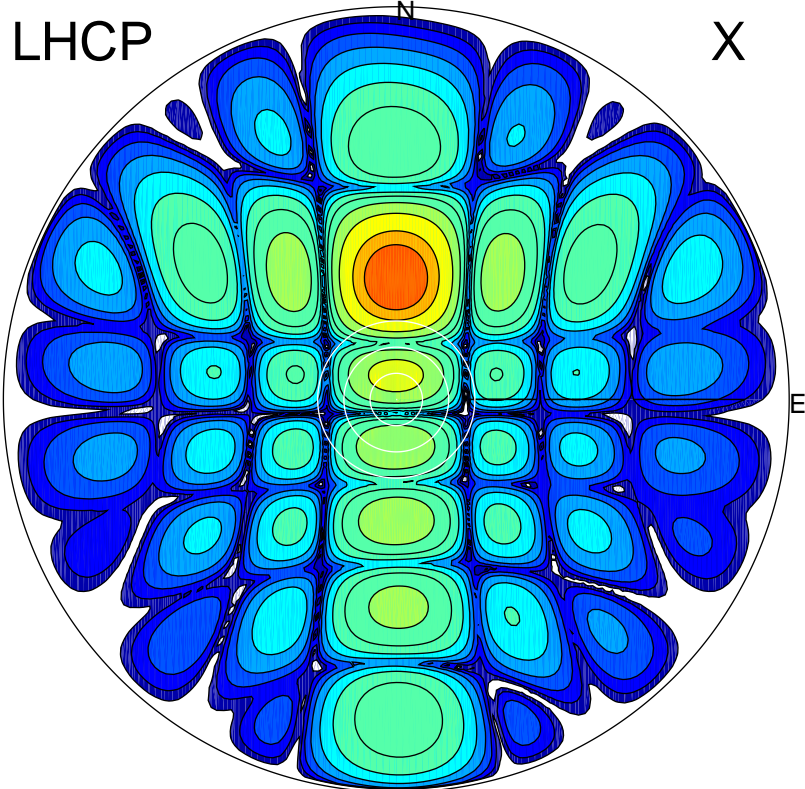


2016-01-18 13:29:22 A2 4.04000000 MHz 855.0 kW



### ERP 126.1 MW

Peak gain 21.7 dBi at Az 0 Zen 28  
RHCP gain -1.7 dBi  
N-S peak 21.7 dBi at Zen 27.6  
N-S -3 dB beamwidth 14.9 deg.

### ERP 1.6 MW

Peak gain 2.6 dBi at Az 13 Zen 31  
LHCP gain 18.6 dBi  
N-S peak 1.8 dBi at Zen -6.7  
N-S -3 dB beamwidth 16.4 deg.