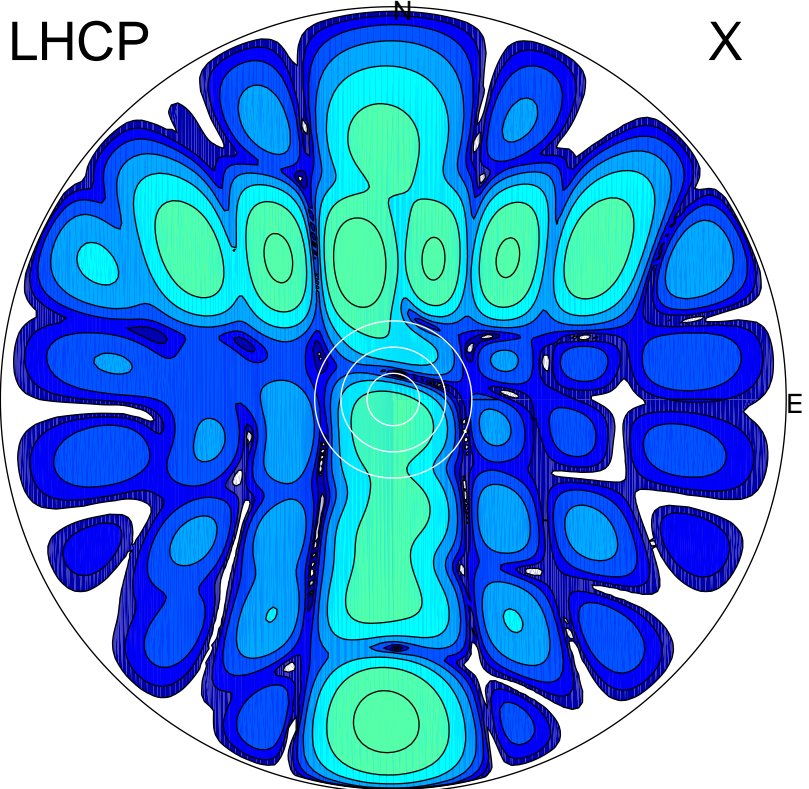


2016-01-18 13:01:15 A2 4.04000000 MHz 852.0 kW

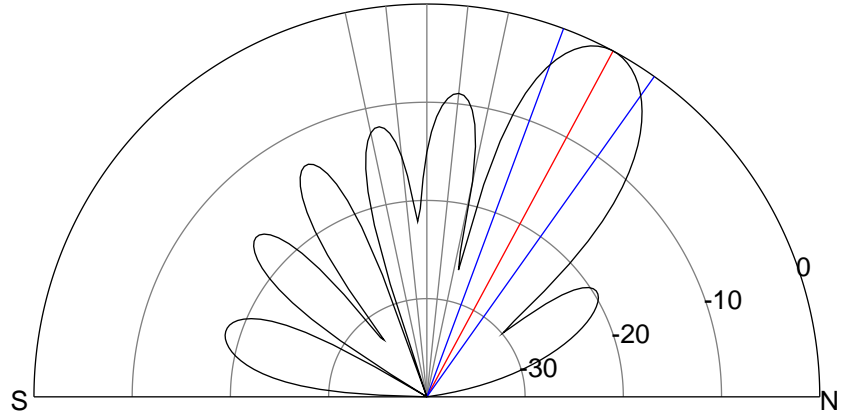
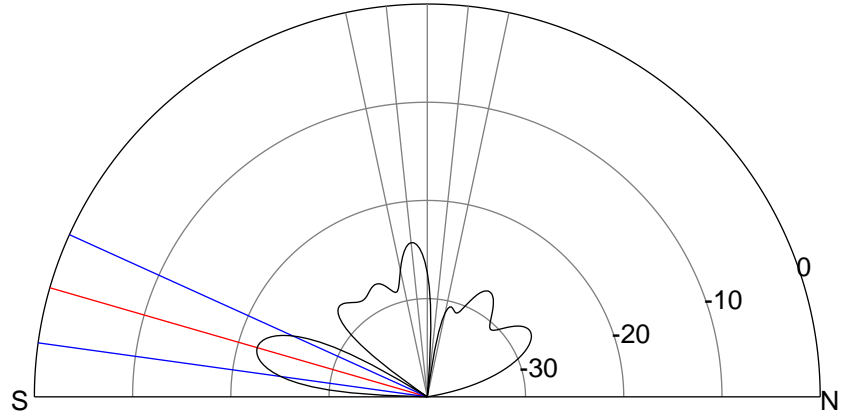
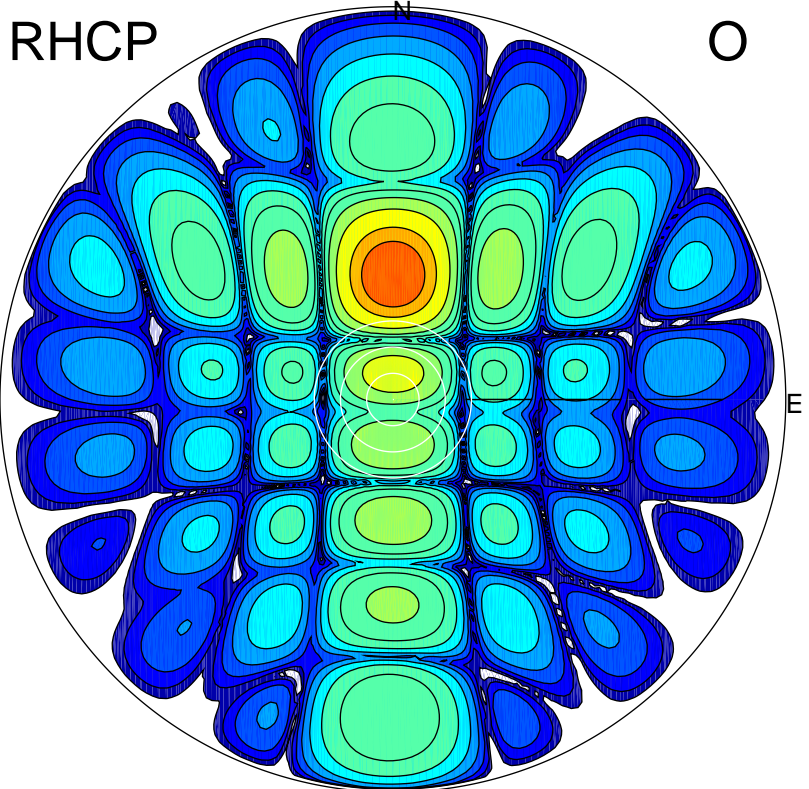
LHCP

X



RHCP

O



ERP 1.5 MW

Peak gain 2.4 dBi at Az 346 Zen 32
RHCP gain 17.8 dBi
N-S peak -0.3 dBi at Zen -73.9
N-S -3 dB beamwidth 16.5 deg.

ERP 124.0 MW

Peak gain 21.6 dBi at Az 0 Zen 28
LHCP gain -6.2 dBi
N-S peak 21.6 dBi at Zen 28.3
N-S -3 dB beamwidth 15.0 deg.