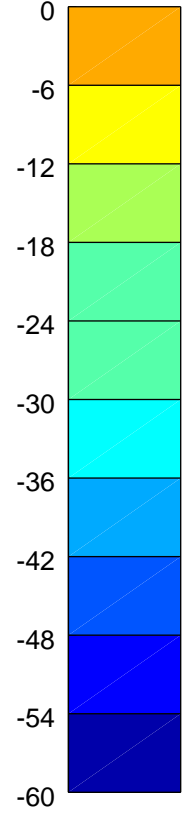
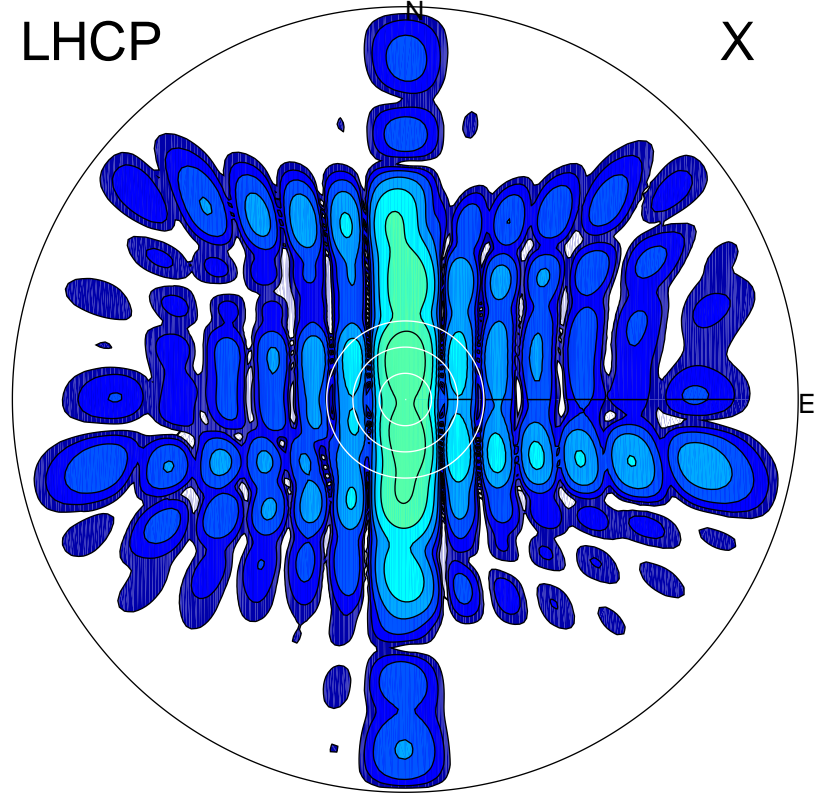


2015-12-04 12:35:02 A1 5.42300000 MHz 788.0 kW

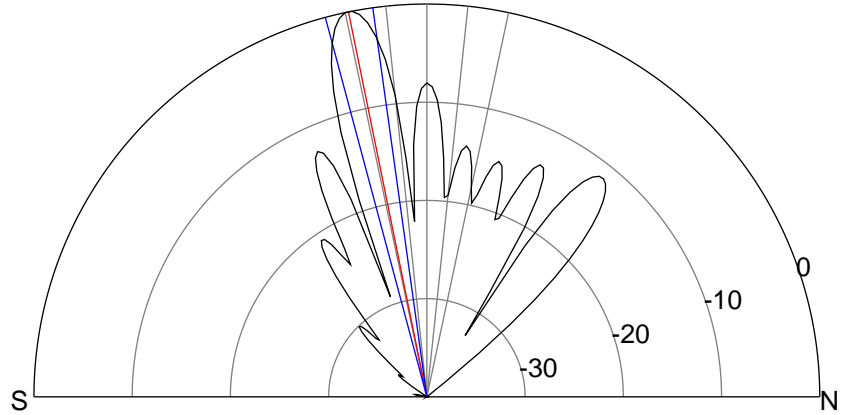
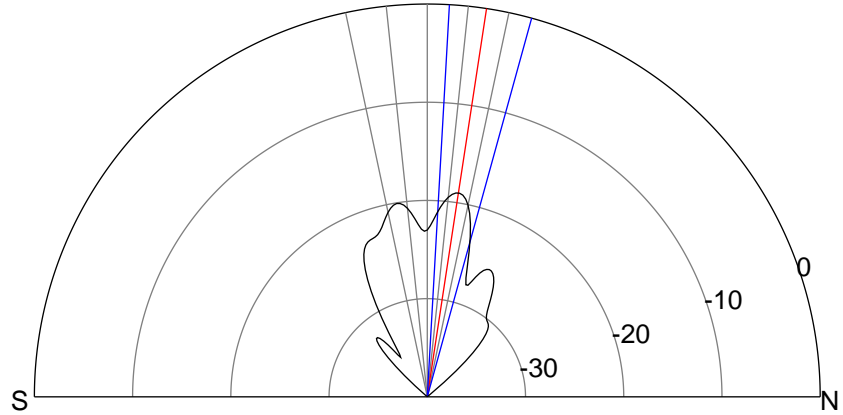
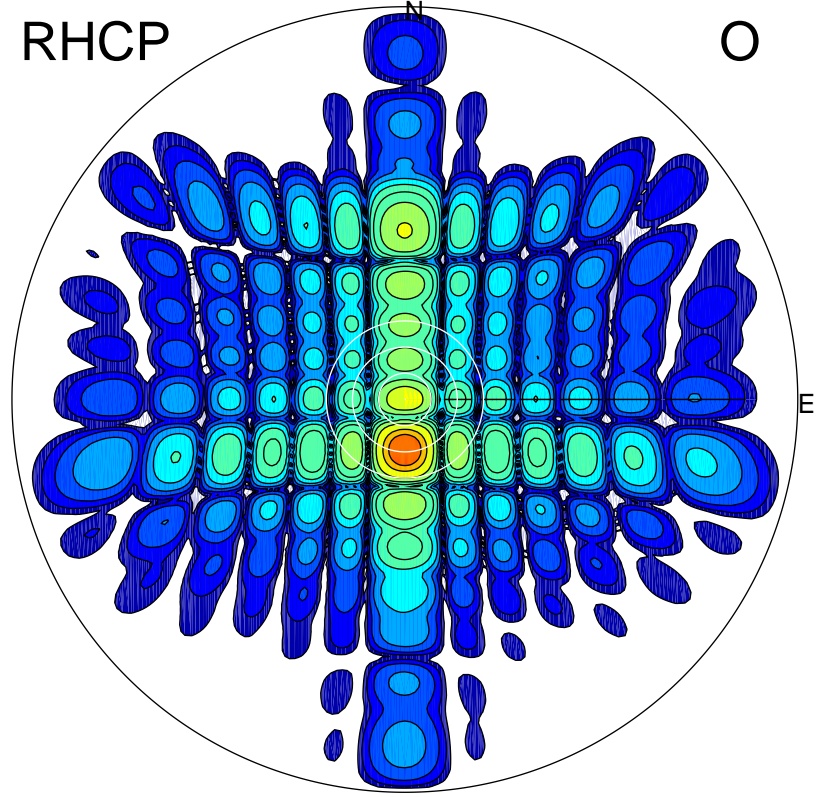
LHCP

X



RHCP

O



ERP 5.0 MW

Peak gain 8.0 dBi at Az 359 Zen 9
RHCP gain 12.9 dBi
N-S peak 8.1 dBi at Zen 8.7
N-S -3 dB beamwidth 12.2 deg.

ERP 399.7 MW

Peak gain 27.1 dBi at Az 180 Zen 12
LHCP gain 6.3 dBi
N-S peak 27.1 dBi at Zen -11.5
N-S -3 dB beamwidth 7.1 deg.