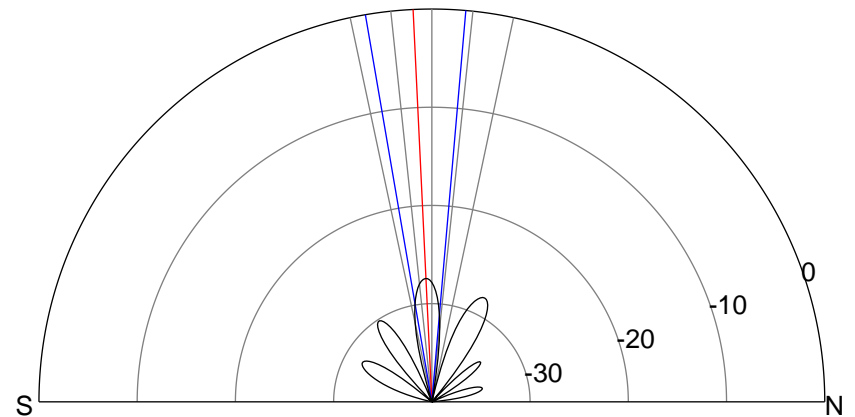
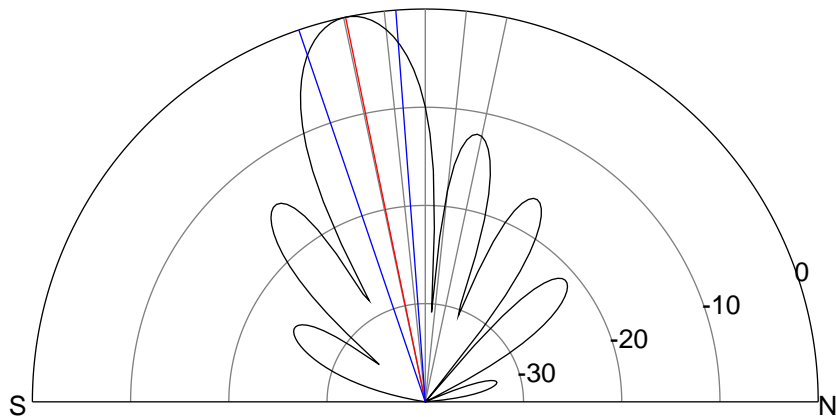
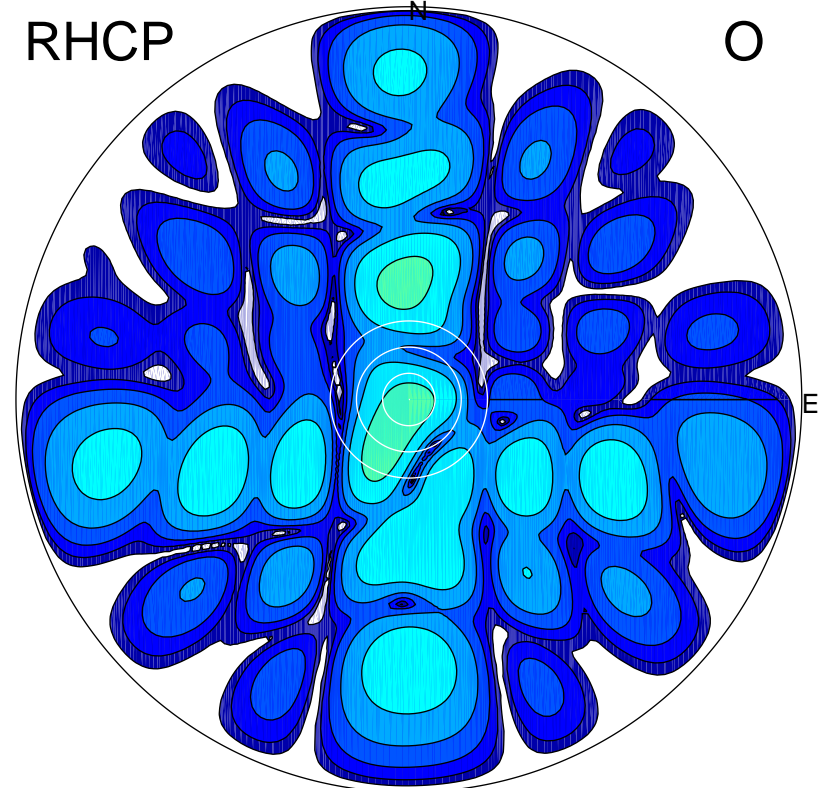
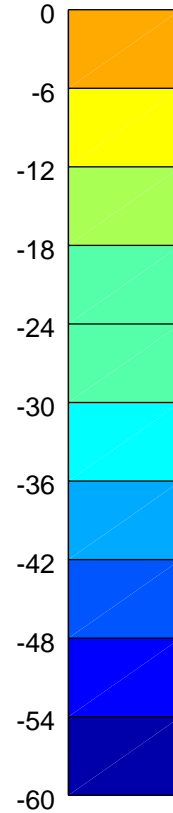
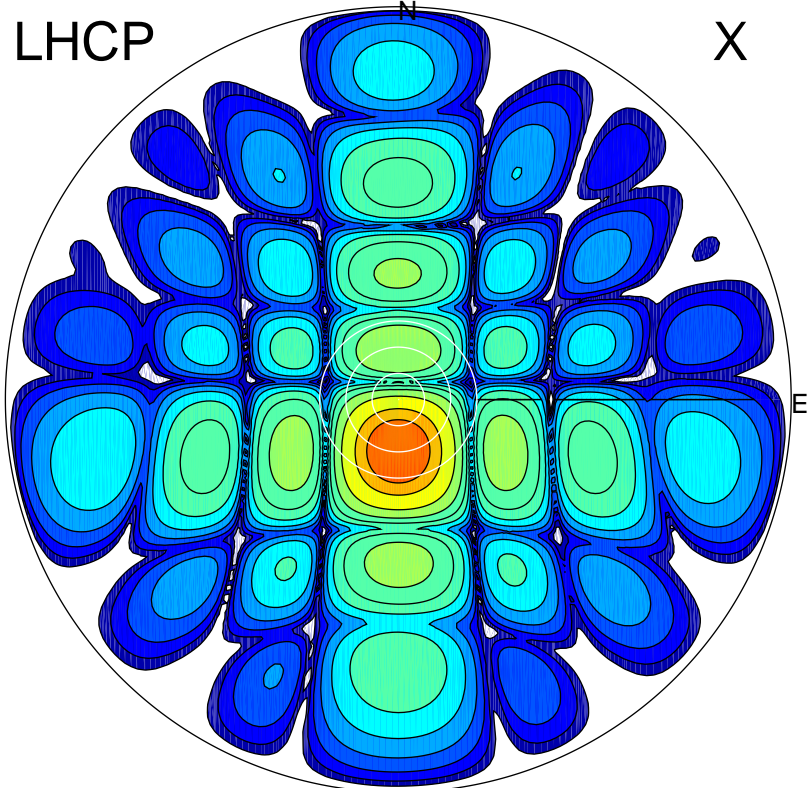


2015-12-02 14:36:00 A2 3.90000000 MHz 831.0 kW



### ERP 134.9 MW

Peak gain 22.1 dBi at Az 179 Zen 12  
RHCP gain -10.1 dBi  
N-S peak 22.1 dBi at Zen -11.7  
N-S -3 dB beamwidth 14.5 deg.

### ERP 0.3 MW

Peak gain -5.0 dBi at Az 207 Zen 9  
LHCP gain 20.4 dBi  
N-S peak -5.3 dBi at Zen -2.7  
N-S -3 dB beamwidth 14.7 deg.