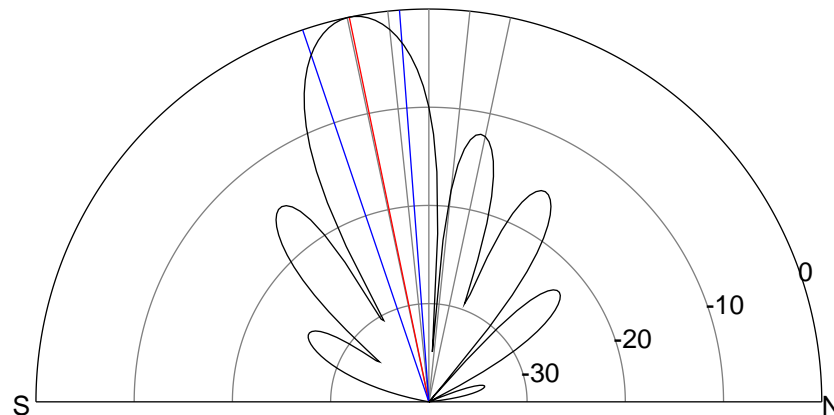
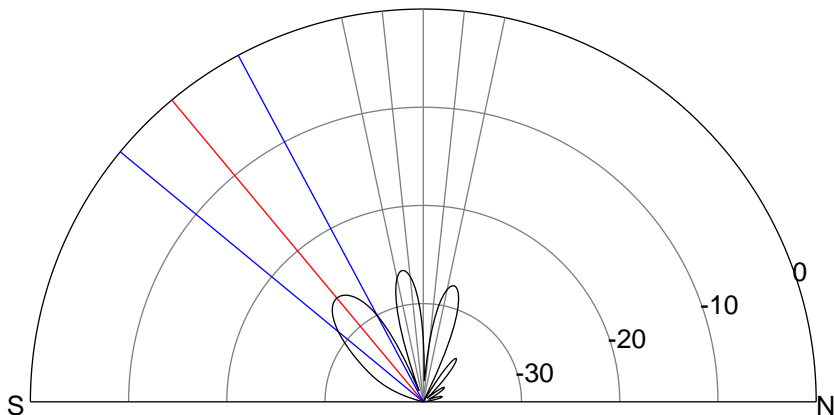
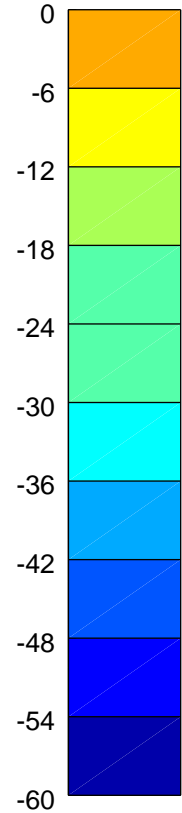
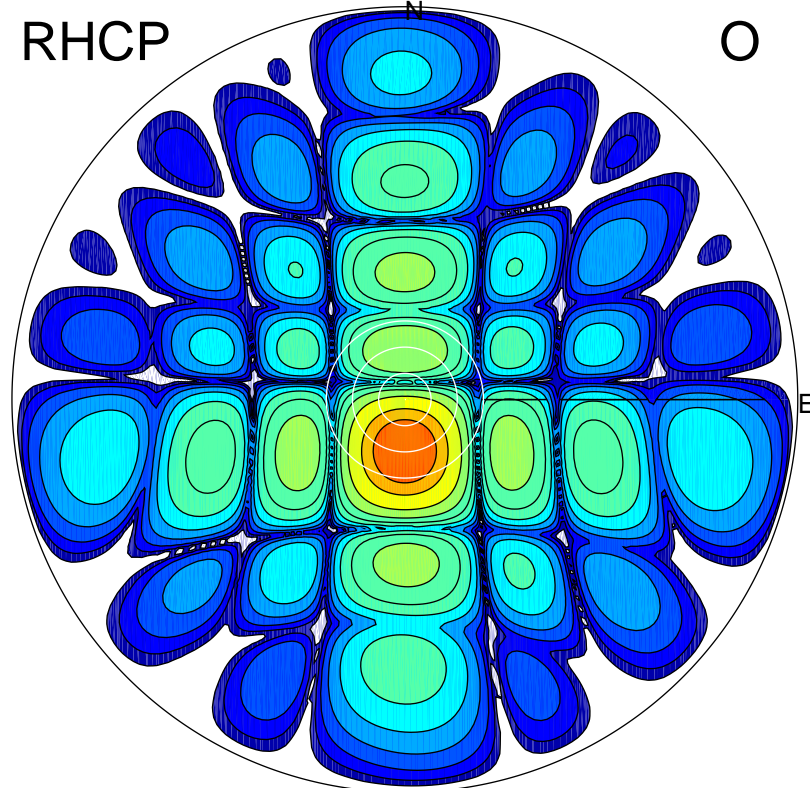
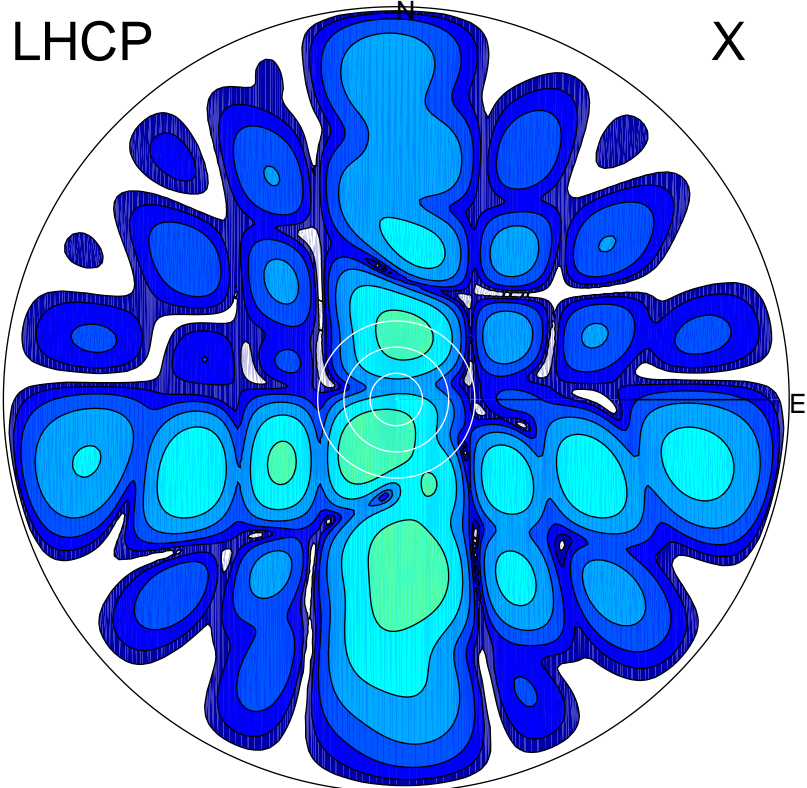


2015-12-02 14:32:00 A2 3.90000000 MHz 834.0 kW



ERP 0.5 MW

Peak gain -2.6 dBi at Az 207 Zen 12
RHCP gain 20.4 dBi
N-S peak -4.2 dBi at Zen -39.8
N-S -3 dB beamwidth 22.4 deg.

ERP 135.2 MW

Peak gain 22.1 dBi at Az 179 Zen 12
LHCP gain -5.2 dBi
N-S peak 22.1 dBi at Zen -11.7
N-S -3 dB beamwidth 14.4 deg.