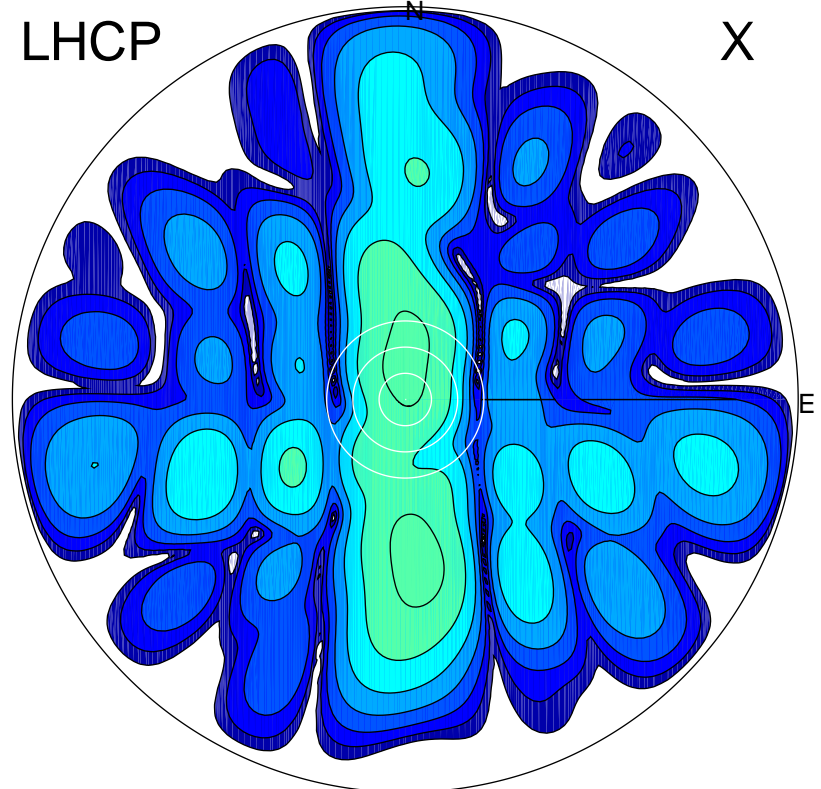


2015-12-02 13:47:57 A2 3.90000000 MHz 846.0 kW

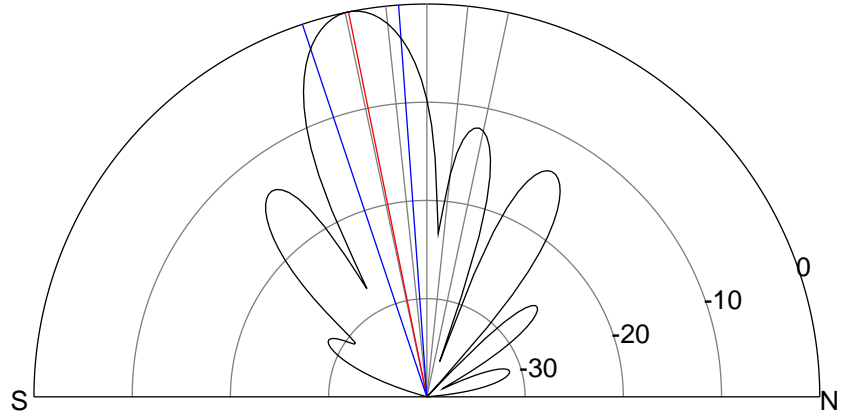
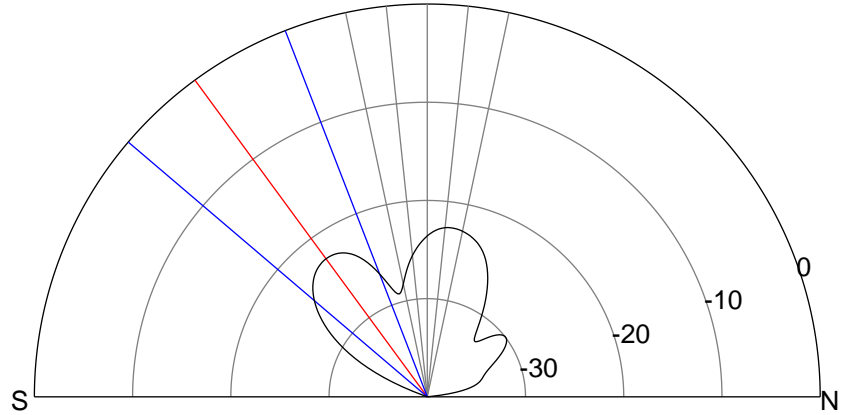
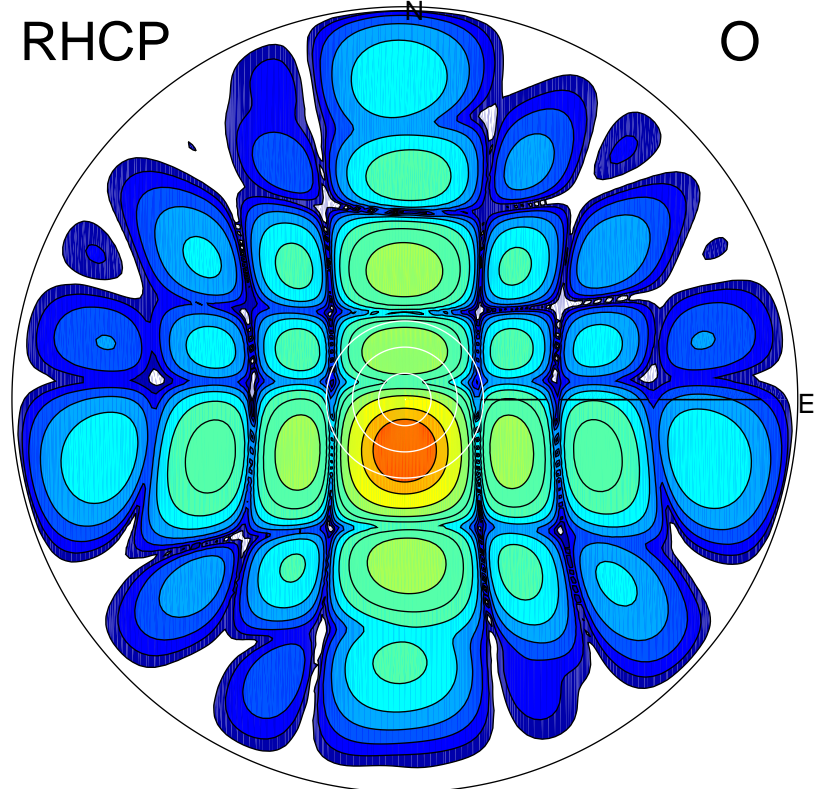
LHCP

X



RHCP

O



ERP 0.8 MW

Peak gain -0.1 dBi at Az 175 Zen 38
RHCP gain 7.8 dBi
N-S peak -0.6 dBi at Zen -36.3
N-S -3 dB beamwidth 28.4 deg.

ERP 133.5 MW

Peak gain 22.0 dBi at Az 179 Zen 12
LHCP gain -6.4 dBi
N-S peak 22.0 dBi at Zen -11.5
N-S -3 dB beamwidth 14.3 deg.