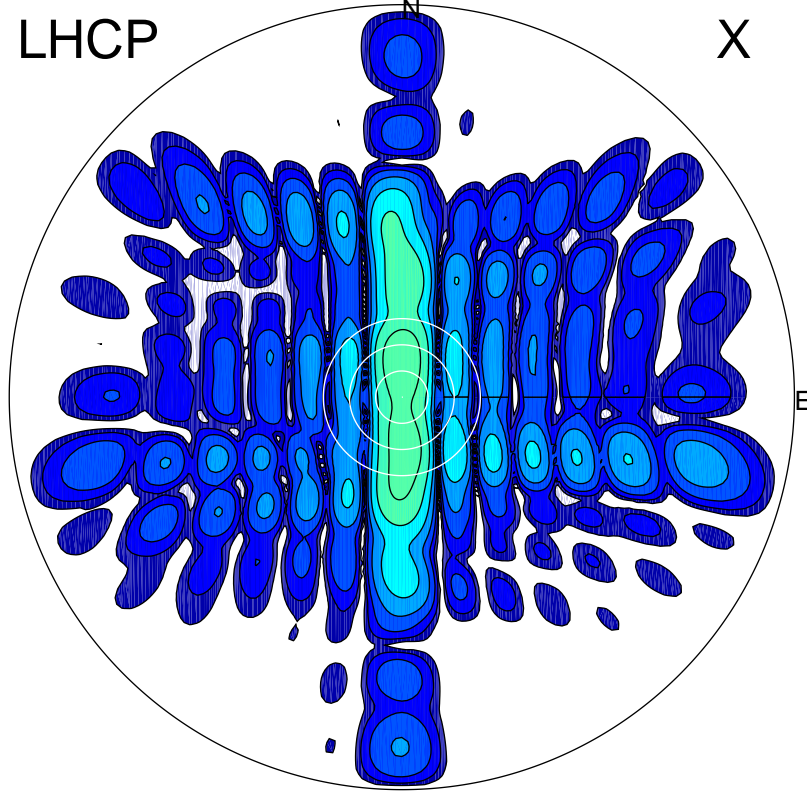


2015-11-27 12:31:02 A1 5.42300000 MHz 800.0 kW

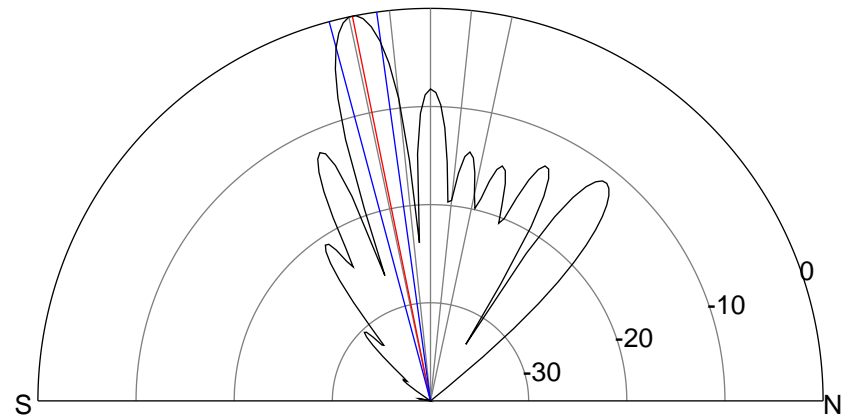
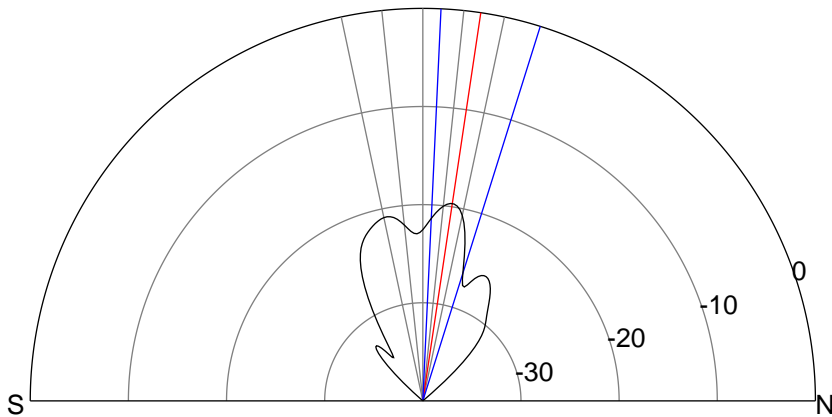
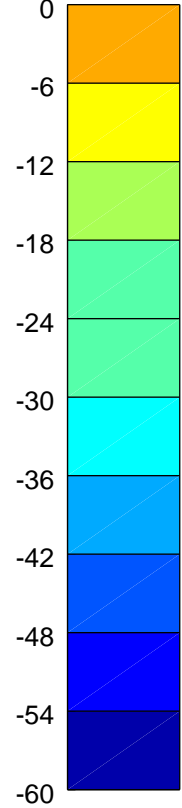
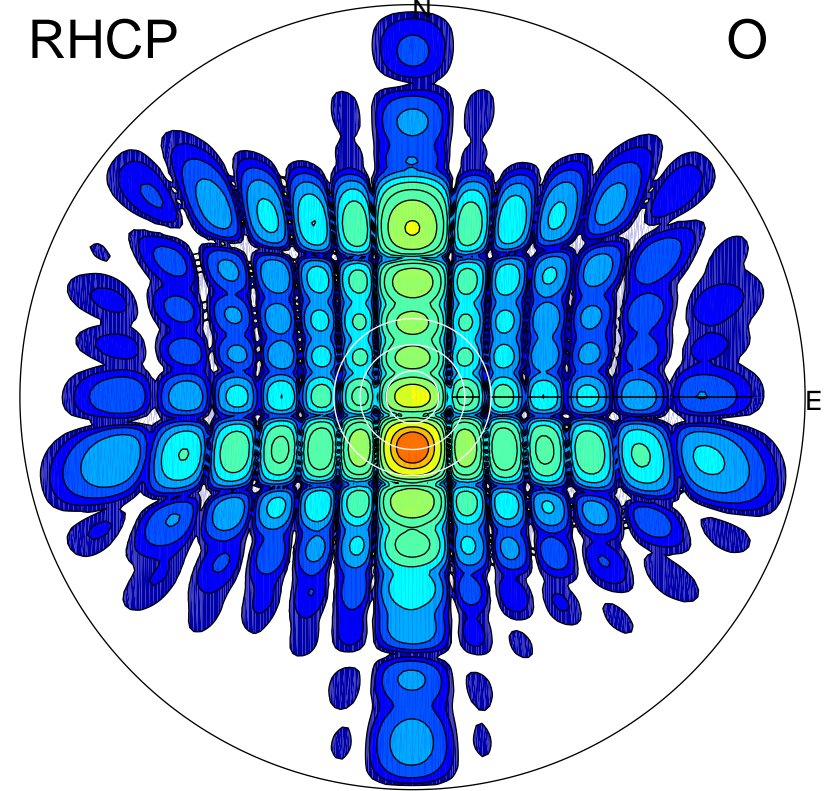
LHCP

X



RHCP

O



### ERP 4.4 MW

Peak gain 7.4 dBi at Az 359 Zen 8  
RHCP gain 12.2 dBi  
N-S peak 7.4 dBi at Zen 8.5  
N-S -3 dB beamwidth 14.8 deg.

### ERP 406.8 MW

Peak gain 27.1 dBi at Az 180 Zen 11  
LHCP gain 6.2 dBi  
N-S peak 27.1 dBi at Zen -11.5  
N-S -3 dB beamwidth 7.1 deg.