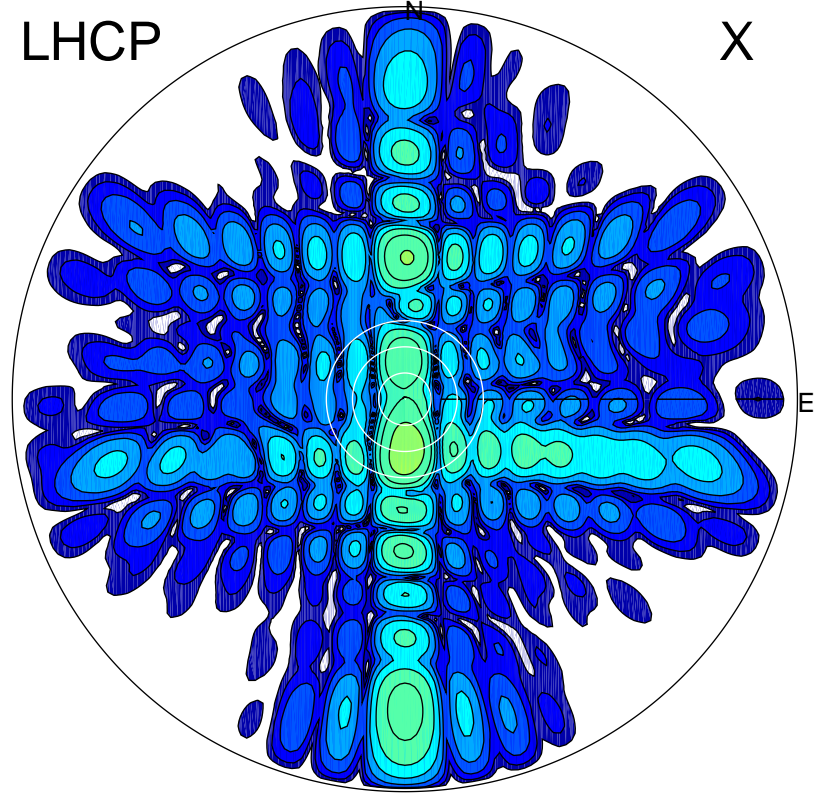


2015-11-27 11:56:32 A1 6.20000000 MHz 798.0 kW

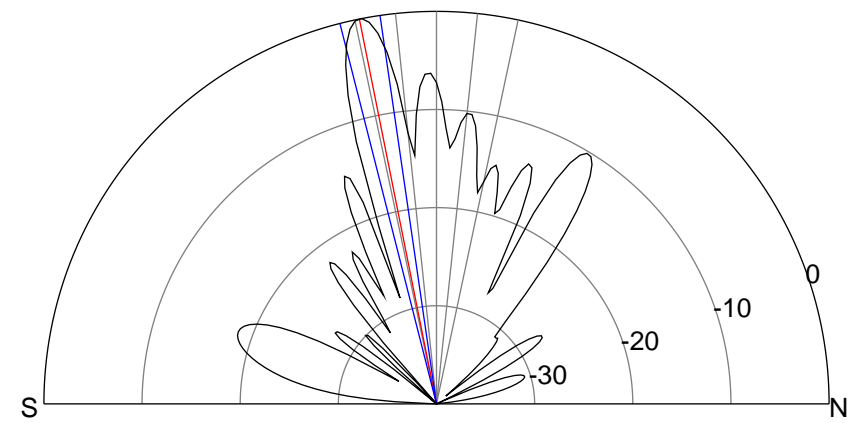
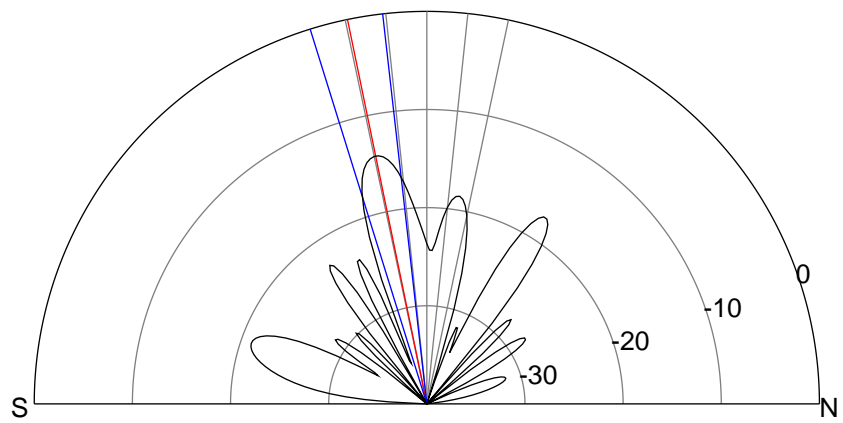
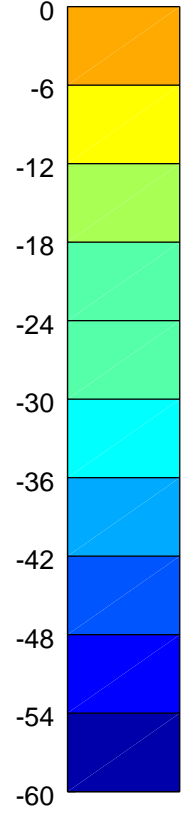
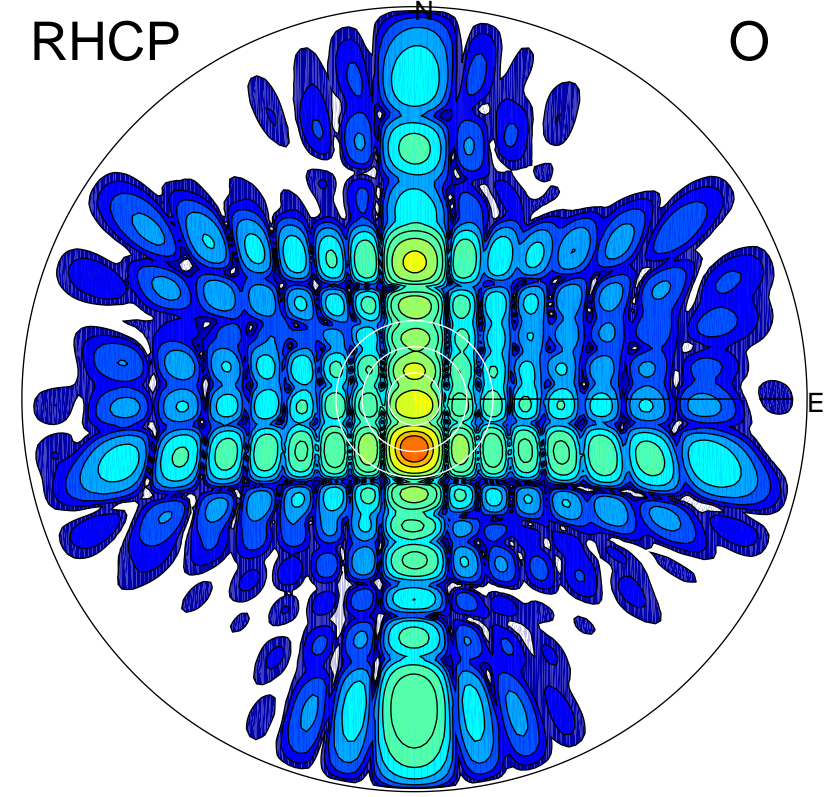
LHCP

X



RHCP

O



ERP 17.4 MW

Peak gain 13.4 dBi at Az 176 Zen 11
RHCP gain 27.3 dBi
N-S peak 13.3 dBi at Zen -11.7
N-S -3 dB beamwidth 10.8 deg.

ERP 449.0 MW

Peak gain 27.5 dBi at Az 180 Zen 11
LHCP gain 13.3 dBi
N-S peak 27.5 dBi at Zen -11.3
N-S -3 dB beamwidth 6.0 deg.