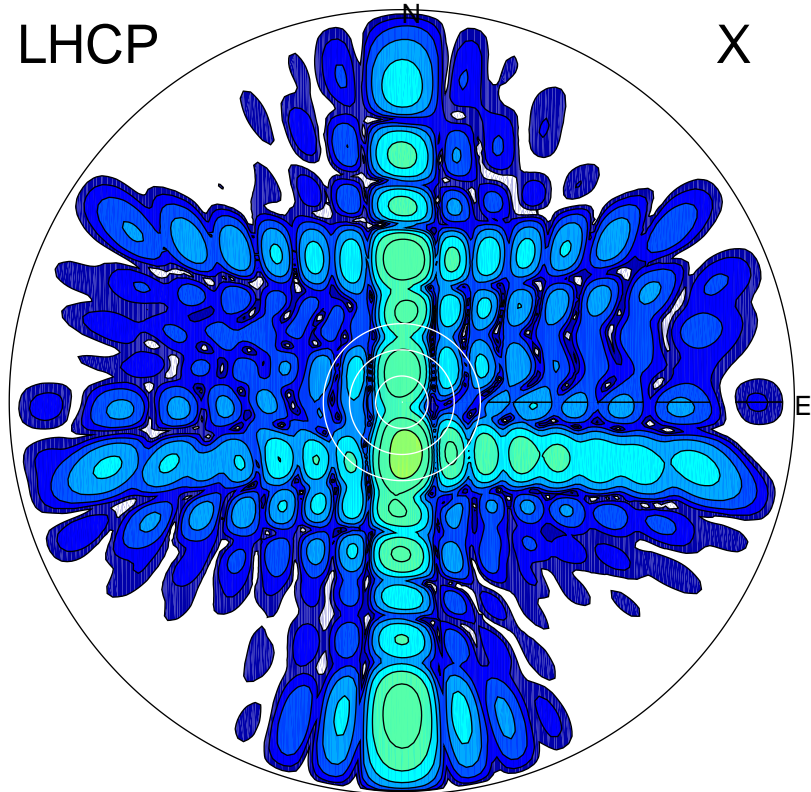


2015-11-27 11:25:02 A1 6.20000000 MHz 818.0 kW

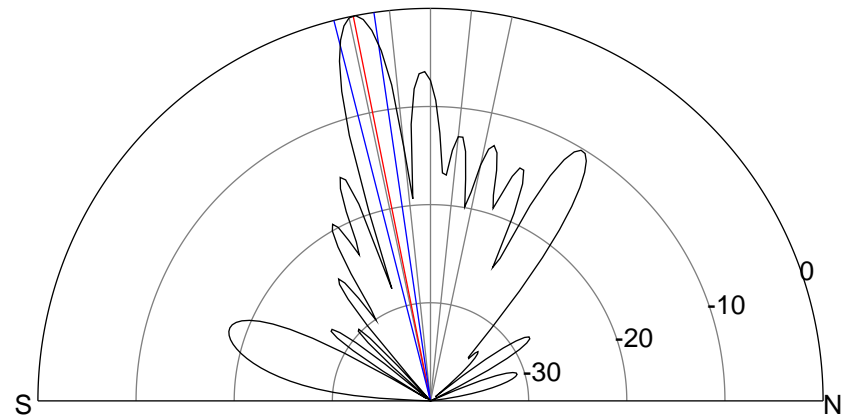
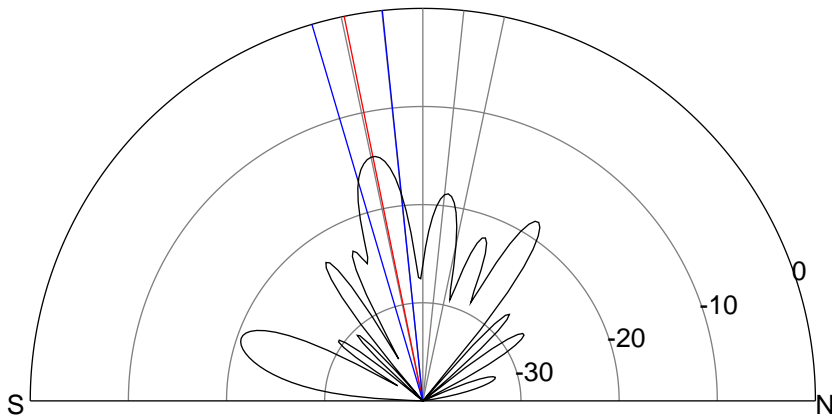
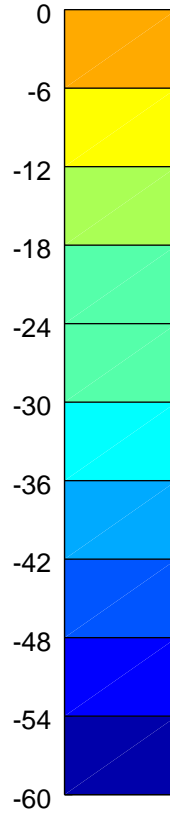
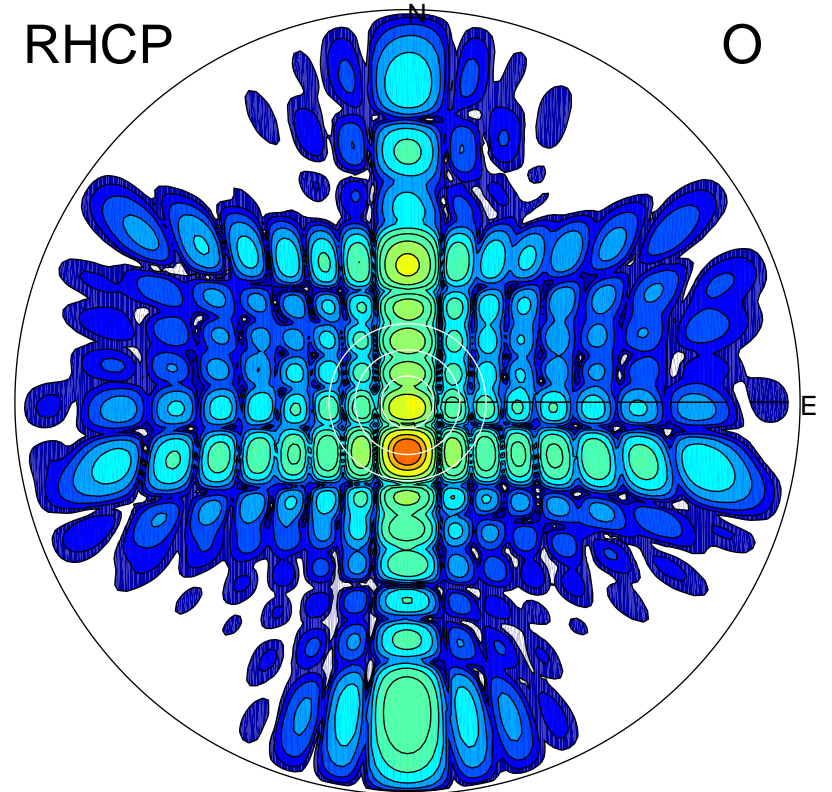
LHCP

X



RHCP

O



ERP 18.0 MW

Peak gain 13.4 dBi at Az 174 Zen 12
RHCP gain 27.1 dBi
N-S peak 13.1 dBi at Zen -11.6
N-S -3 dB beamwidth 10.5 deg.

ERP 476.1 MW

Peak gain 27.6 dBi at Az 181 Zen 11
LHCP gain 12.9 dBi
N-S peak 27.7 dBi at Zen -11.4
N-S -3 dB beamwidth 6.0 deg.