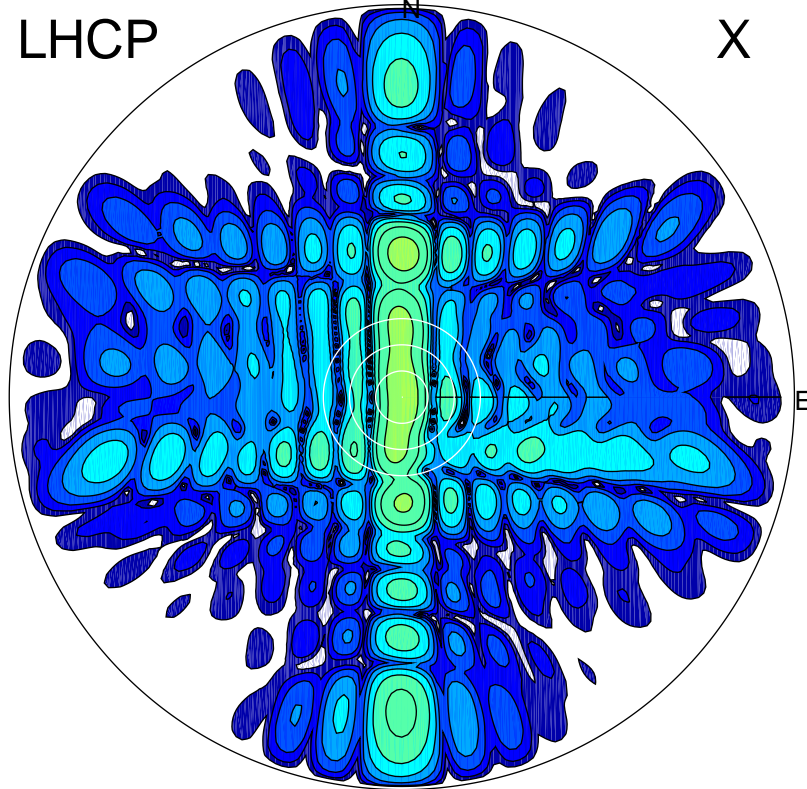


2015-11-26 11:51:02 A1 6.20000000 MHz 869.0 kW

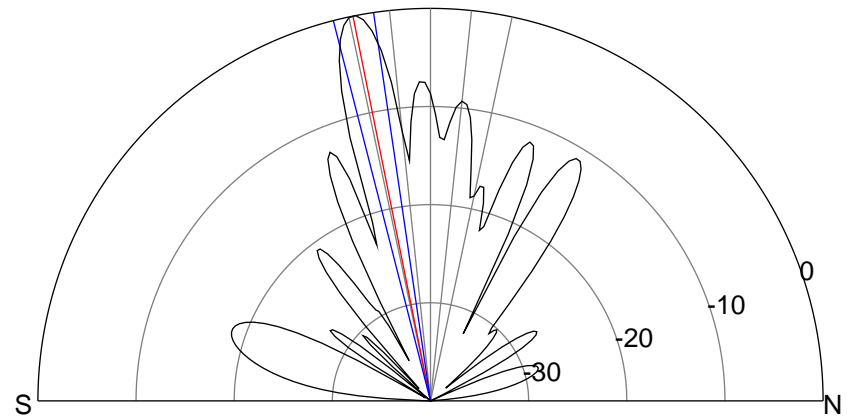
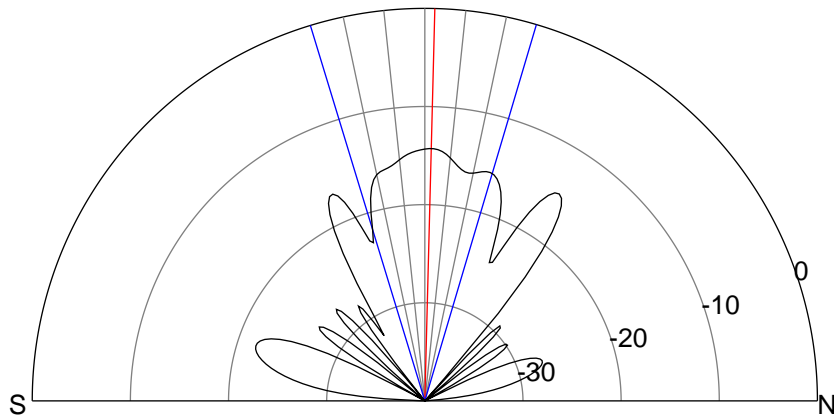
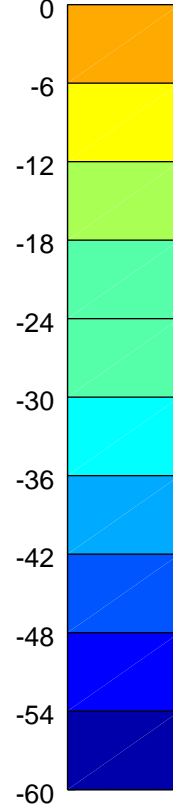
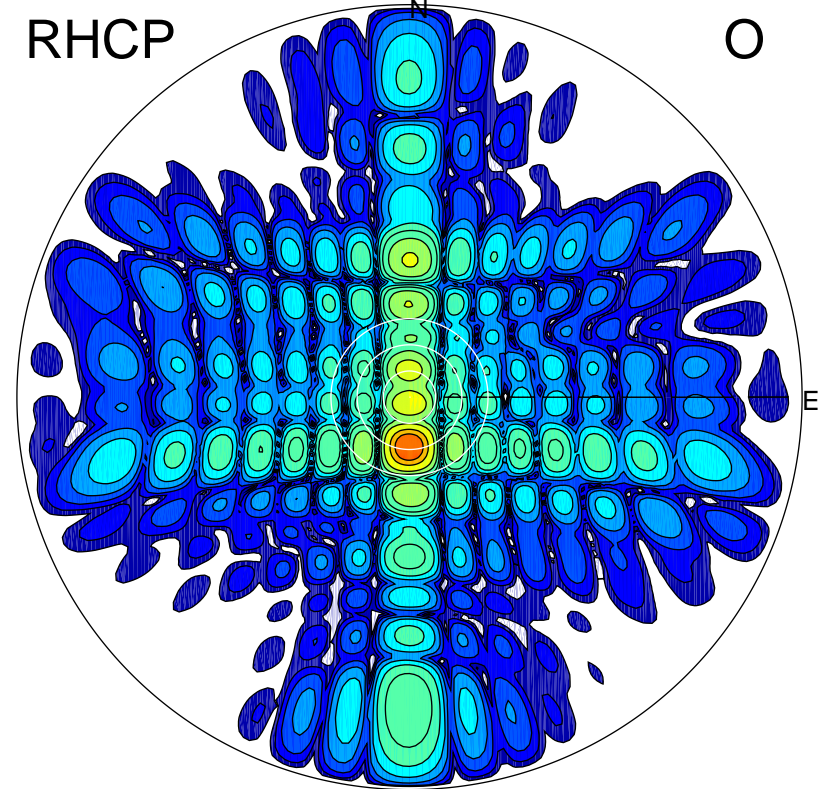
LHCP

X



RHCP

O



### ERP 17.3 MW

Peak gain 13.0 dBi at Az 10 Zen 1  
RHCP gain 16.5 dBi  
N-S peak 13.0 dBi at Zen 1.5  
N-S -3 dB beamwidth 33.5 deg.

### ERP 461.5 MW

Peak gain 27.3 dBi at Az 180 Zen 11  
LHCP gain 11.0 dBi  
N-S peak 27.3 dBi at Zen -11.4  
N-S -3 dB beamwidth 6.0 deg.