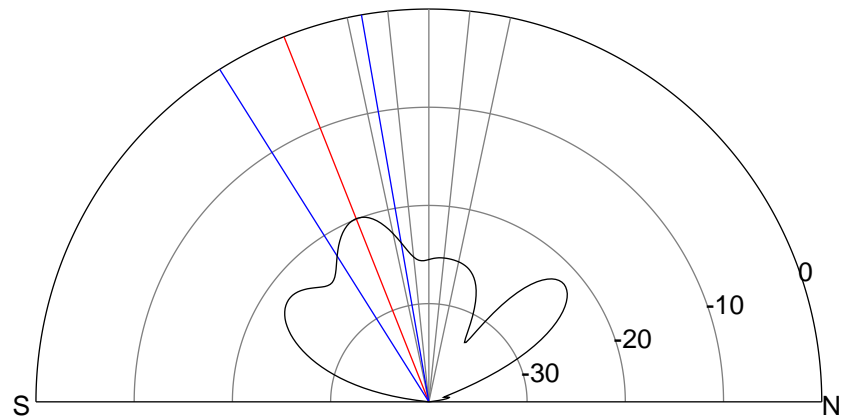
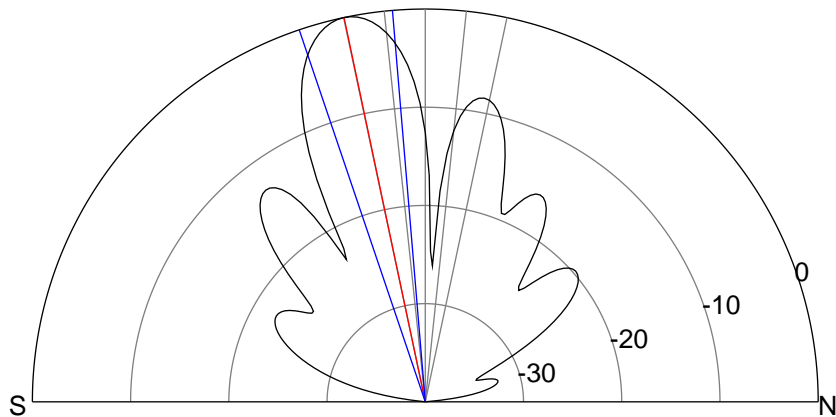
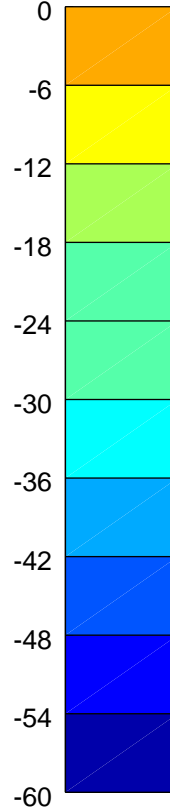
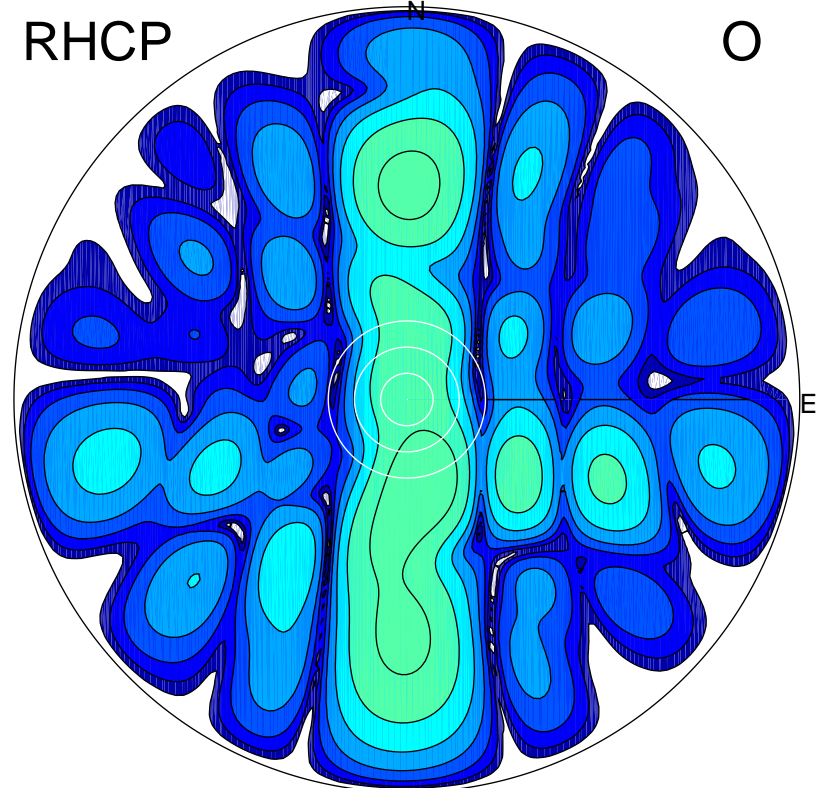
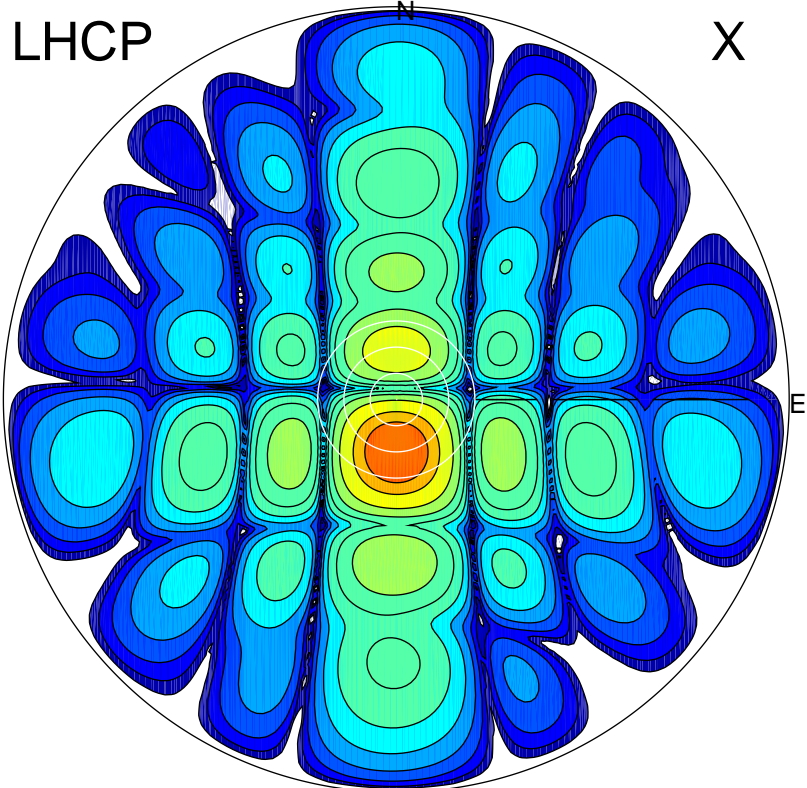


2015-11-18 14:30:35 A2 3.90000000 MHz 772.0 kW



ERP 116.7 MW

Peak gain 21.8 dBi at Az 181 Zen 12
RHCP gain -0.8 dBi
N-S peak 21.8 dBi at Zen -11.9
N-S -3 dB beamwidth 13.9 deg.

ERP 1.4 MW

Peak gain 2.5 dBi at Az 170 Zen 20
LHCP gain 17.6 dBi
N-S peak 1.9 dBi at Zen -21.6
N-S -3 dB beamwidth 22.3 deg.