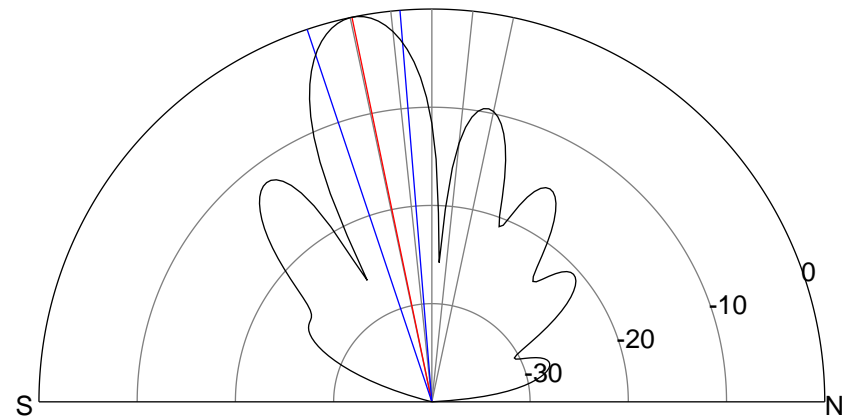
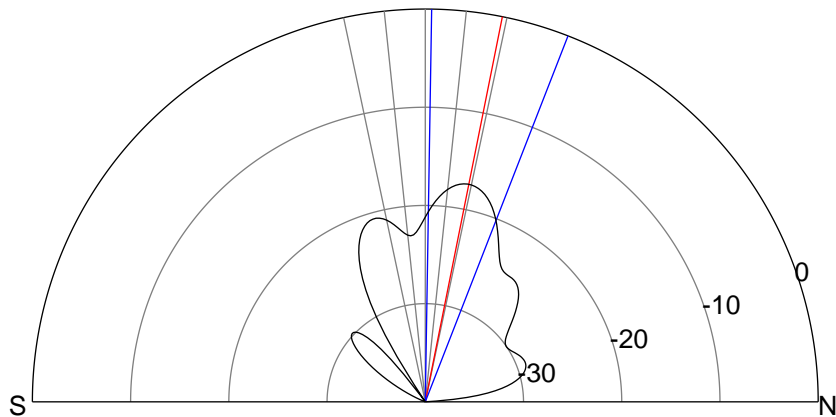
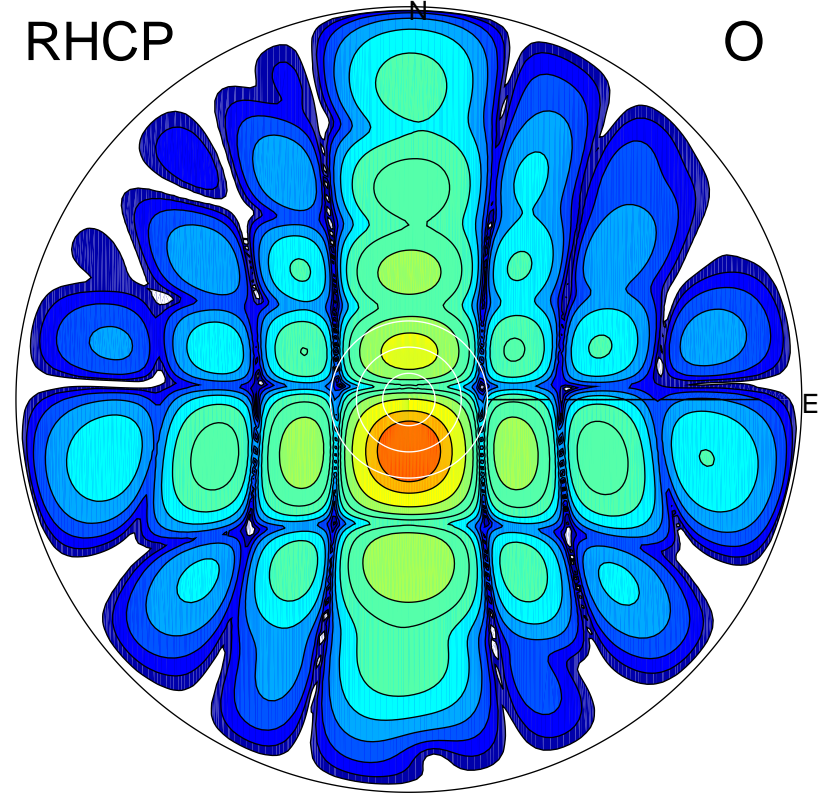
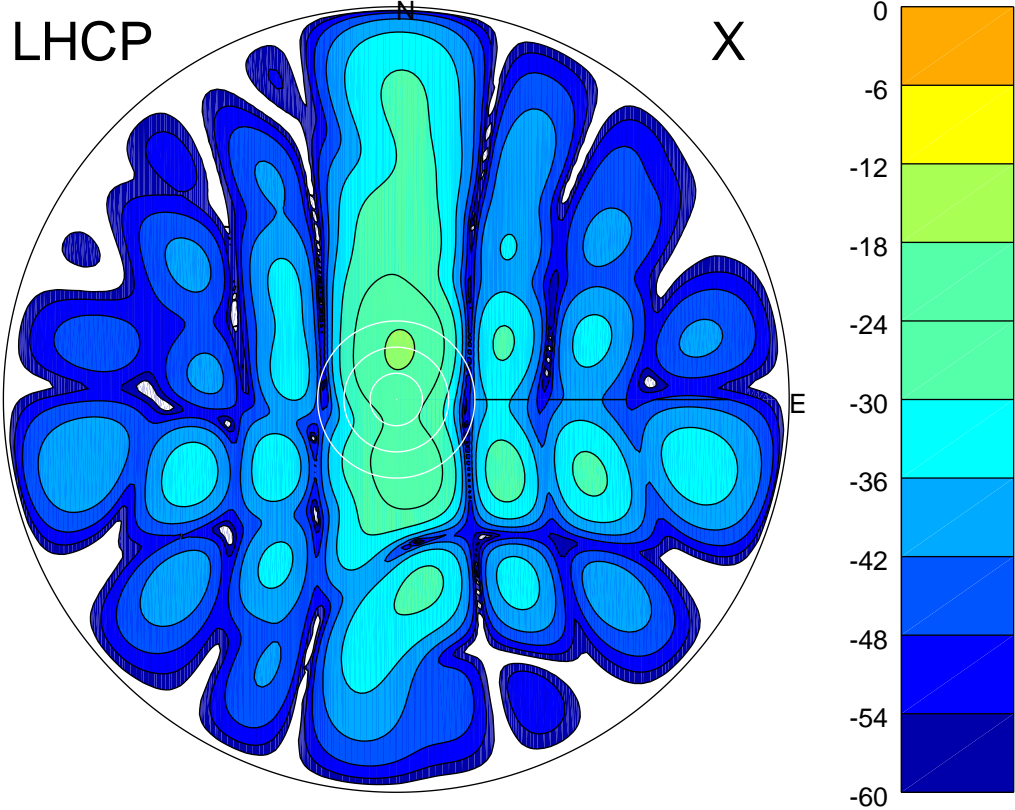


2015-11-18 14:14:55 A2 3.90000000 MHz 773.0 kW



ERP 2.2 MW

Peak gain 4.5 dBi at Az 3 Zen 12
RHCP gain 12.1 dBi
N-S peak 4.4 dBi at Zen 11.3
N-S -3 dB beamwidth 20.4 deg.

ERP 118.2 MW

Peak gain 21.8 dBi at Az 180 Zen 12
LHCP gain 0.8 dBi
N-S peak 21.8 dBi at Zen -11.7
N-S -3 dB beamwidth 13.9 deg.