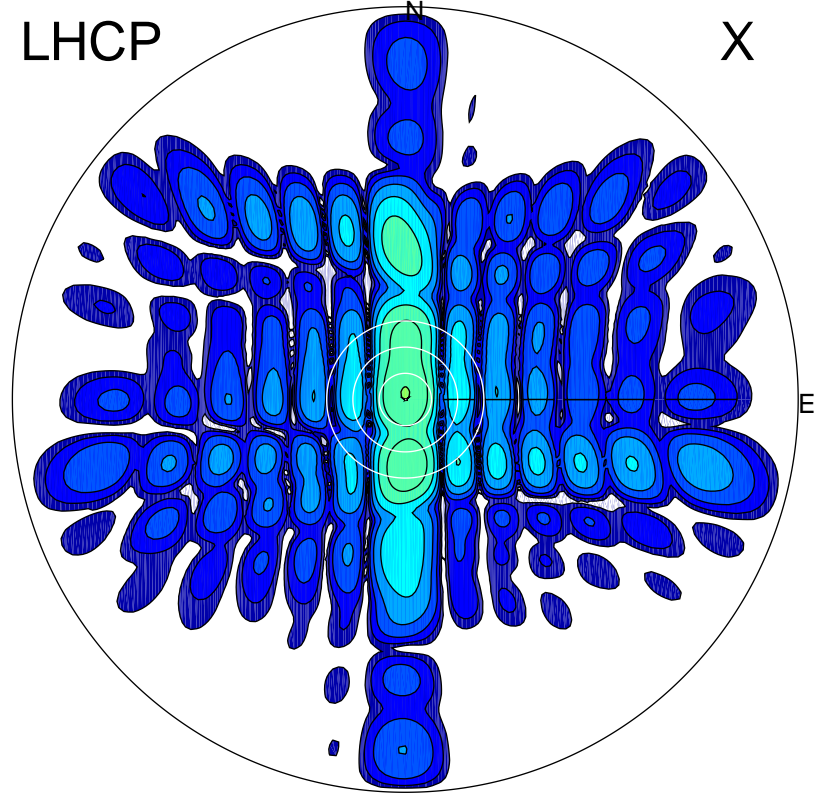


2015-11-18 13:31:50 A1 5.42300000 MHz 816.0 kW

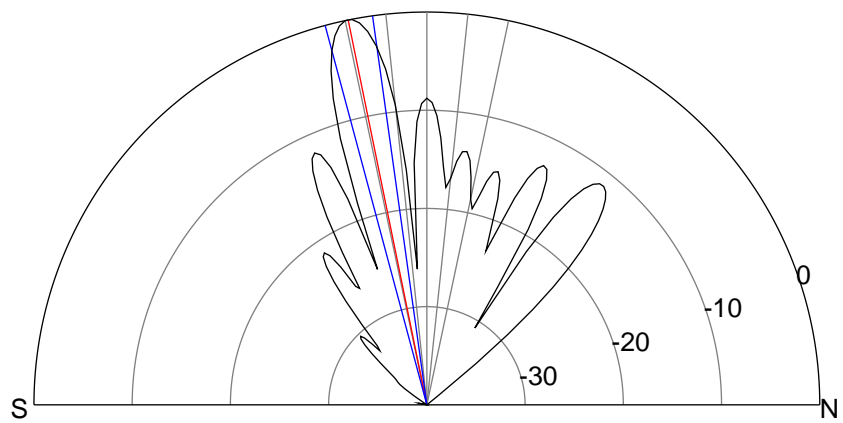
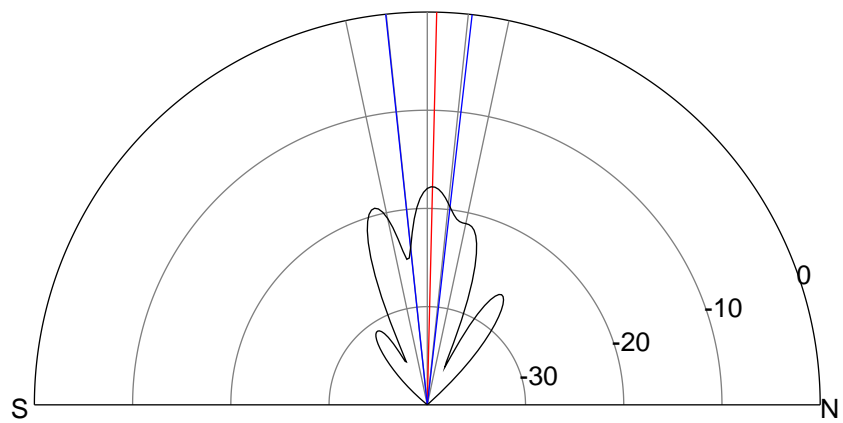
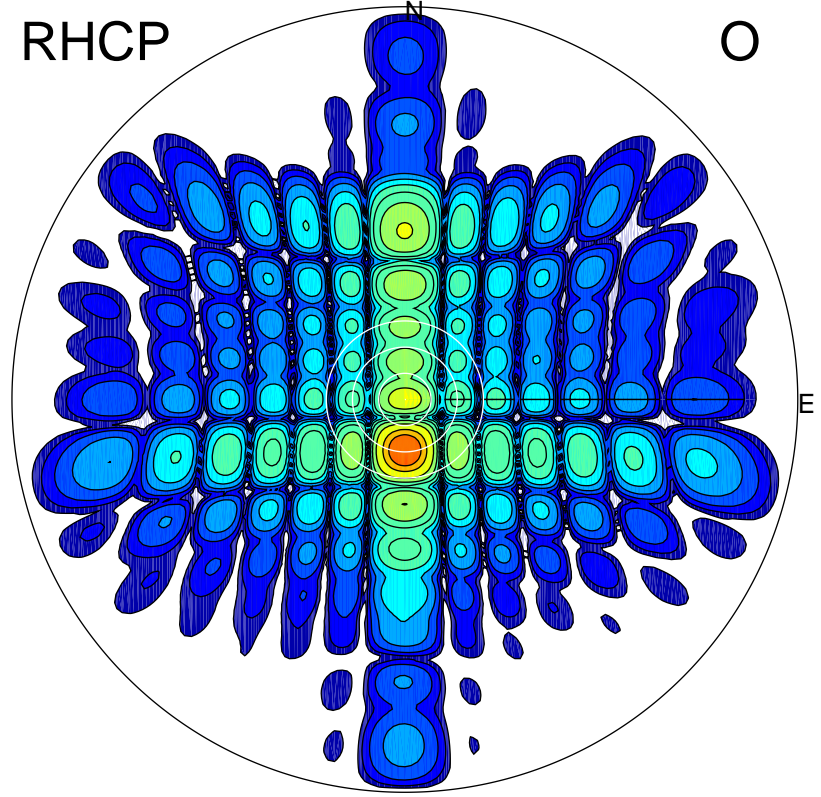
LHCP

X



RHCP

O



### ERP 6.9 MW

Peak gain 9.2 dBi at Az 359 Zen 1  
RHCP gain 17.8 dBi  
N-S peak 9.3 dBi at Zen 1.4  
N-S -3 dB beamwidth 12.6 deg.

### ERP 412.8 MW

Peak gain 27.0 dBi at Az 180 Zen 12  
LHCP gain 6.4 dBi  
N-S peak 27.1 dBi at Zen -11.6  
N-S -3 dB beamwidth 7.1 deg.