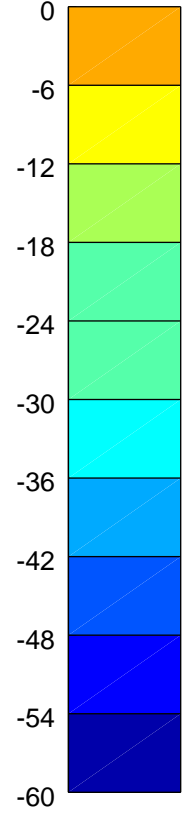
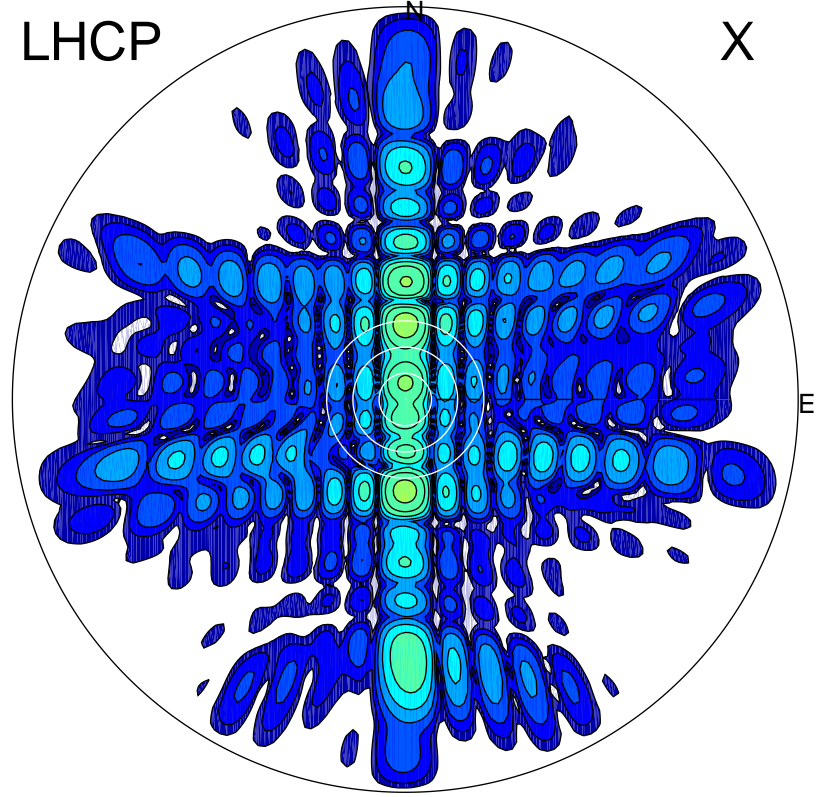


2015-11-18 12:17:05 A1 7.10000000 MHz 711.0 kW

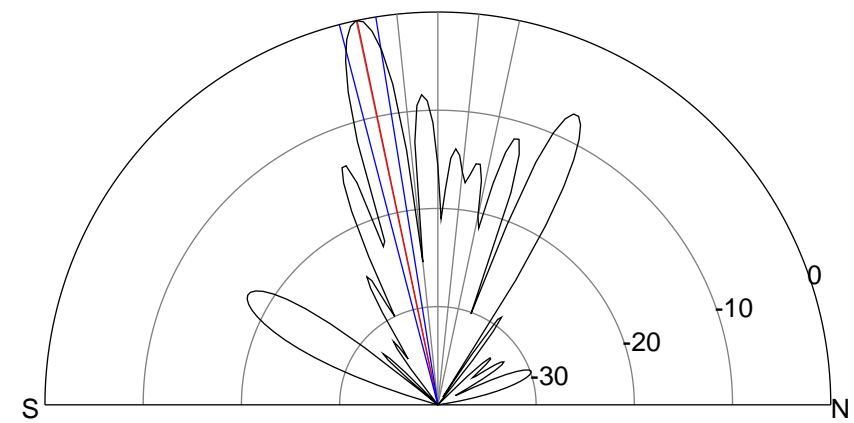
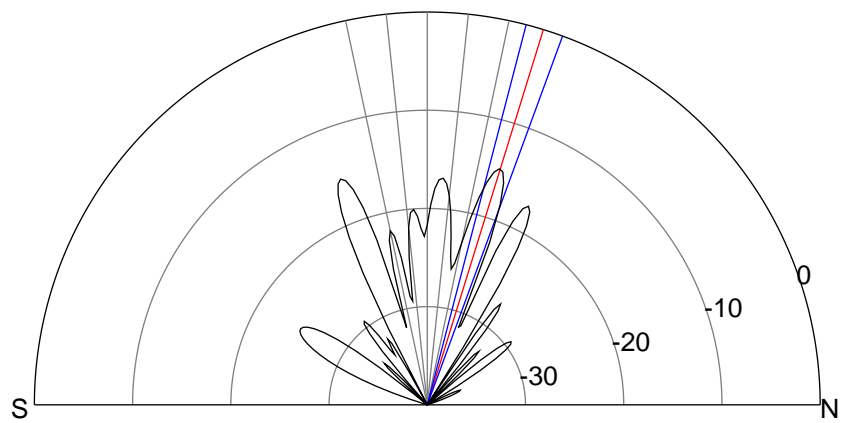
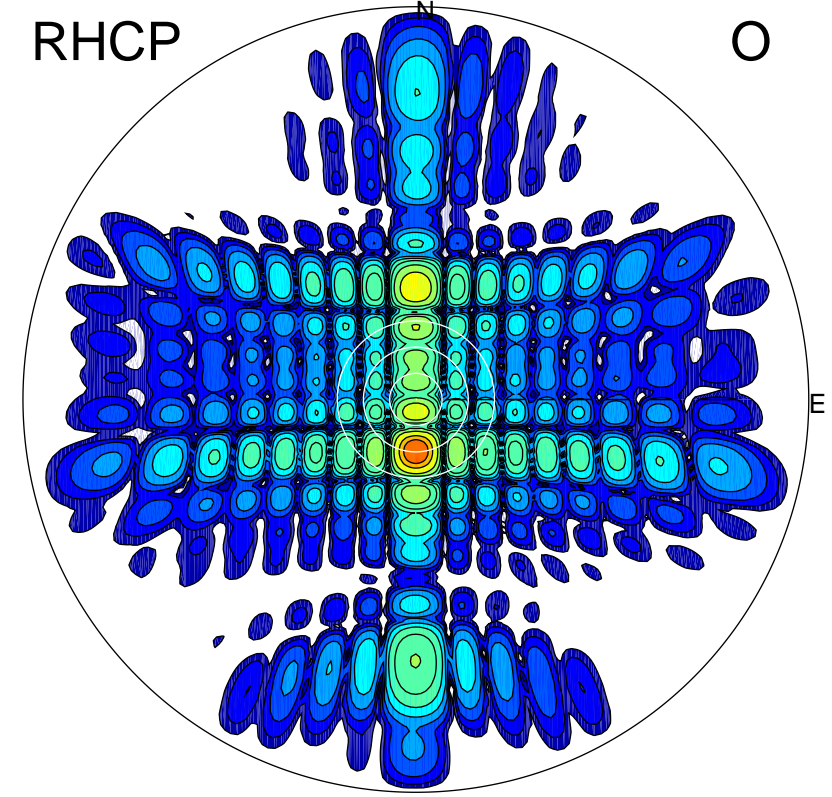
LHCP

X



RHCP

O



ERP 17.0 MW

Peak gain 13.8 dBi at Az 0 Zen 17
RHCP gain 16.9 dBi
N-S peak 13.8 dBi at Zen 17.2
N-S -3 dB beamwidth 5.6 deg.

ERP 523.0 MW

Peak gain 28.7 dBi at Az 180 Zen 12
LHCP gain 6.8 dBi
N-S peak 28.7 dBi at Zen -11.9
N-S -3 dB beamwidth 5.4 deg.