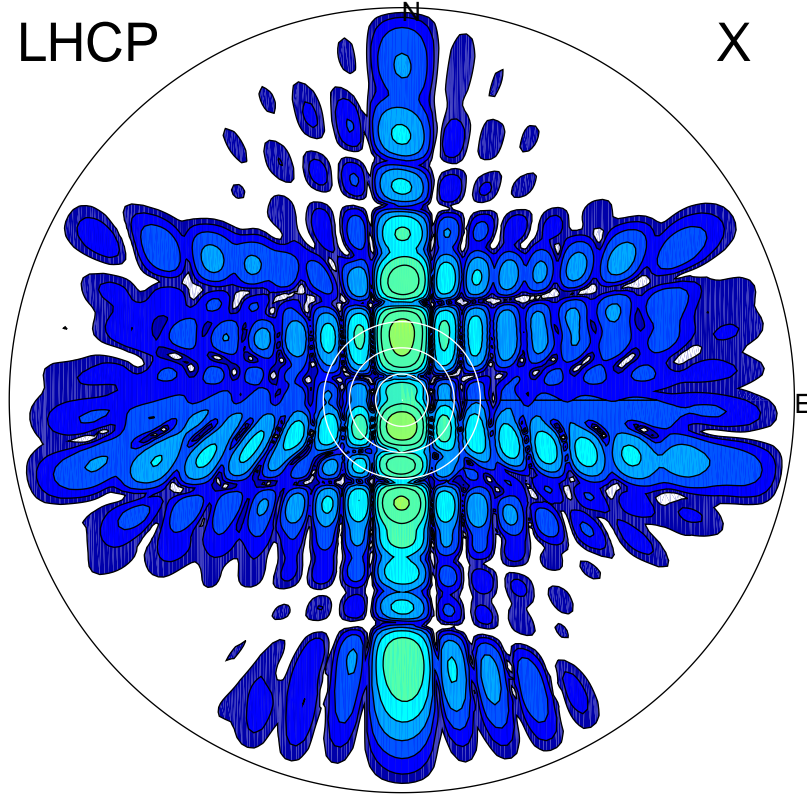


2015-11-18 10:03:55 A1 6.77000000 MHz 737.0 kW

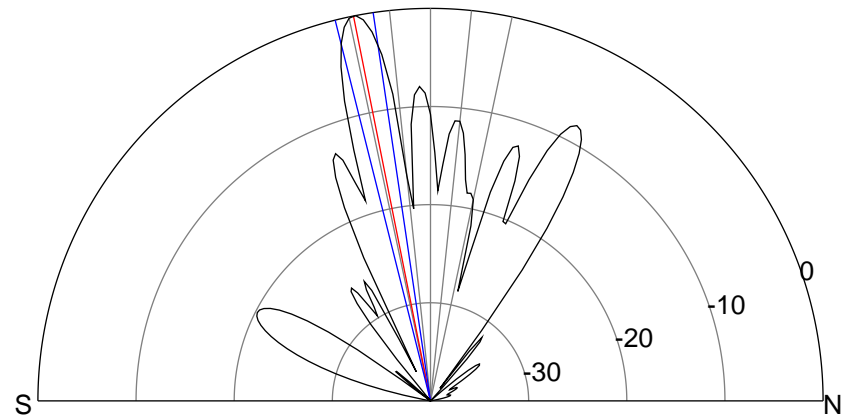
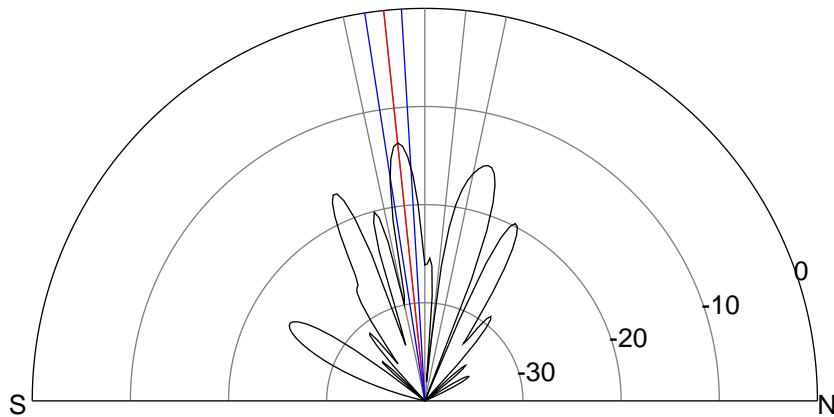
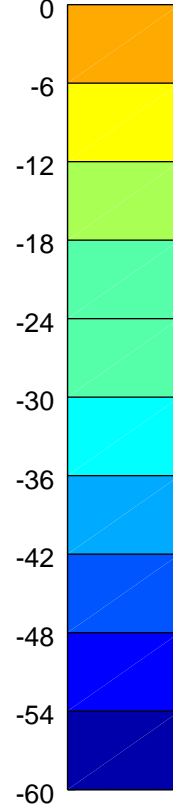
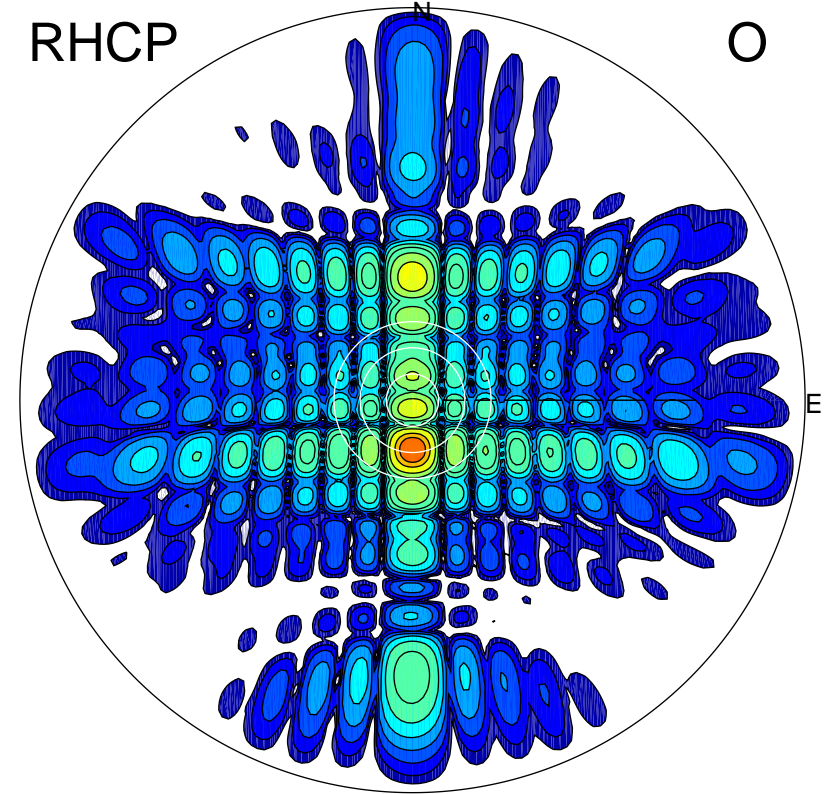
LHCP

X



RHCP

O



### ERP 21.8 MW

Peak gain 14.7 dBi at Az 181 Zen 6  
RHCP gain 11.3 dBi  
N-S peak 14.7 dBi at Zen -6.0  
N-S -3 dB beamwidth 5.4 deg.

### ERP 495.0 MW

Peak gain 28.3 dBi at Az 180 Zen 11  
LHCP gain -0.8 dBi  
N-S peak 28.3 dBi at Zen -11.3  
N-S -3 dB beamwidth 5.7 deg.