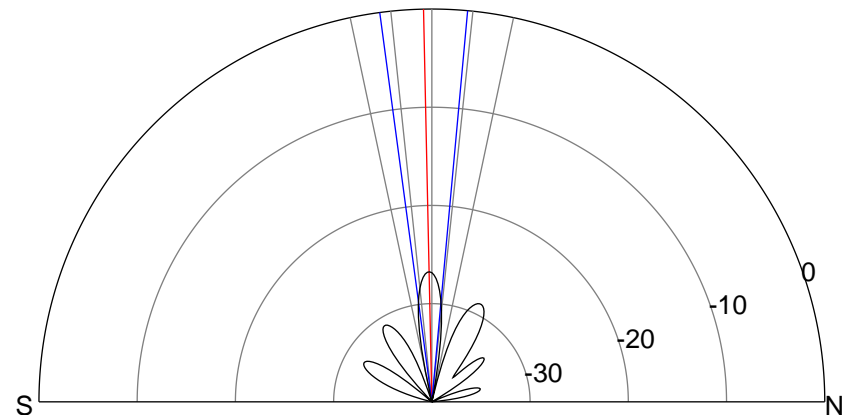
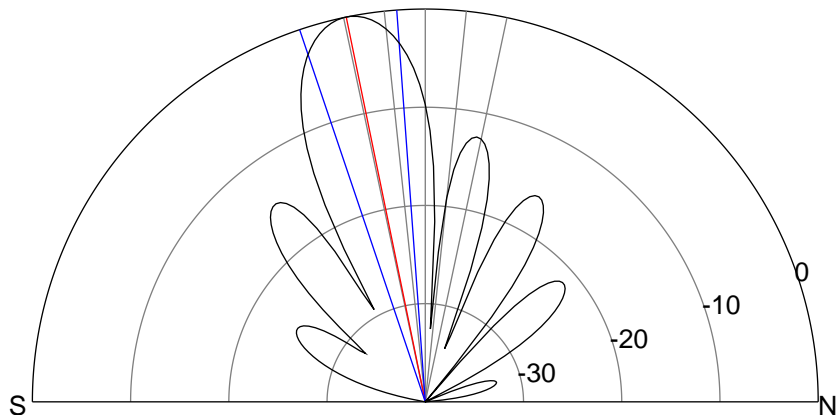
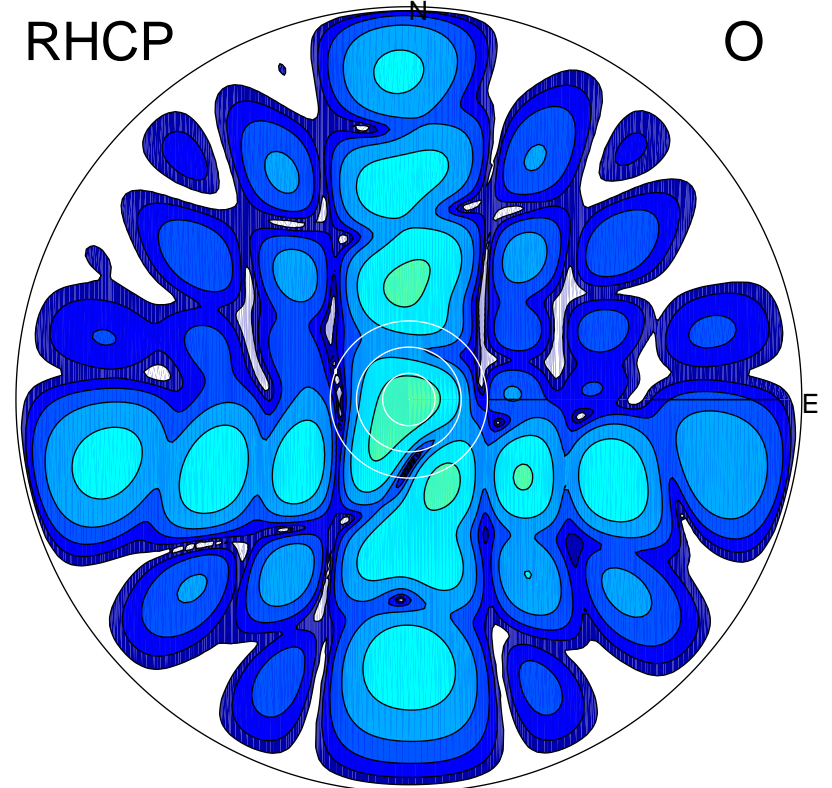
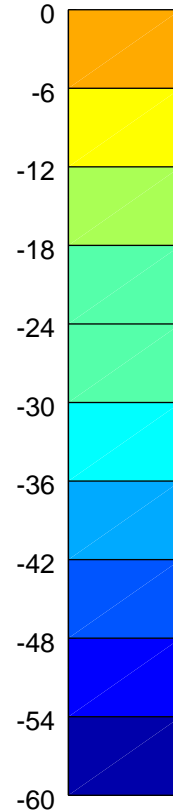
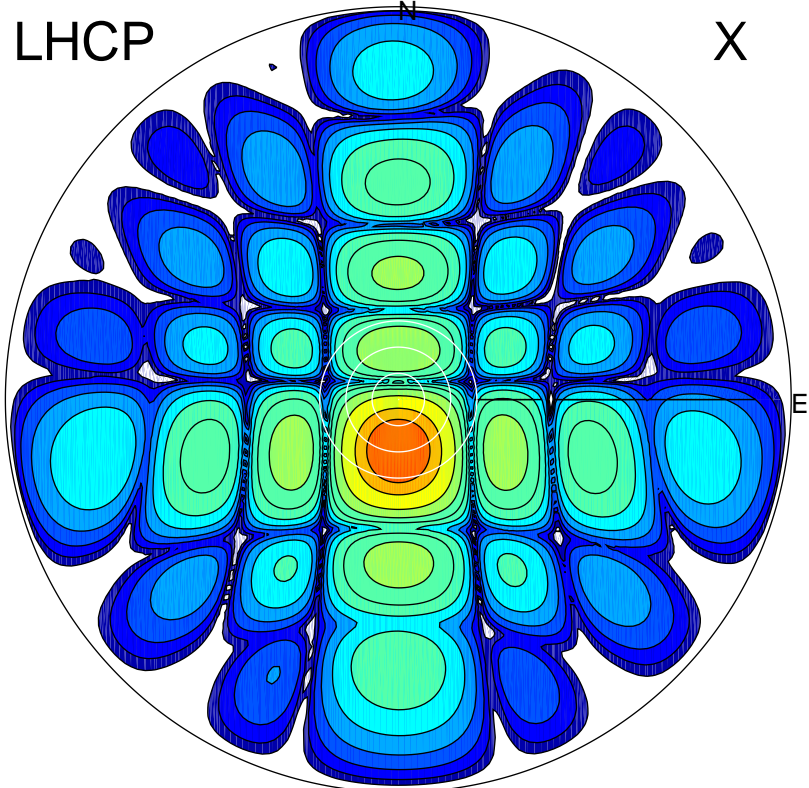


2015-11-17 14:51:15 A2 3.90000000 MHz 853.0 kW



### ERP 138.5 MW

Peak gain 22.1 dBi at Az 179 Zen 12  
RHCP gain -15.4 dBi  
N-S peak 22.1 dBi at Zen -11.6  
N-S -3 dB beamwidth 14.5 deg.

### ERP 0.3 MW

Peak gain -4.6 dBi at Az 188 Zen 1  
LHCP gain 14.4 dBi  
N-S peak -4.7 dBi at Zen -1.2  
N-S -3 dB beamwidth 12.8 deg.