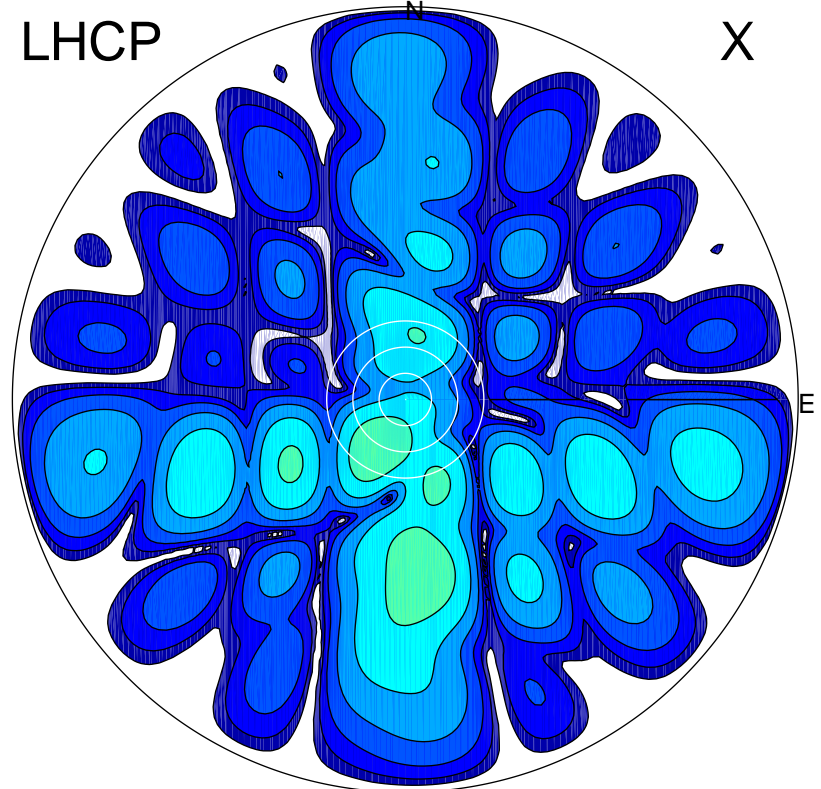


2015-11-17 14:32:00 A2 3.90000000 MHz 853.0 kW

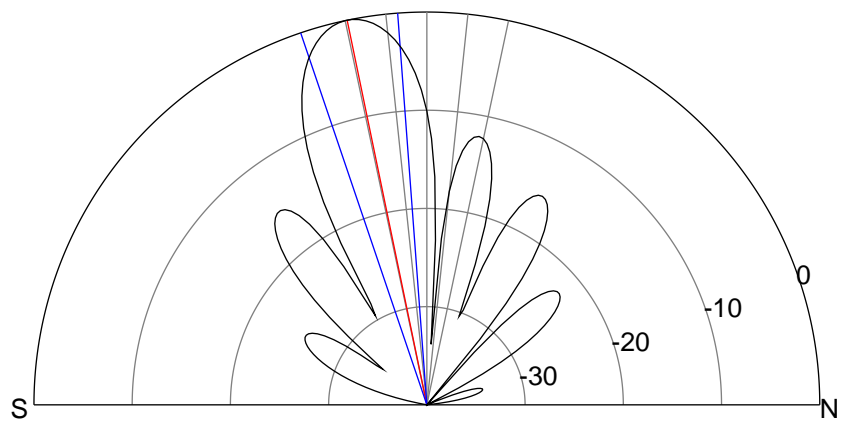
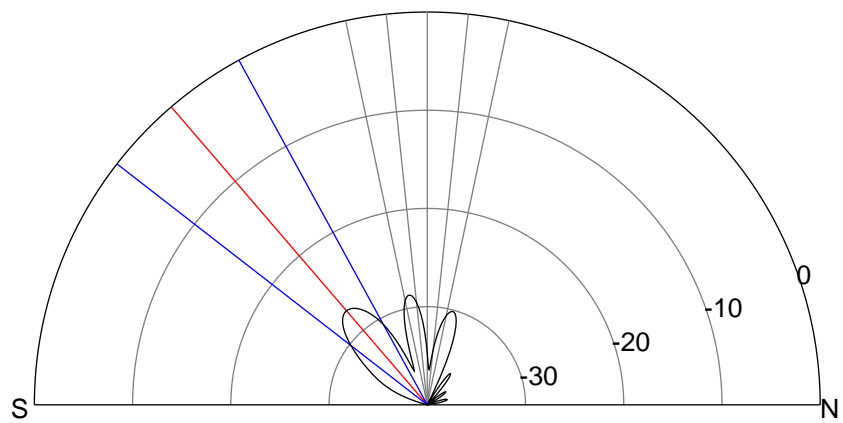
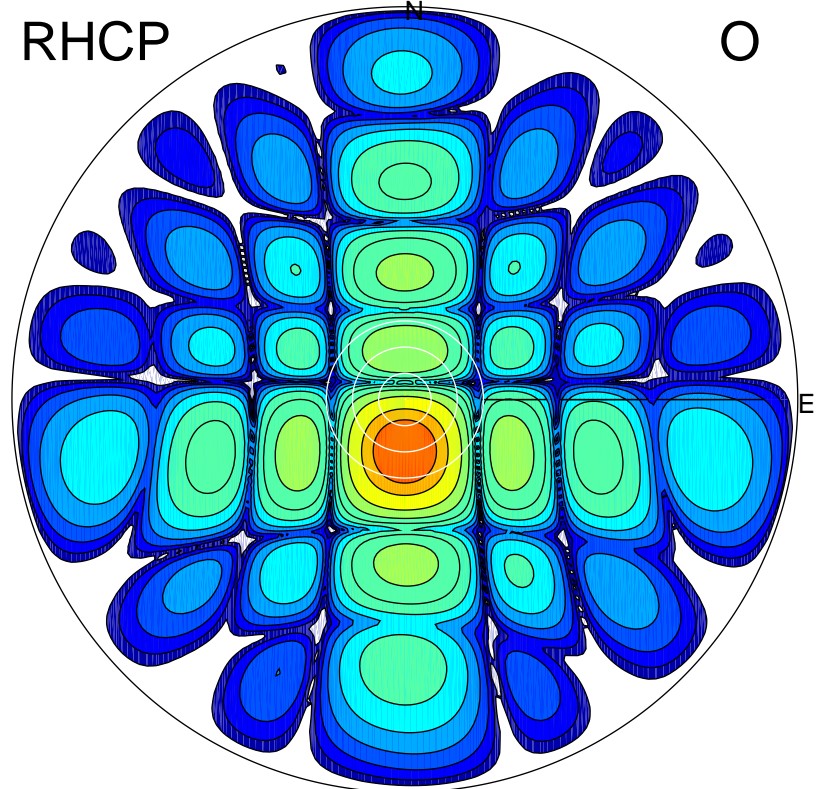
LHCP

X



RHCP

O



ERP 0.3 MW

Peak gain -3.9 dBi at Az 211 Zen 13
RHCP gain 19.6 dBi
N-S peak -5.3 dBi at Zen -40.7
N-S -3 dB beamwidth 23.5 deg.

ERP 138.4 MW

Peak gain 22.1 dBi at Az 179 Zen 12
LHCP gain -7.2 dBi
N-S peak 22.1 dBi at Zen -11.7
N-S -3 dB beamwidth 14.5 deg.