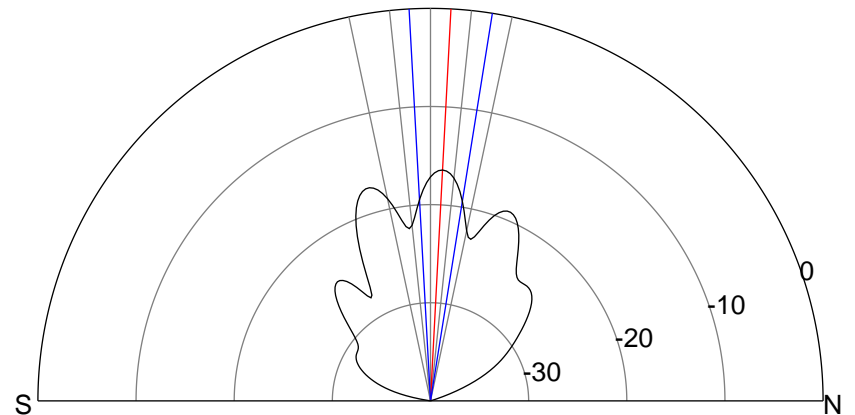
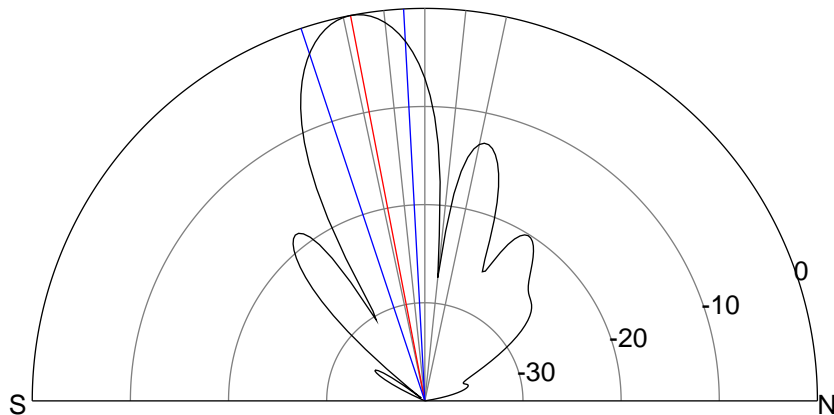
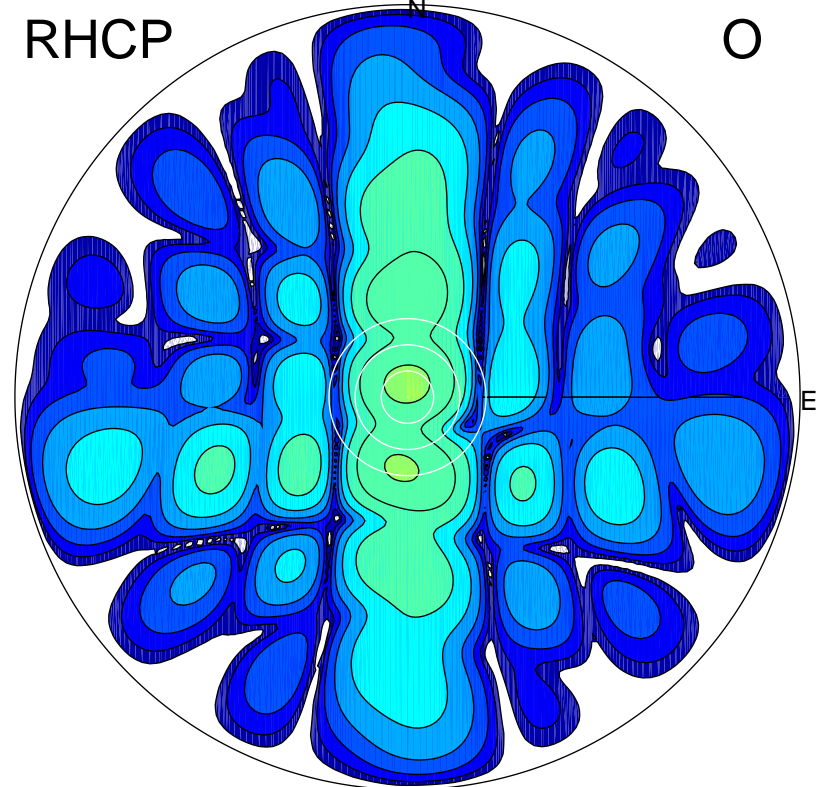
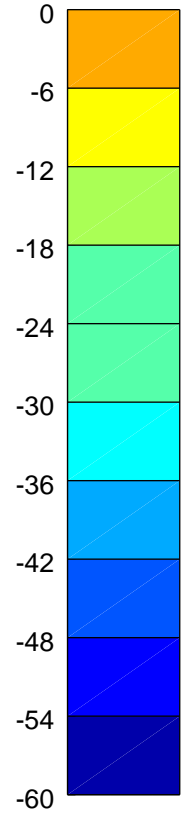
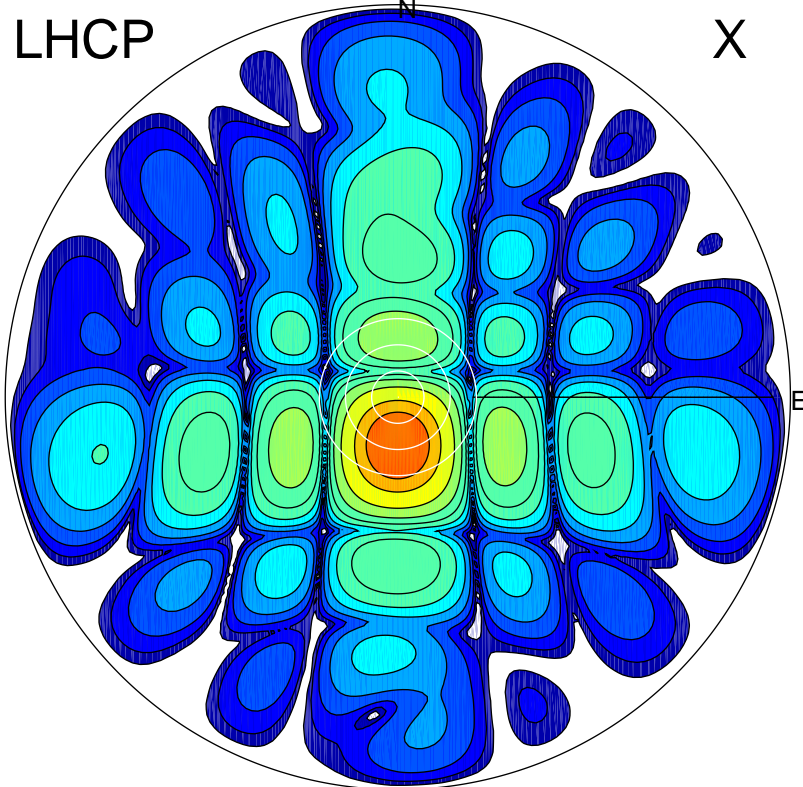


2015-11-13 15:33:27 A2 3.90000000 MHz 797.0 kW



### ERP 120.4 MW

Peak gain 21.8 dBi at Az 179 Zen 11  
RHCP gain 2.0 dBi  
N-S peak 21.8 dBi at Zen -10.9  
N-S -3 dB beamwidth 15.3 deg.

### ERP 2.7 MW

Peak gain 5.4 dBi at Az 357 Zen 3  
LHCP gain 7.9 dBi  
N-S peak 5.3 dBi at Zen 3.0  
N-S -3 dB beamwidth 12.2 deg.