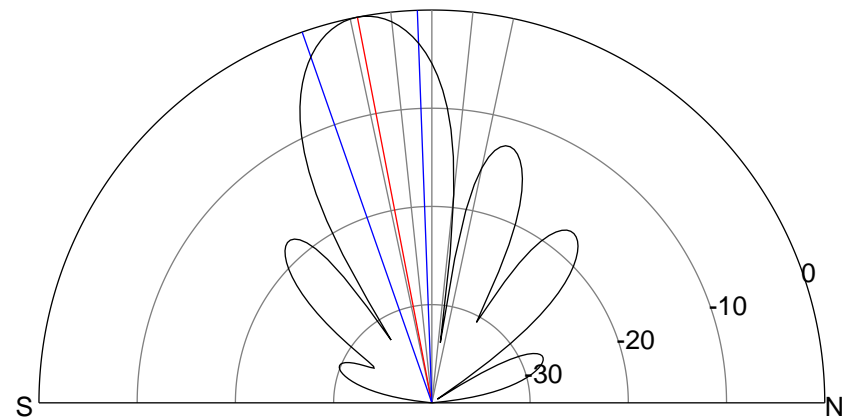
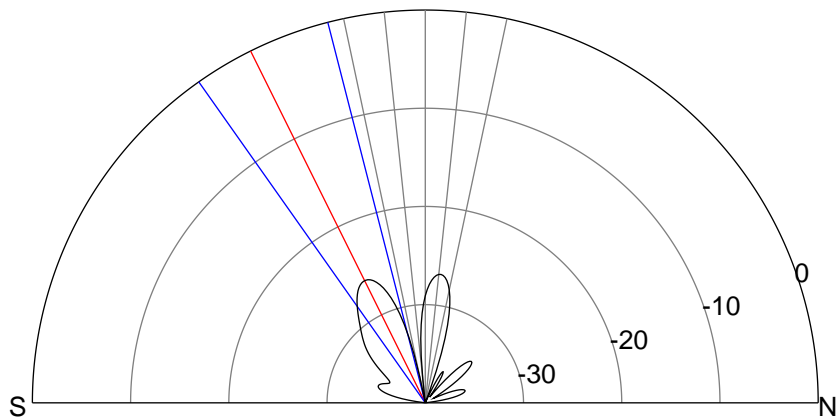
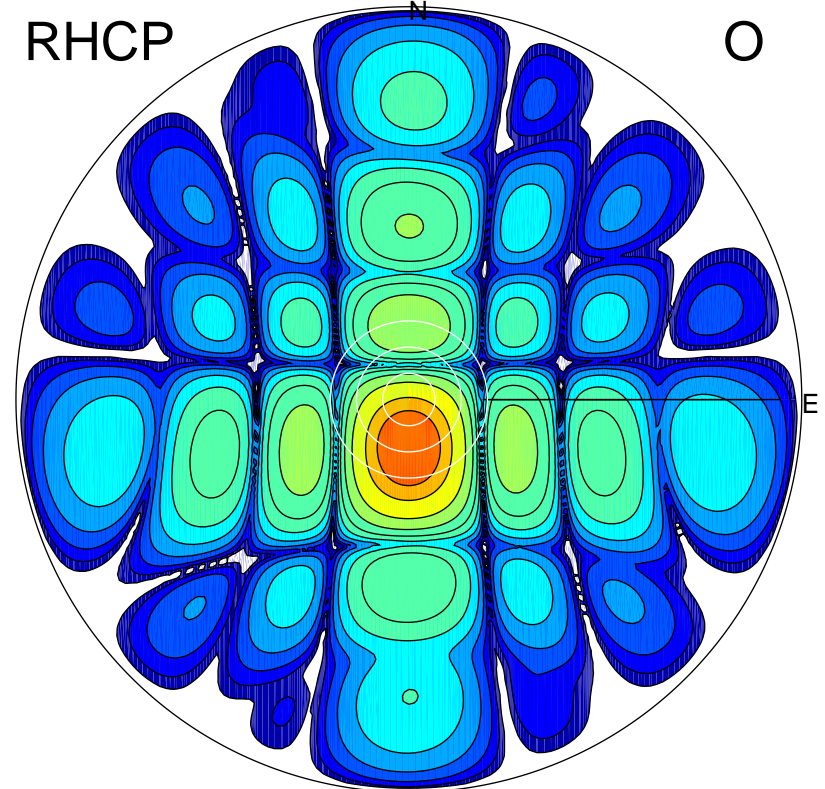
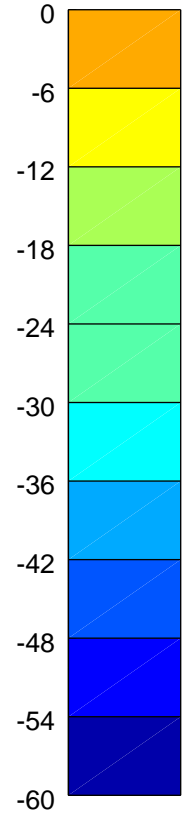
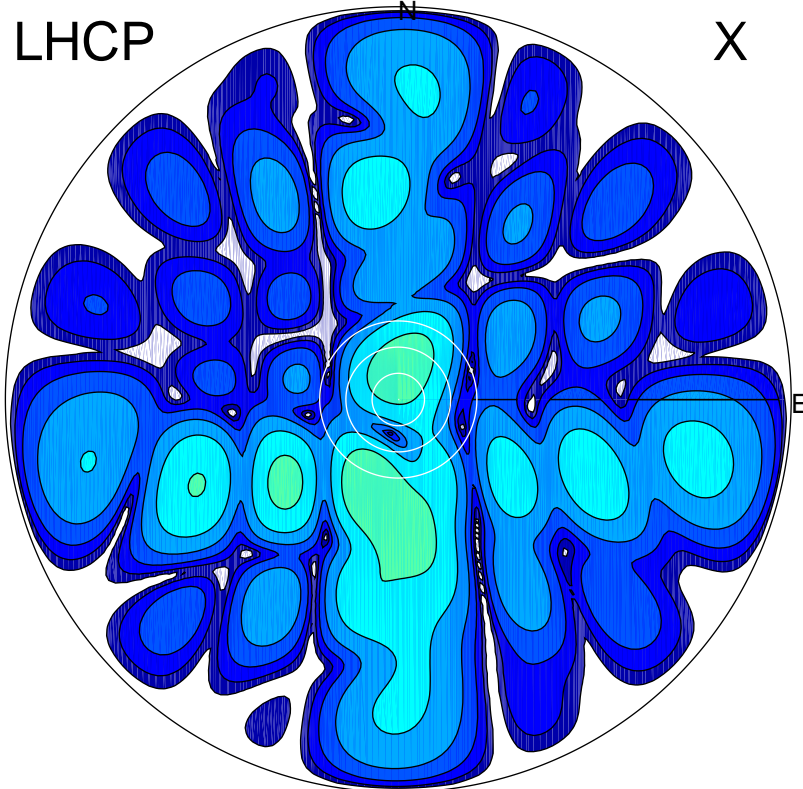


2015-11-13 13:53:45 A2 3.90000000 MHz 727.0 kW



ERP 0.3 MW

Peak gain -3.5 dBi at Az 195 Zen 22
RHCP gain 15.6 dBi
N-S peak -4.7 dBi at Zen -26.4
N-S -3 dB beamwidth 20.8 deg.

ERP 101.2 MW

Peak gain 21.4 dBi at Az 179 Zen 11
LHCP gain -19.4 dBi
N-S peak 21.4 dBi at Zen -10.9
N-S -3 dB beamwidth 17.2 deg.