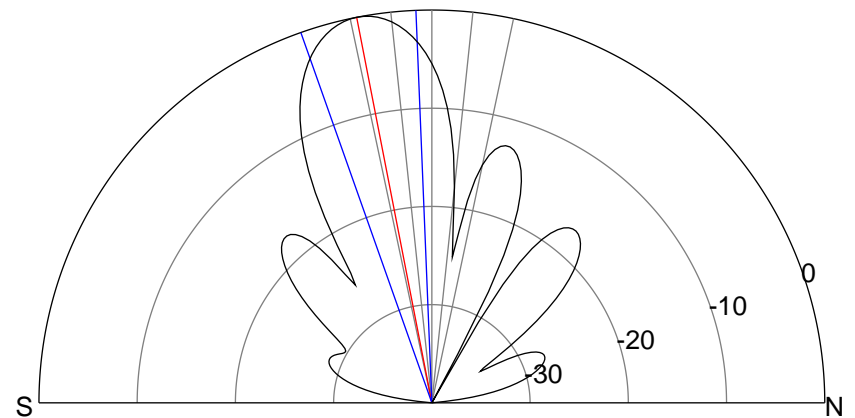
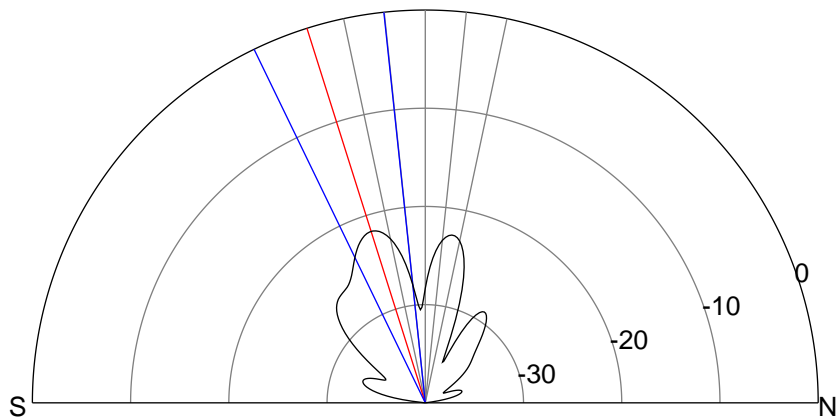
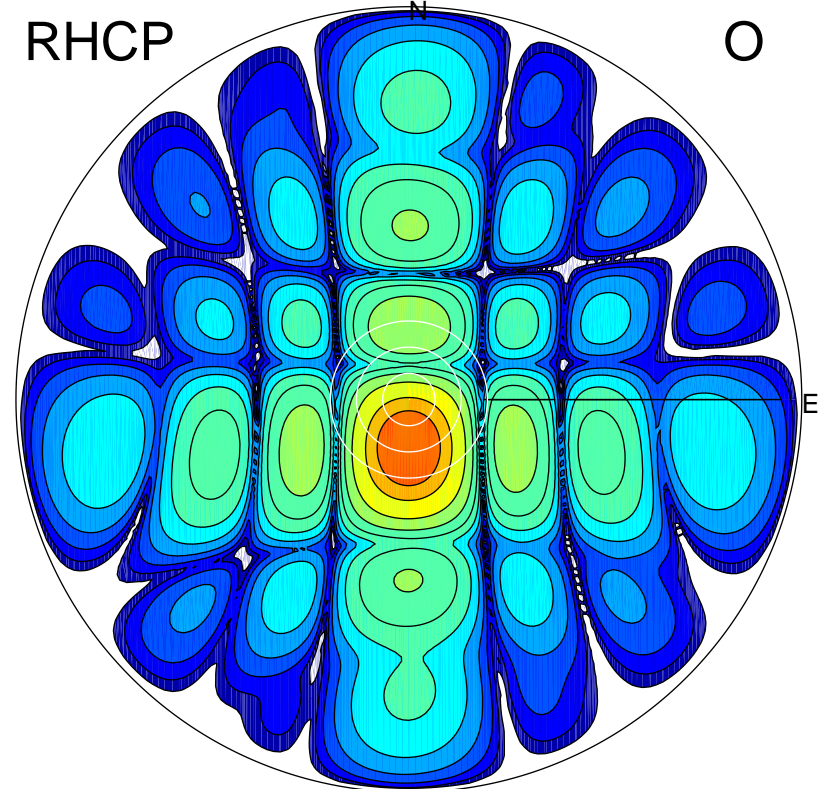
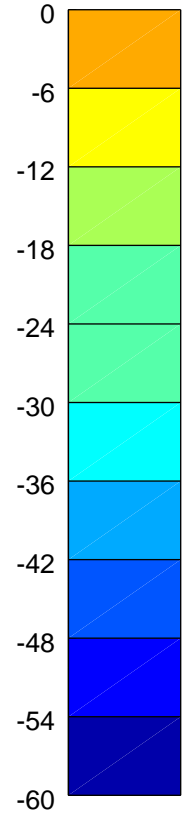
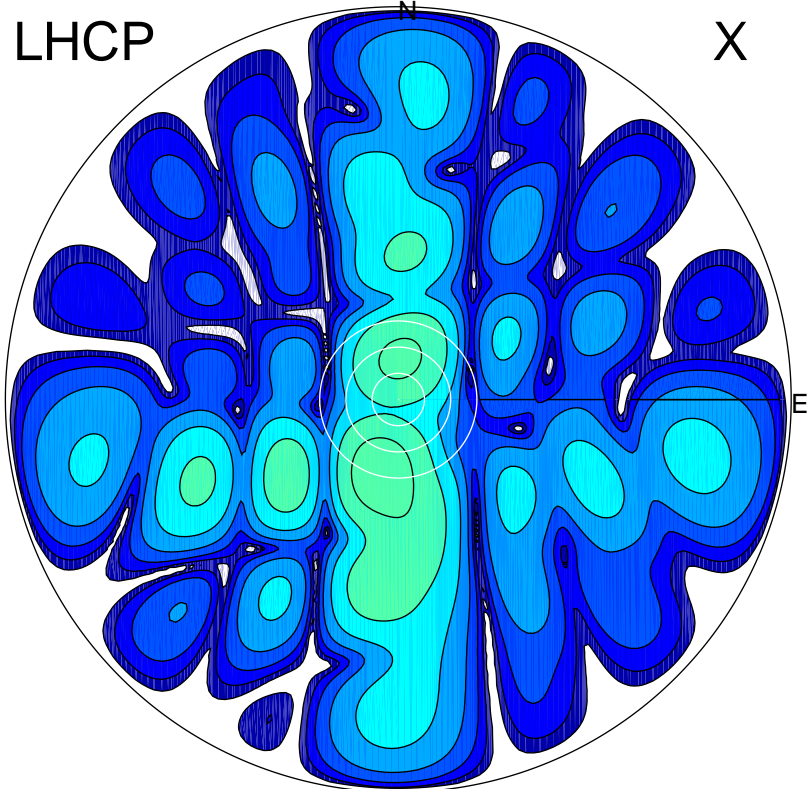


2015-11-13 13:52:45 A2 3.90000000 MHz 520.0 kW



### ERP 0.6 MW

Peak gain 0.8 dBi at Az 194 Zen 17  
RHCP gain 19.3 dBi  
N-S peak -0.3 dBi at Zen -17.5  
N-S -3 dB beamwidth 19.8 deg.

### ERP 71.4 MW

Peak gain 21.4 dBi at Az 179 Zen 11  
LHCP gain -2.2 dBi  
N-S peak 21.4 dBi at Zen -11.0  
N-S -3 dB beamwidth 17.2 deg.