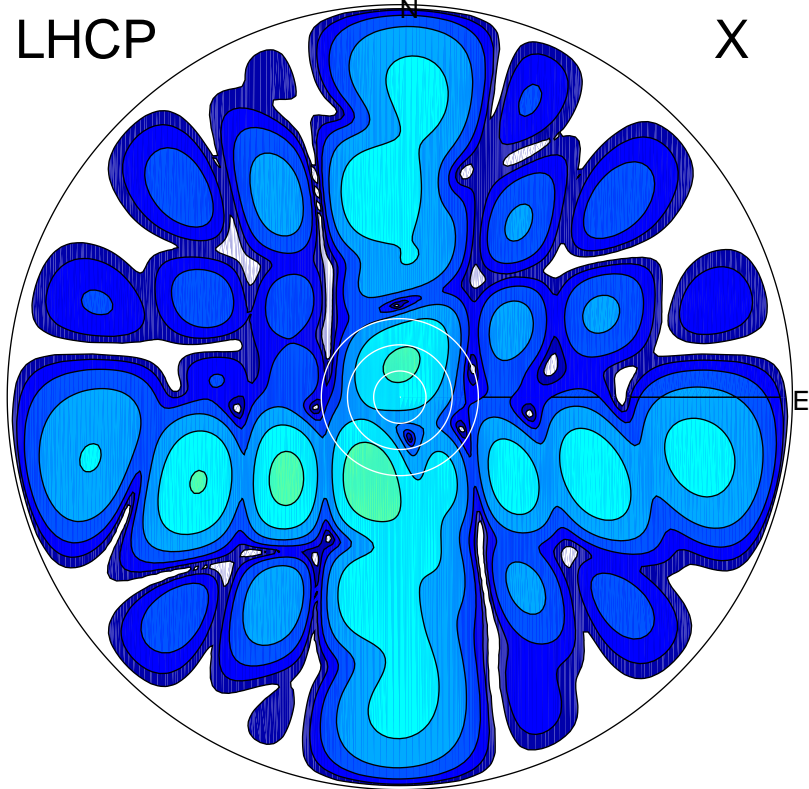


2015-11-13 13:50:10 A2 3.90000000 MHz 733.0 kW

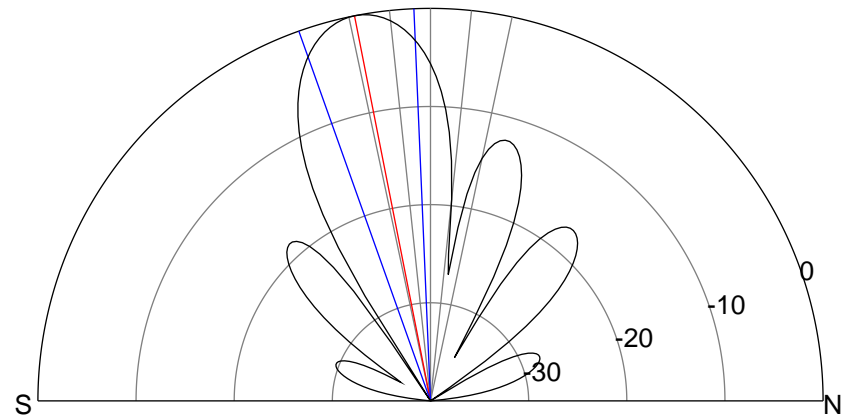
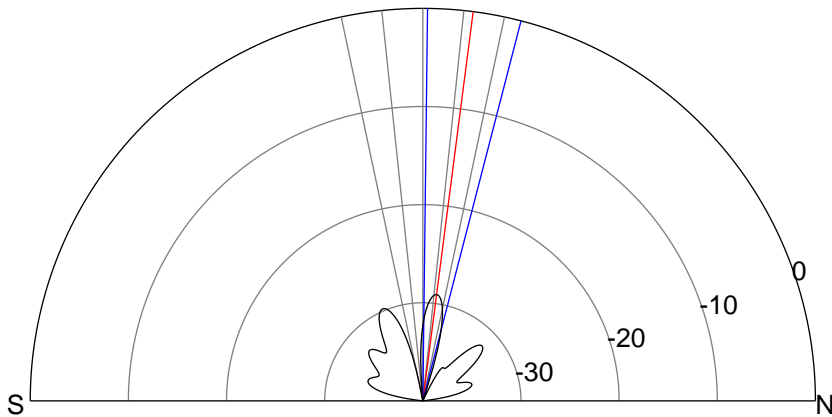
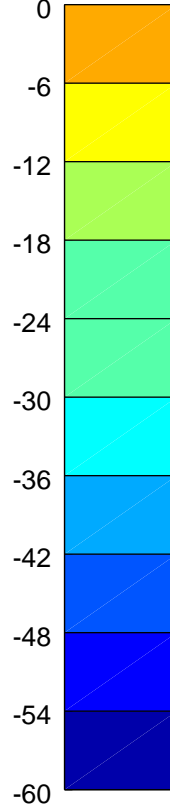
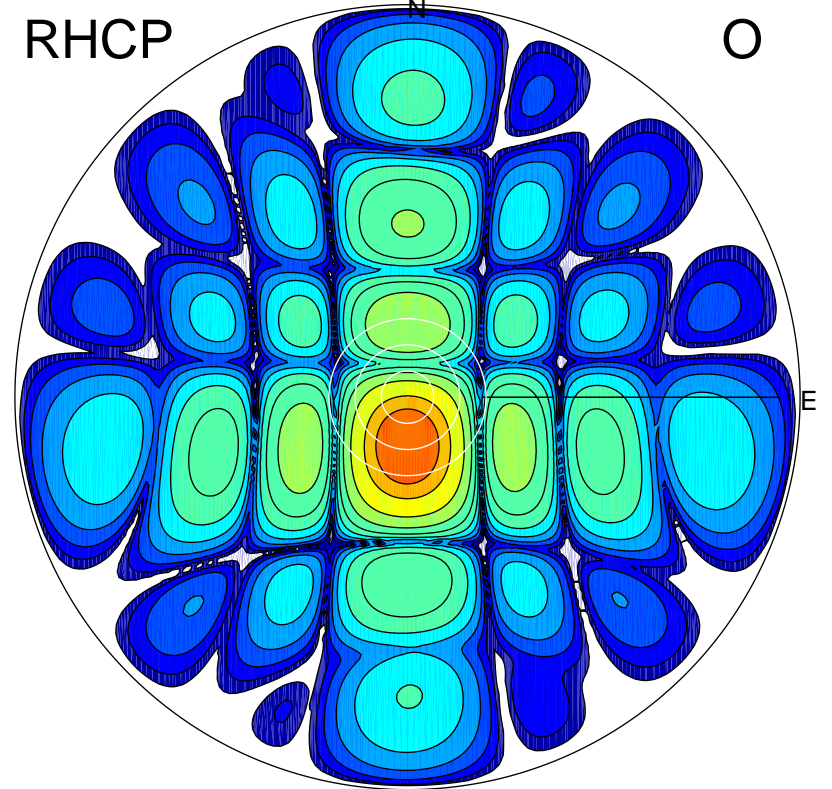
LHCP

X



RHCP

O



### ERP 0.3 MW

Peak gain -4.3 dBi at Az 199 Zen 21  
RHCP gain 15.9 dBi  
N-S peak -7.6 dBi at Zen 7.4  
N-S -3 dB beamwidth 13.8 deg.

### ERP 102.0 MW

Peak gain 21.4 dBi at Az 178 Zen 11  
LHCP gain -18.5 dBi  
N-S peak 21.4 dBi at Zen -11.2  
N-S -3 dB beamwidth 17.2 deg.