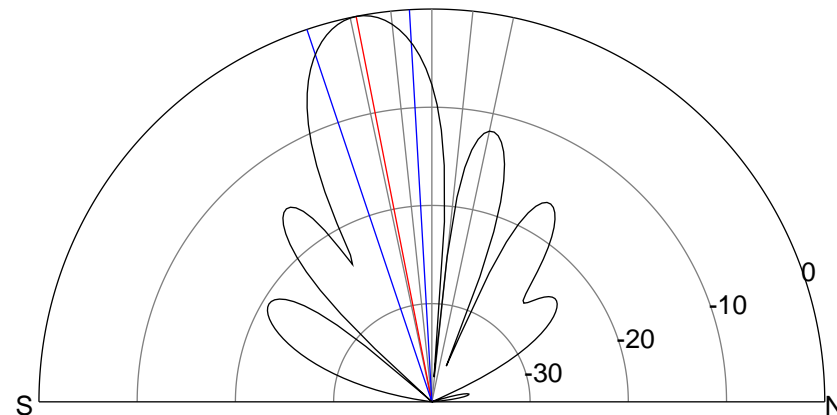
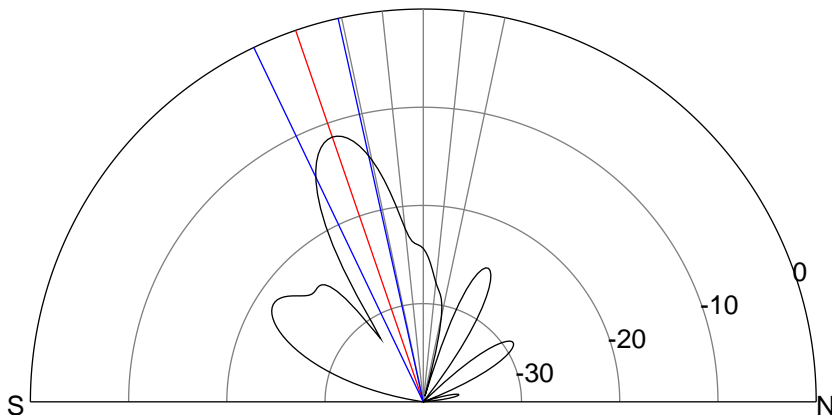
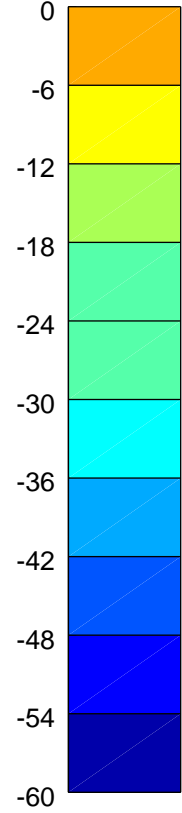
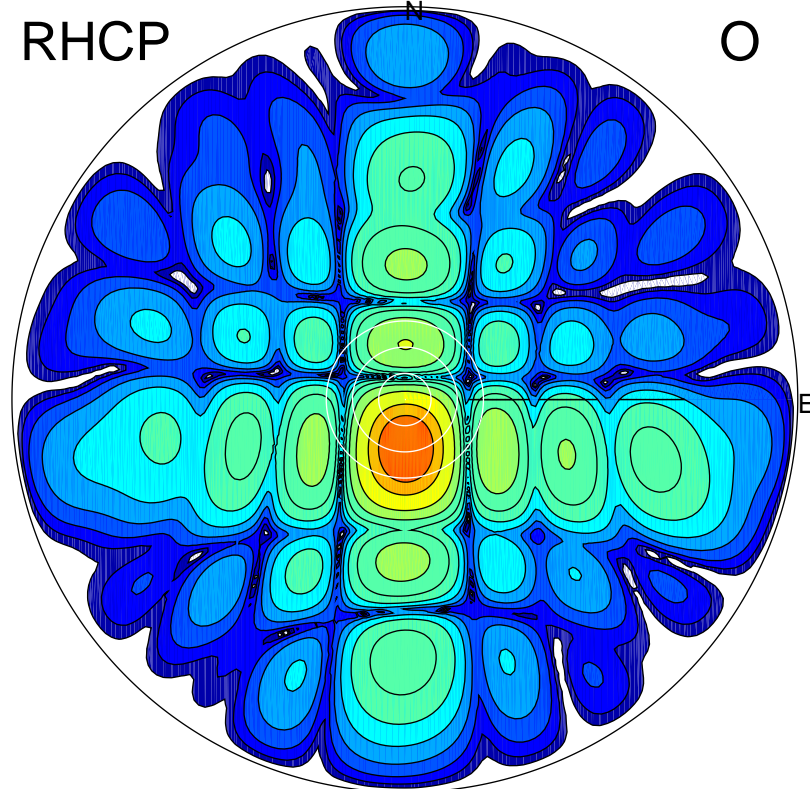
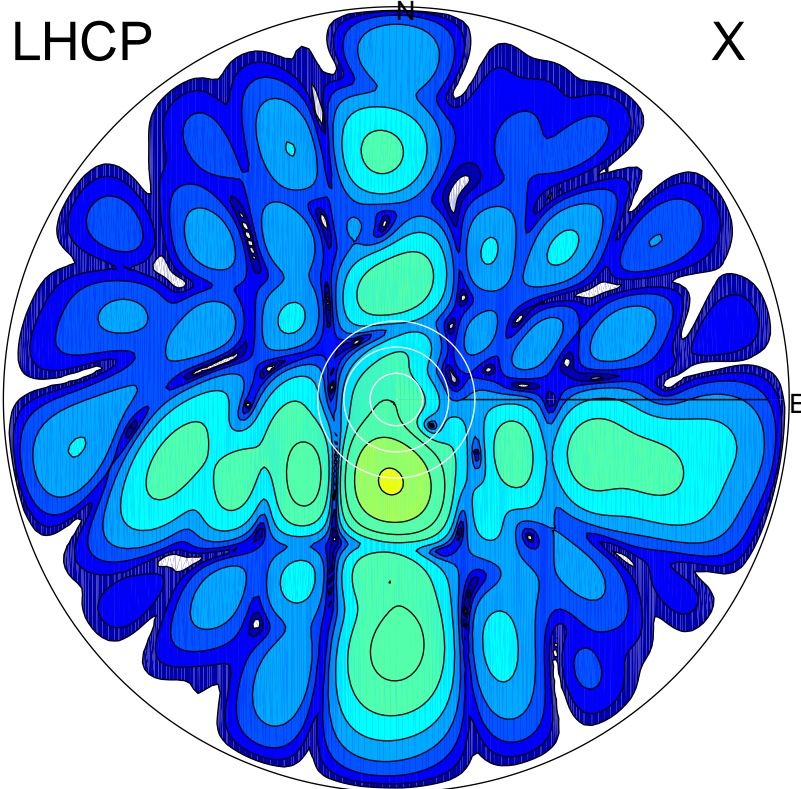


2015-11-13 13:48:20 A2 4.54400000 MHz 779.0 kW



ERP 9.3 MW

Peak gain 10.8 dBi at Az 184 Zen 19
RHCP gain 19.0 dBi
N-S peak 10.7 dBi at Zen -19.0
N-S -3 dB beamwidth 13.0 deg.

ERP 127.6 MW

Peak gain 22.1 dBi at Az 178 Zen 11
LHCP gain 6.1 dBi
N-S peak 22.1 dBi at Zen -11.1
N-S -3 dB beamwidth 15.3 deg.