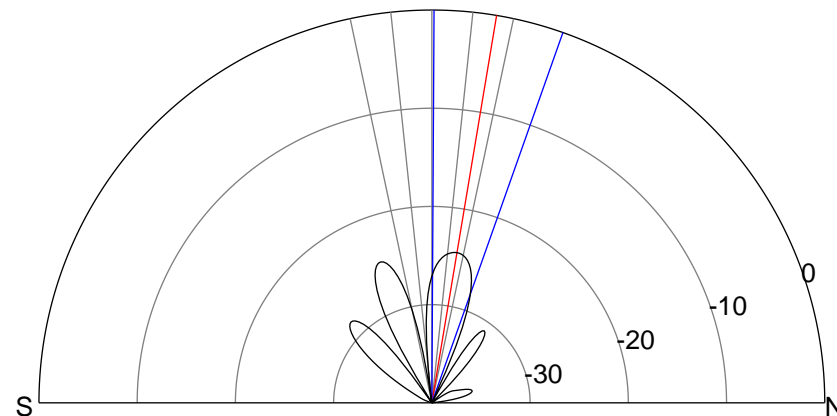
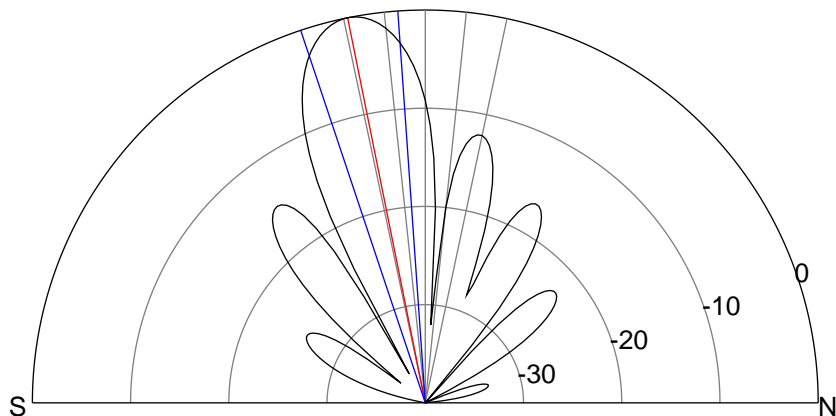
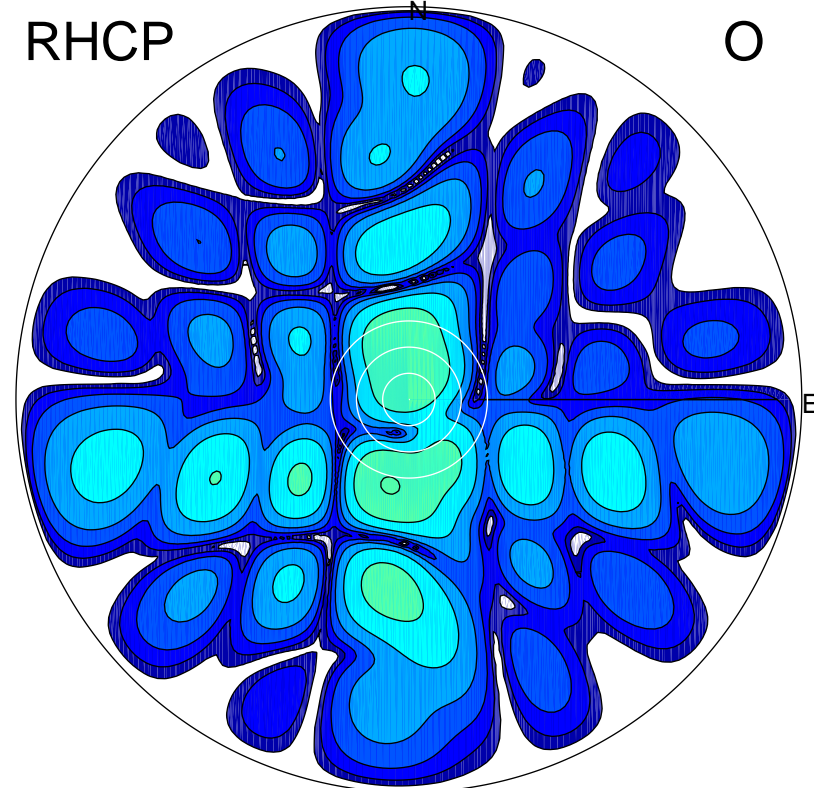
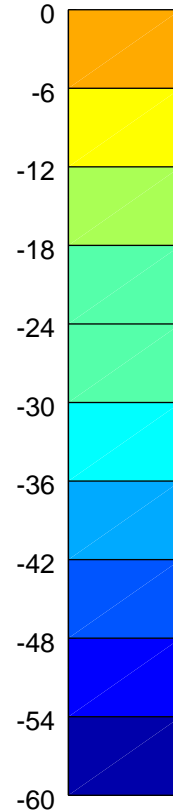
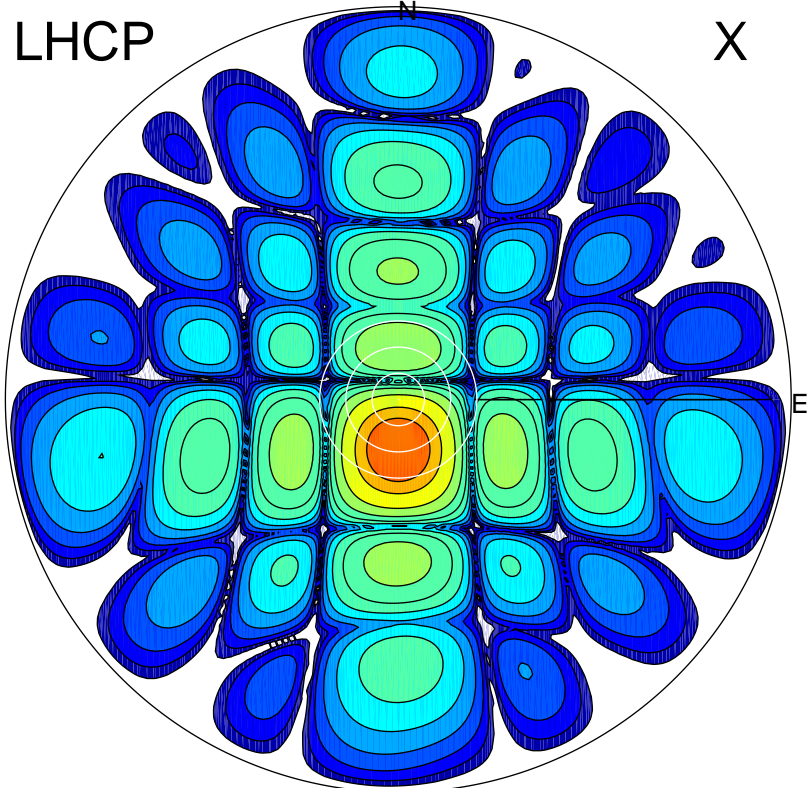


2015-11-12 14:51:20 A2 3.90000000 MHz 785.0 kW



ERP 127.2 MW

Peak gain 22.1 dBi at Az 181 Zen 11
RHCP gain -10.2 dBi
N-S peak 22.1 dBi at Zen -11.4
N-S -3 dB beamwidth 14.5 deg.

ERP 0.5 MW

Peak gain -1.6 dBi at Az 192 Zen 20
LHCP gain 17.5 dBi
N-S peak -2.4 dBi at Zen 9.5
N-S -3 dB beamwidth 19.2 deg.