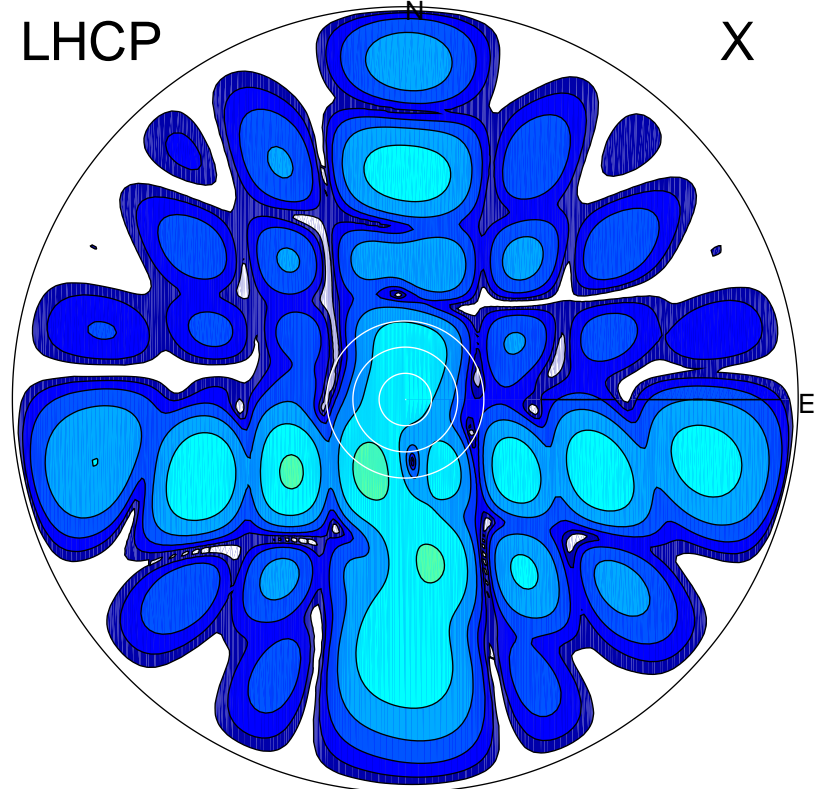


2015-11-12 14:07:25 A2 3.90000000 MHz 825.0 kW

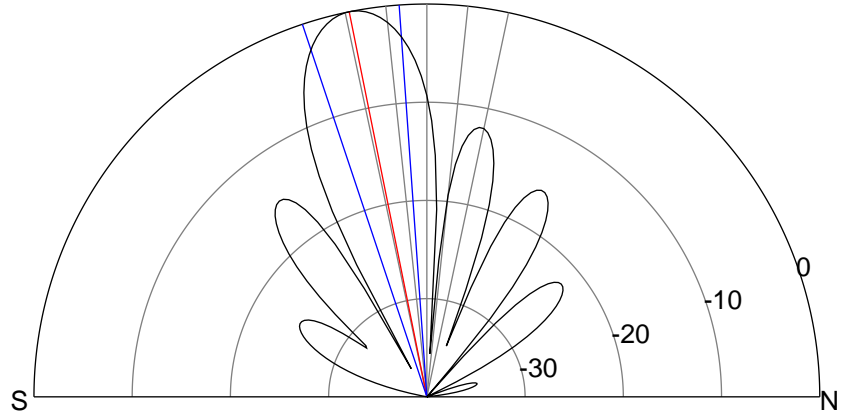
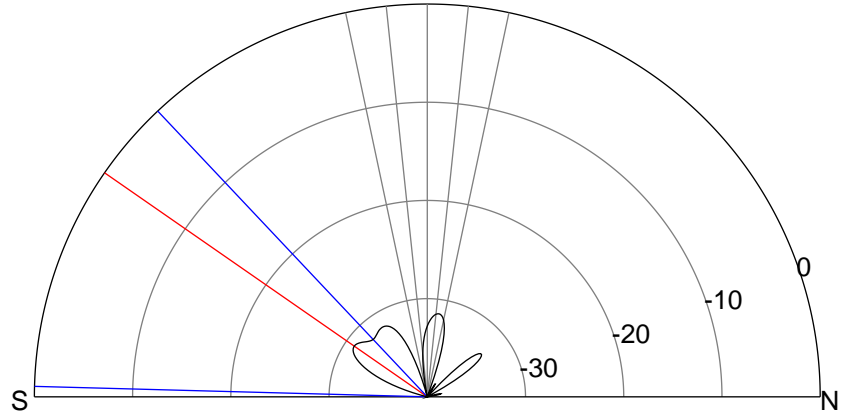
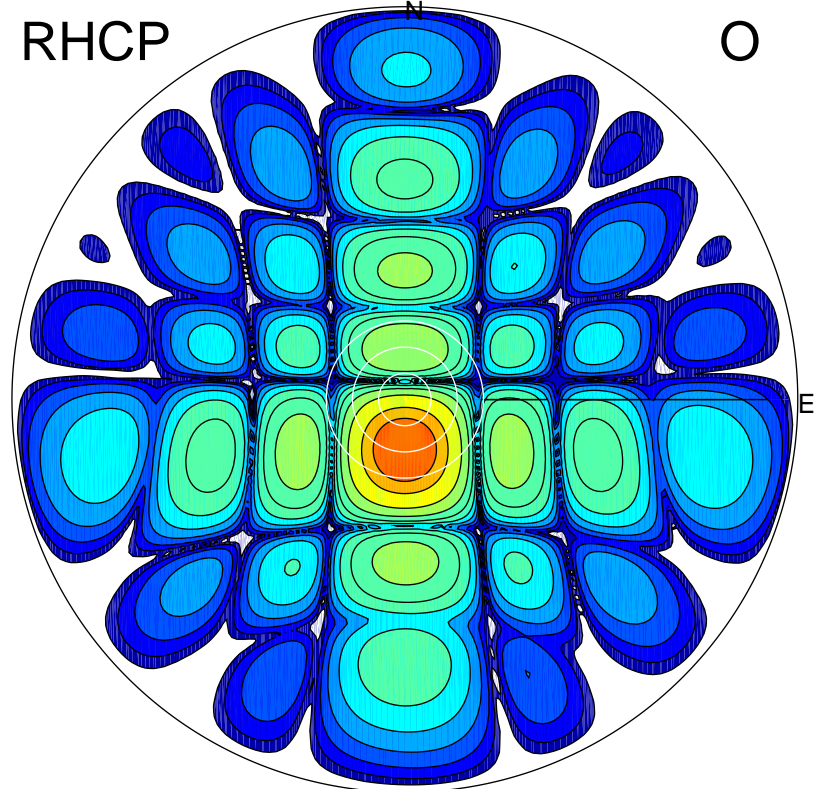
LHCP

X



RHCP

O



ERP 0.2 MW

Peak gain -5.8 dBi at Az 206 Zen 18
RHCP gain 17.4 dBi
N-S peak -8.8 dBi at Zen -55.2
N-S -3 dB beamwidth 45.2 deg.

ERP 134.3 MW

Peak gain 22.1 dBi at Az 179 Zen 11
LHCP gain -18.2 dBi
N-S peak 22.1 dBi at Zen -11.4
N-S -3 dB beamwidth 14.4 deg.