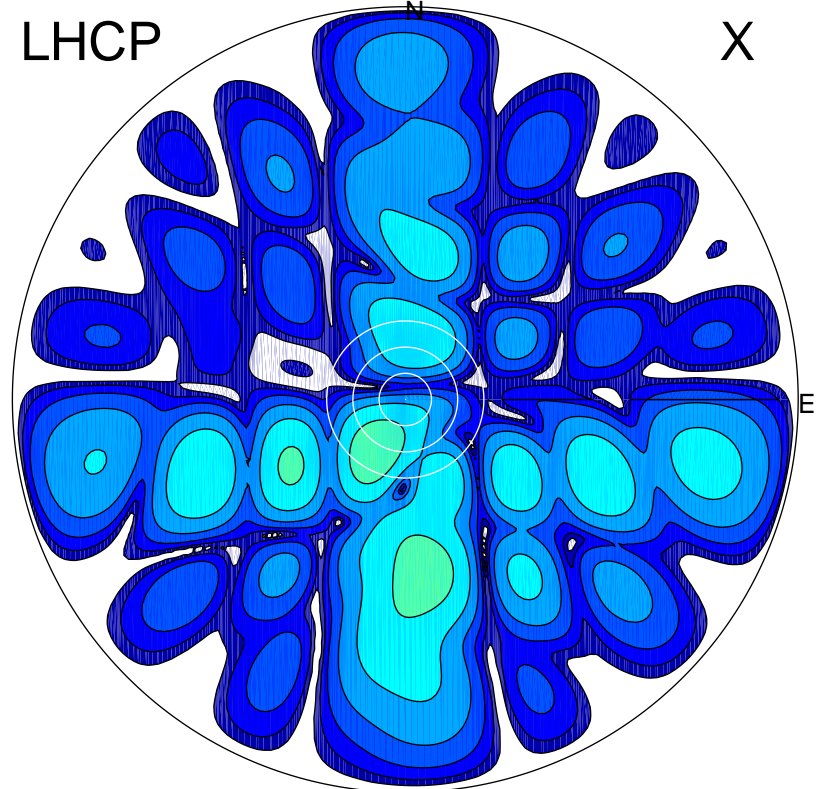


2015-11-11 14:22:55 A2 3.90000000 MHz 846.0 kW

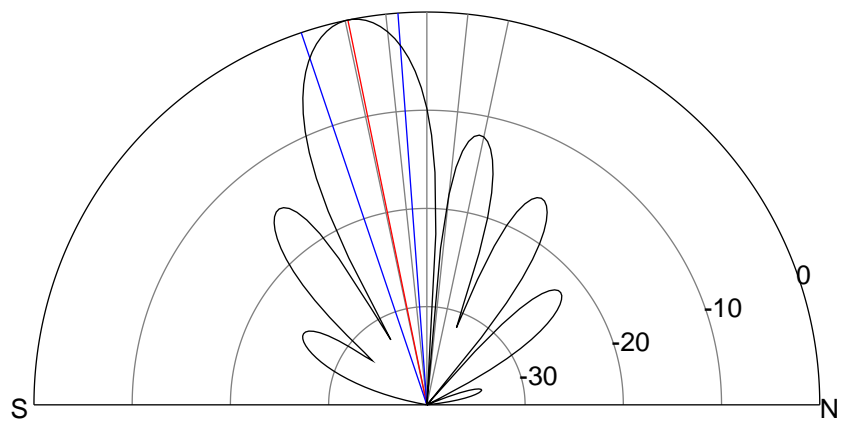
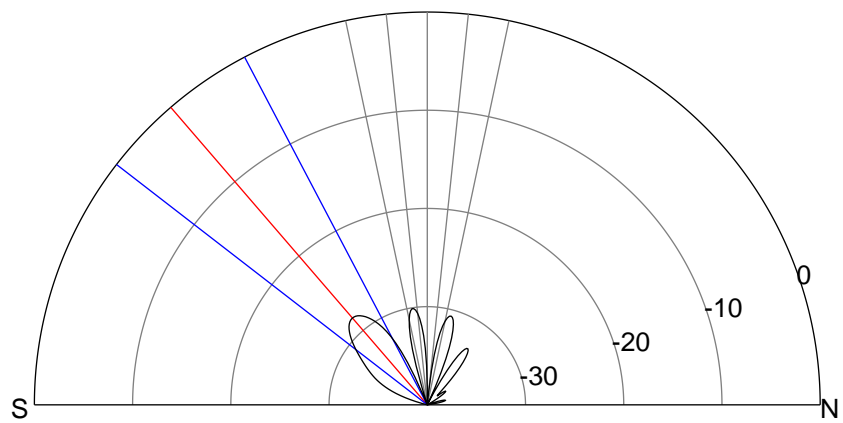
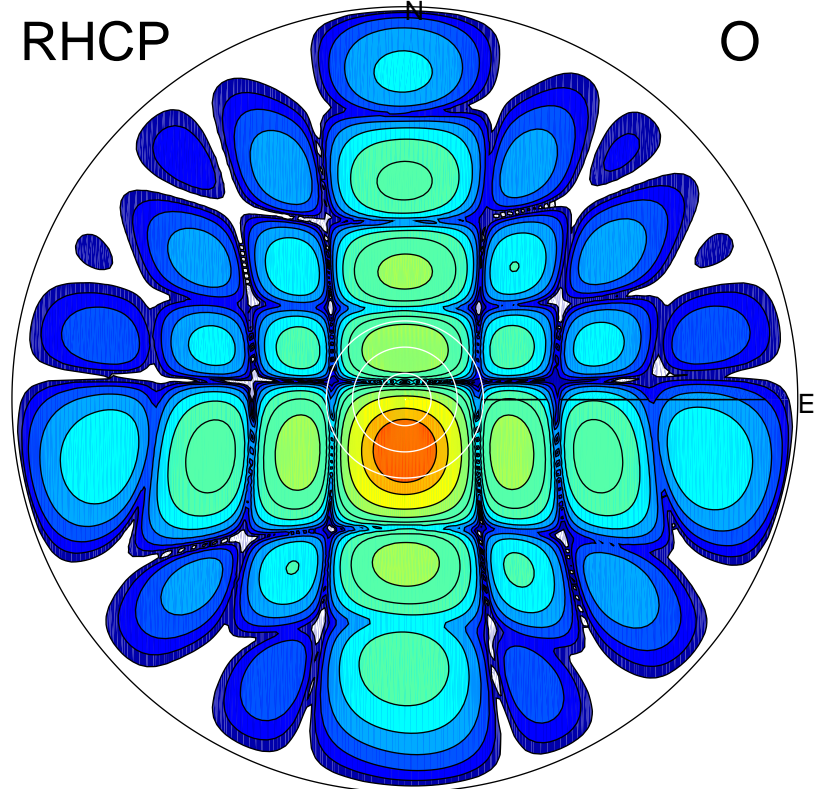
LHCP

X



RHCP

O



### ERP 0.3 MW

Peak gain -4.3 dBi at Az 211 Zen 14  
RHCP gain 19.2 dBi  
N-S peak -6.2 dBi at Zen -40.8  
N-S -3 dB beamwidth 24.6 deg.

### ERP 137.7 MW

Peak gain 22.1 dBi at Az 179 Zen 12  
LHCP gain -9.3 dBi  
N-S peak 22.1 dBi at Zen -11.6  
N-S -3 dB beamwidth 14.4 deg.