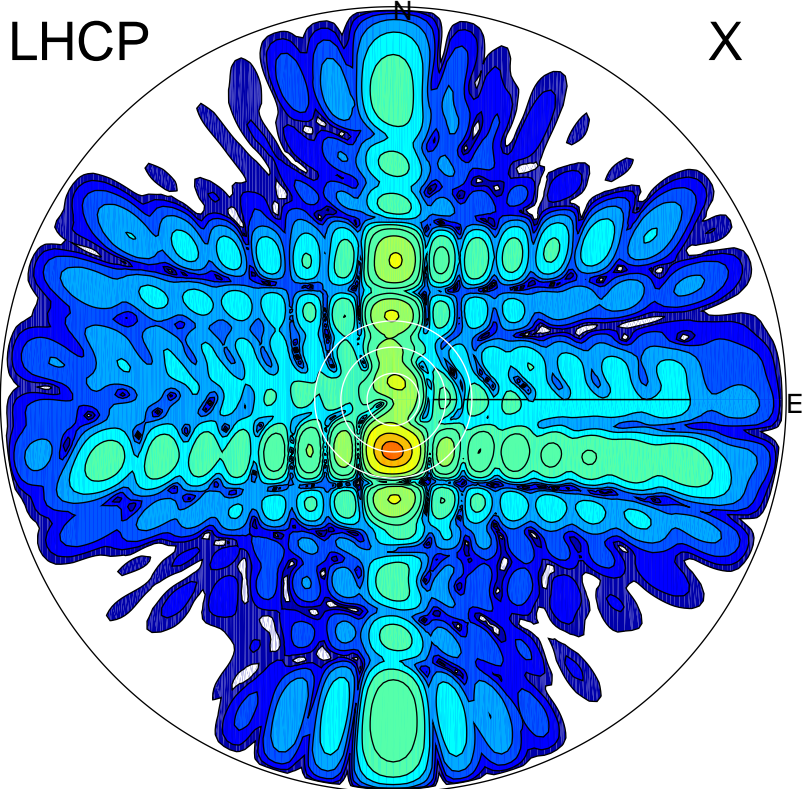


2015-11-03 11:47:20 A1 6.30000000 MHz 832.0 kW

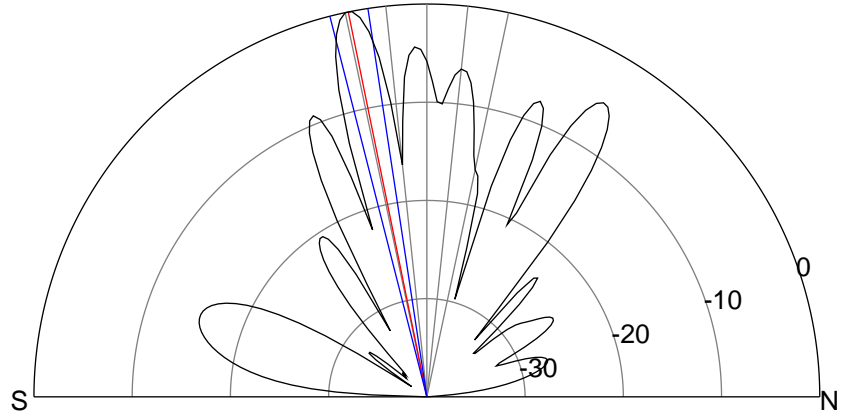
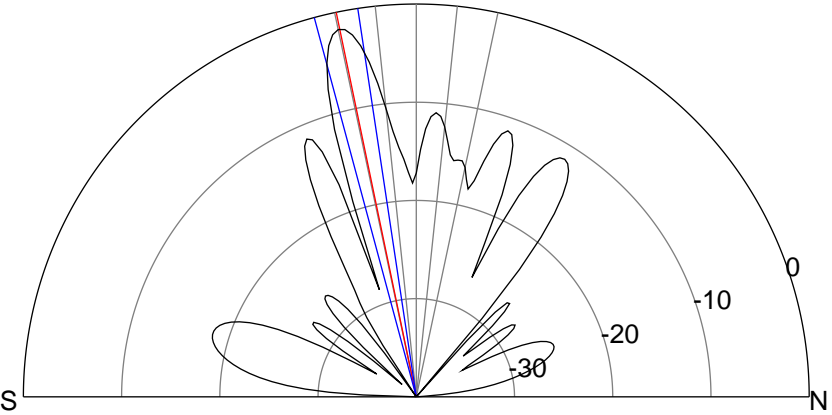
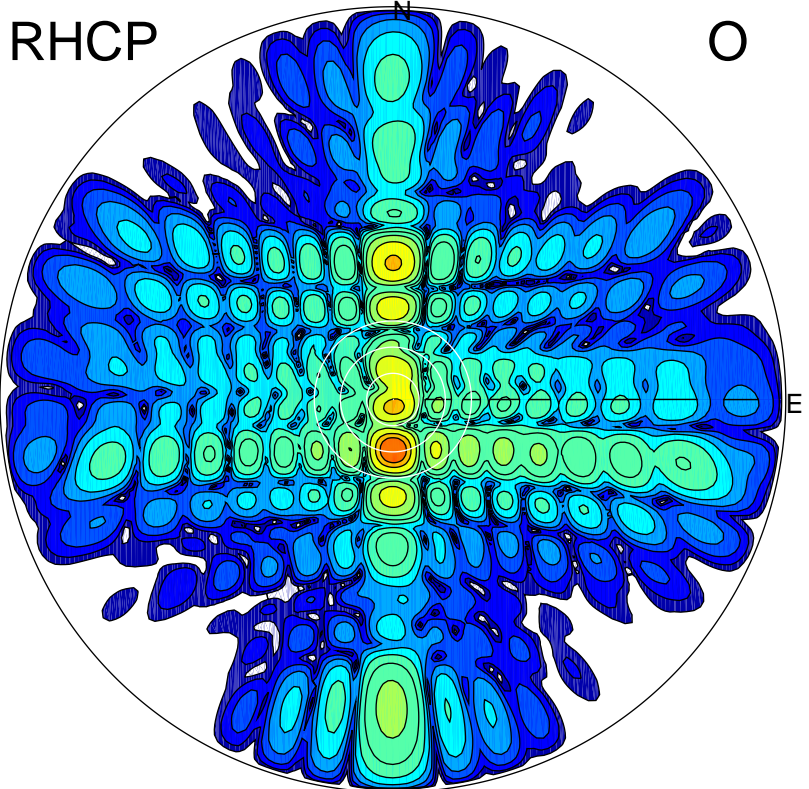
LHCP

X



RHCP

O



ERP 148.1 MW

Peak gain 22.5 dBi at Az 181 Zen 12
RHCP gain 24.2 dBi
N-S peak 22.5 dBi at Zen -11.8
N-S -3 dB beamwidth 6.5 deg.

ERP 221.8 MW

Peak gain 24.3 dBi at Az 179 Zen 12
LHCP gain 22.5 dBi
N-S peak 24.3 dBi at Zen -11.5
N-S -3 dB beamwidth 5.7 deg.