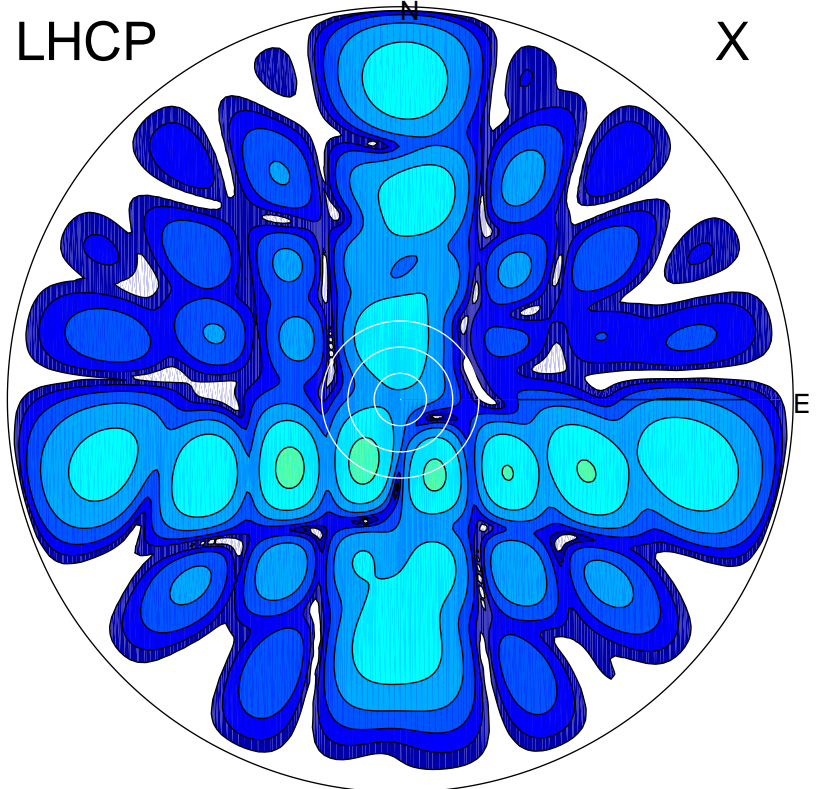
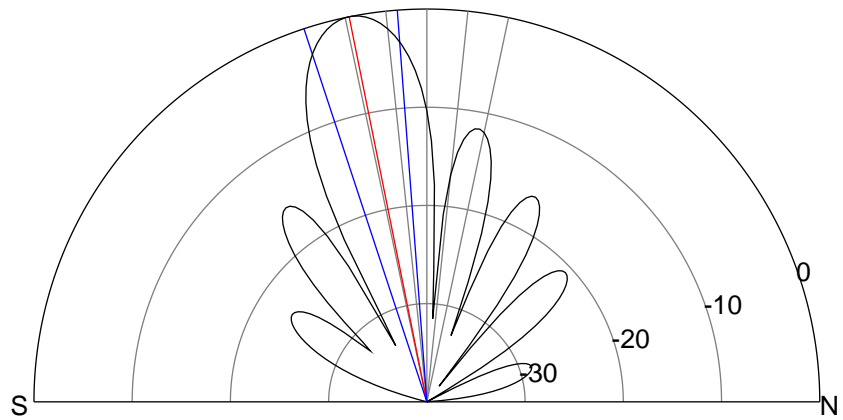
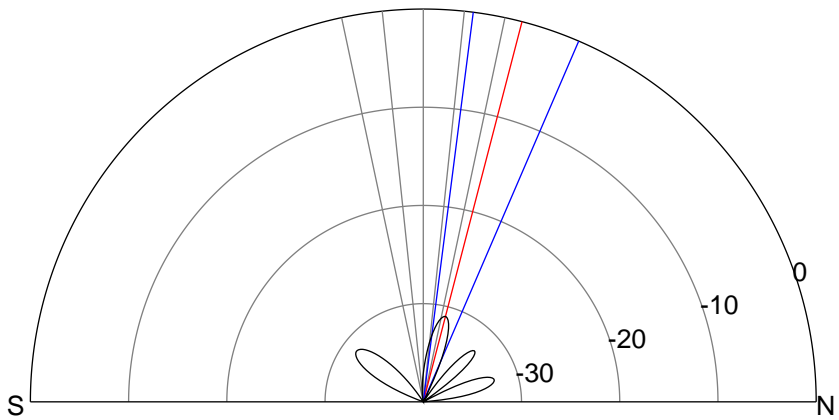
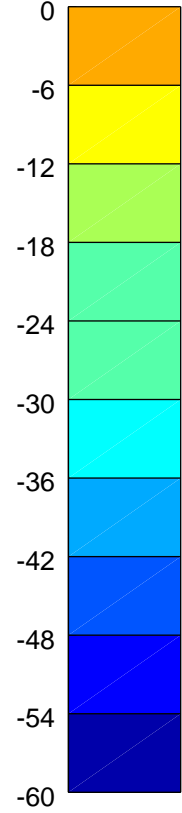
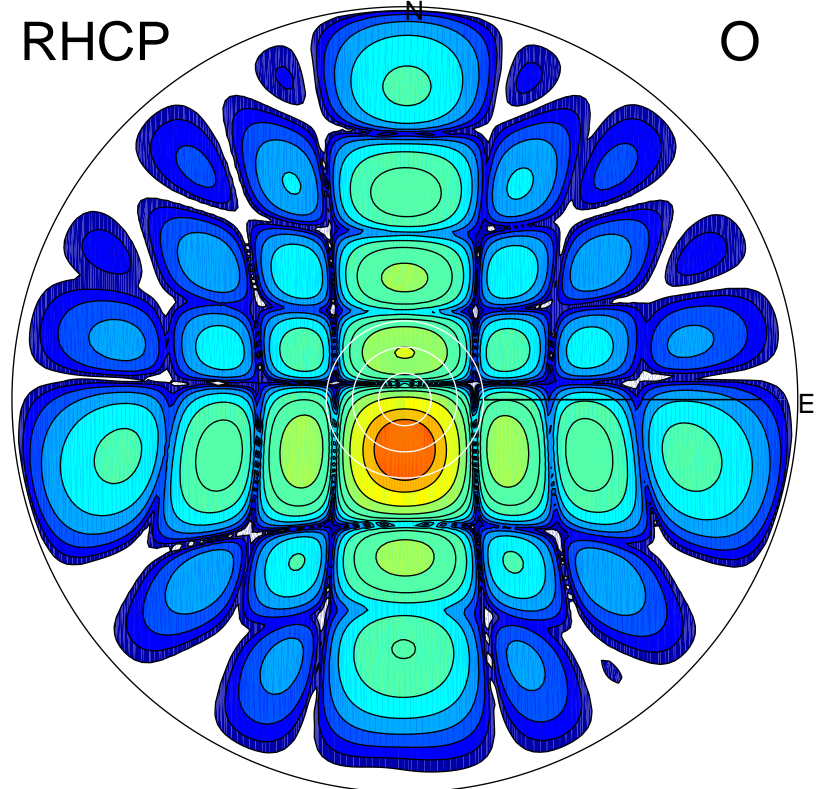


2015-11-02 14:21:53 A2 4.04000000 MHz 863.0 kW

LHCP



RHCP



ERP 0.2 MW

Peak gain -5.8 dBi at Az 210 Zen 17
RHCP gain 17.3 dBi
N-S peak -8.6 dBi at Zen 14.6
N-S -3 dB beamwidth 16.0 deg.

ERP 150.2 MW

Peak gain 22.4 dBi at Az 179 Zen 11
LHCP gain -19.4 dBi
N-S peak 22.4 dBi at Zen -11.4
N-S -3 dB beamwidth 13.9 deg.