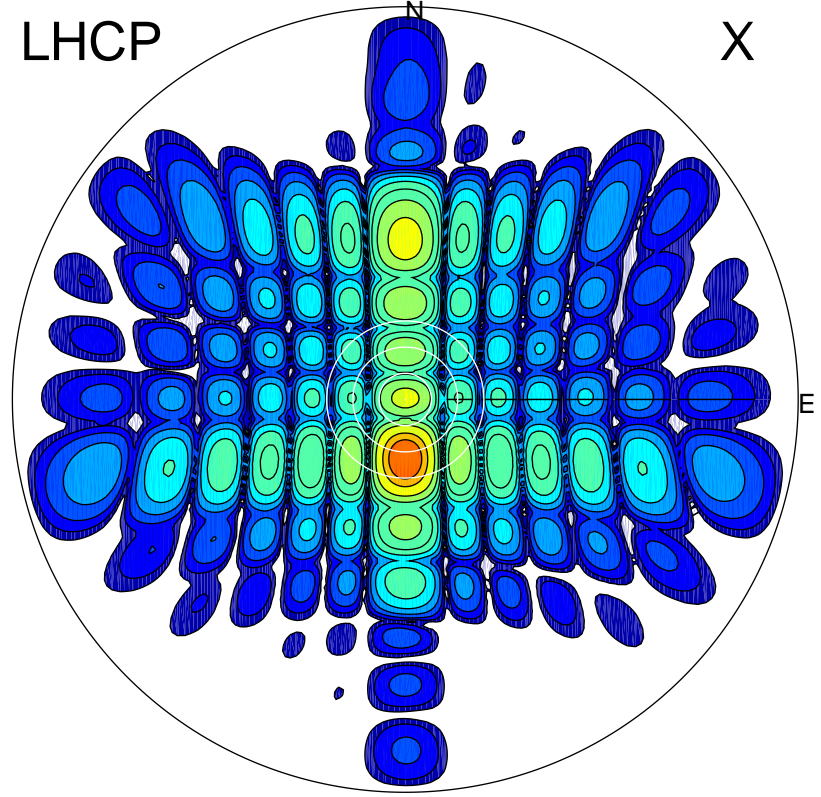


2015-10-31 14:50:25 A1 5.31000000 MHz 776.0 kW

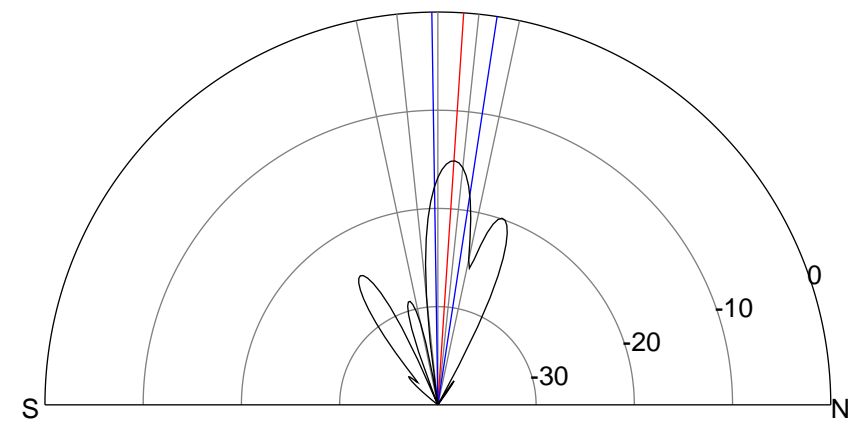
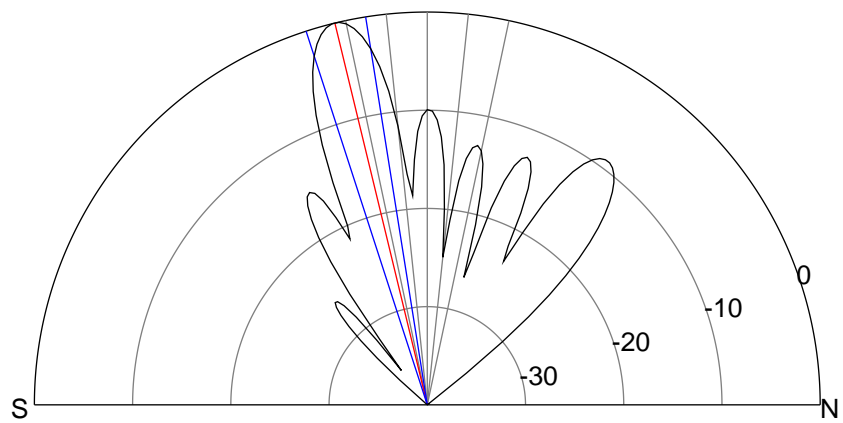
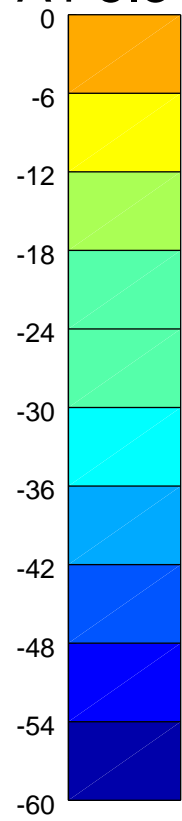
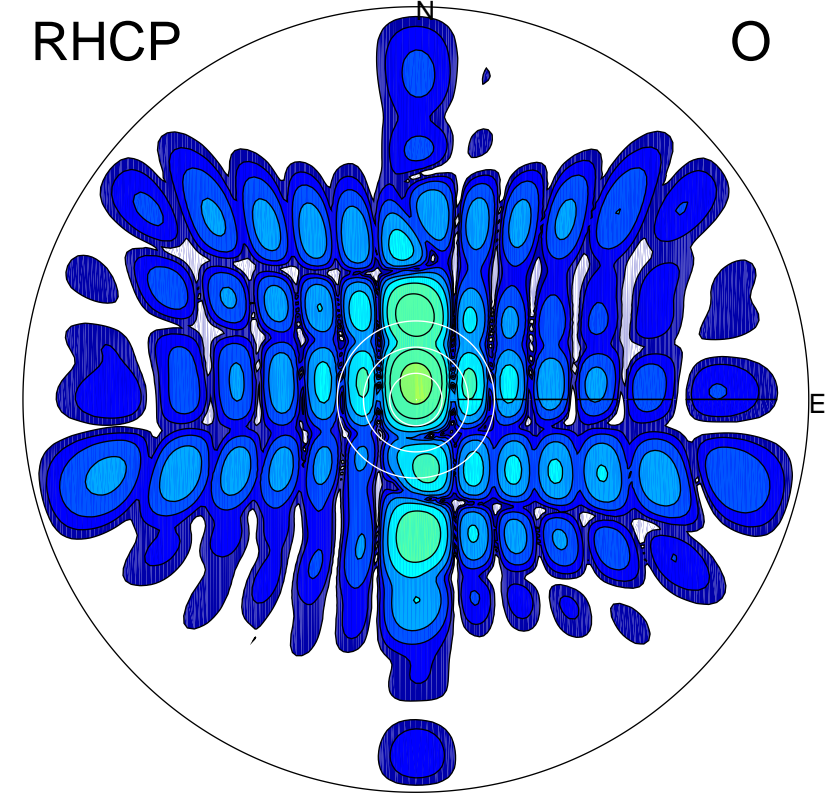
LHCP

X



RHCP

O



### ERP 312.9 MW

Peak gain 26.1 dBi at Az 180 Zen 14  
RHCP gain -3.4 dBi  
N-S peak 26.1 dBi at Zen -13.6  
N-S -3 dB beamwidth 8.9 deg.

### ERP 9.7 MW

Peak gain 11.0 dBi at Az 3 Zen 4  
LHCP gain 10.6 dBi  
N-S peak 11.0 dBi at Zen 3.8  
N-S -3 dB beamwidth 9.6 deg.