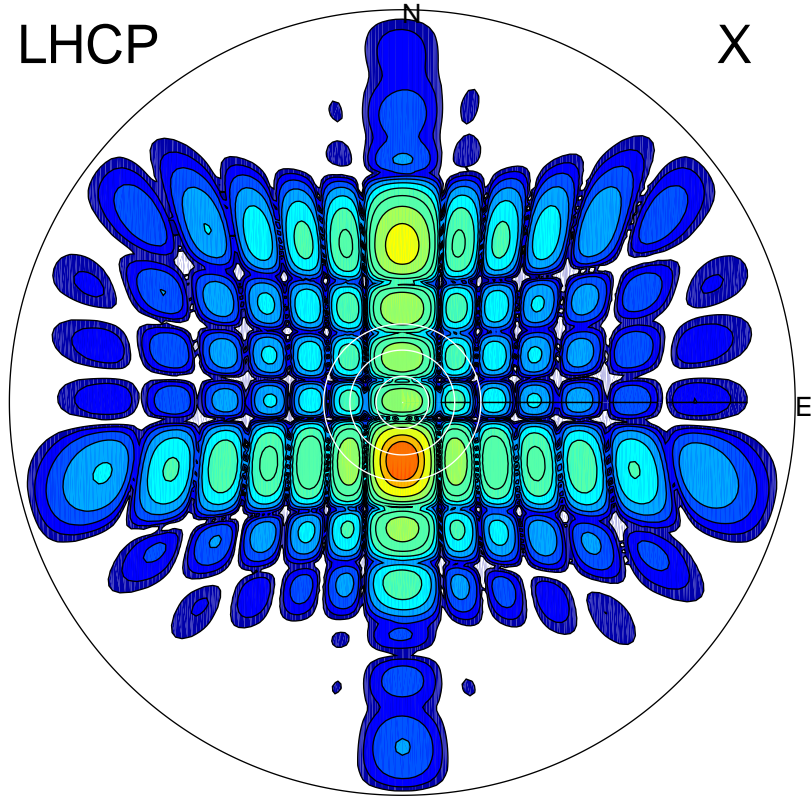


2015-10-31 14:47:45 A1 5.39000000 MHz 734.0 kW

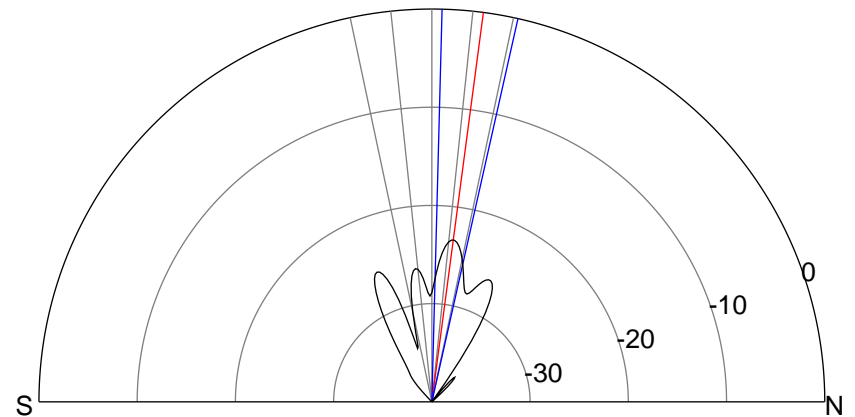
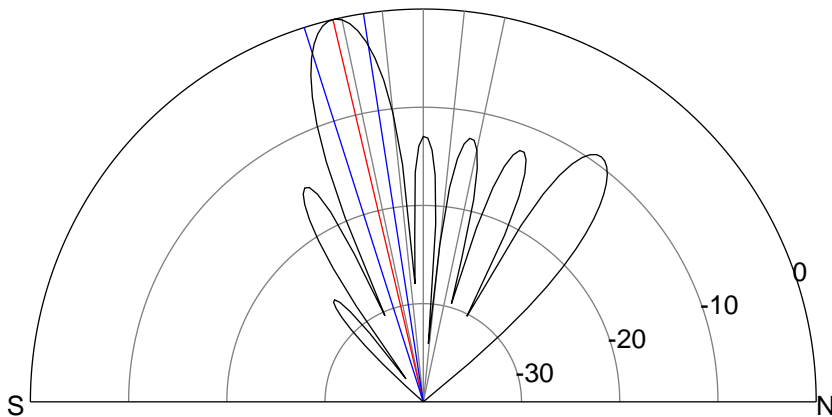
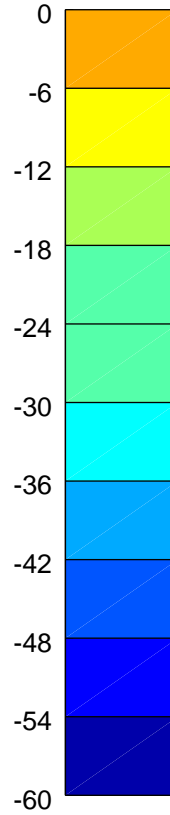
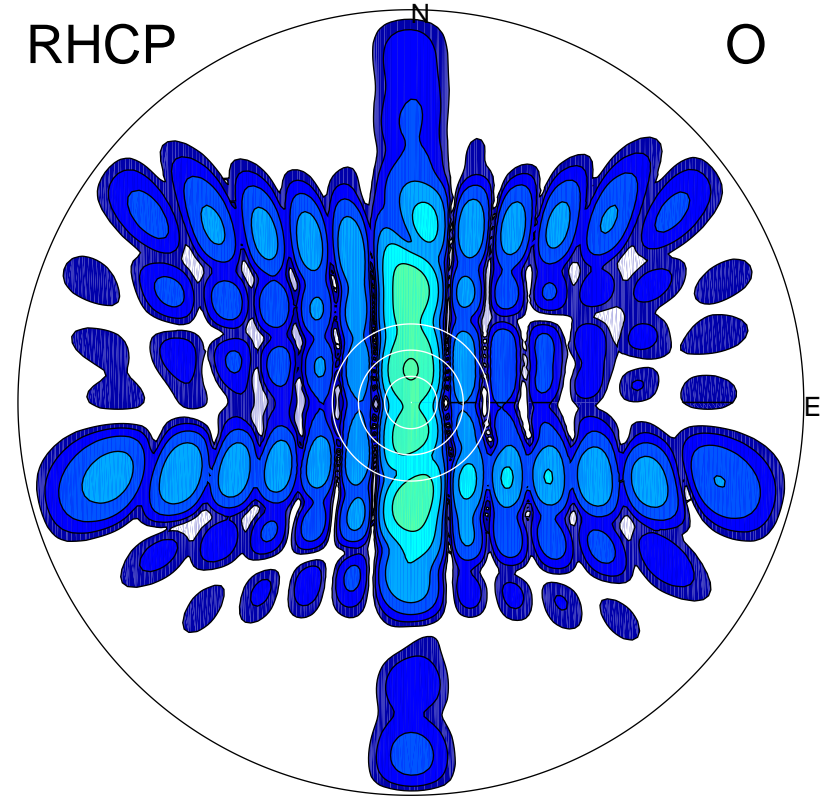
LHCP

X



RHCP

O



### ERP 321.0 MW

Peak gain 26.4 dBi at Az 180 Zen 13  
RHCP gain -6.2 dBi  
N-S peak 26.4 dBi at Zen -13.3  
N-S -3 dB beamwidth 8.9 deg.

### ERP 1.5 MW

Peak gain 3.0 dBi at Az 359 Zen 8  
LHCP gain 11.4 dBi  
N-S peak 3.0 dBi at Zen 7.5  
N-S -3 dB beamwidth 11.2 deg.