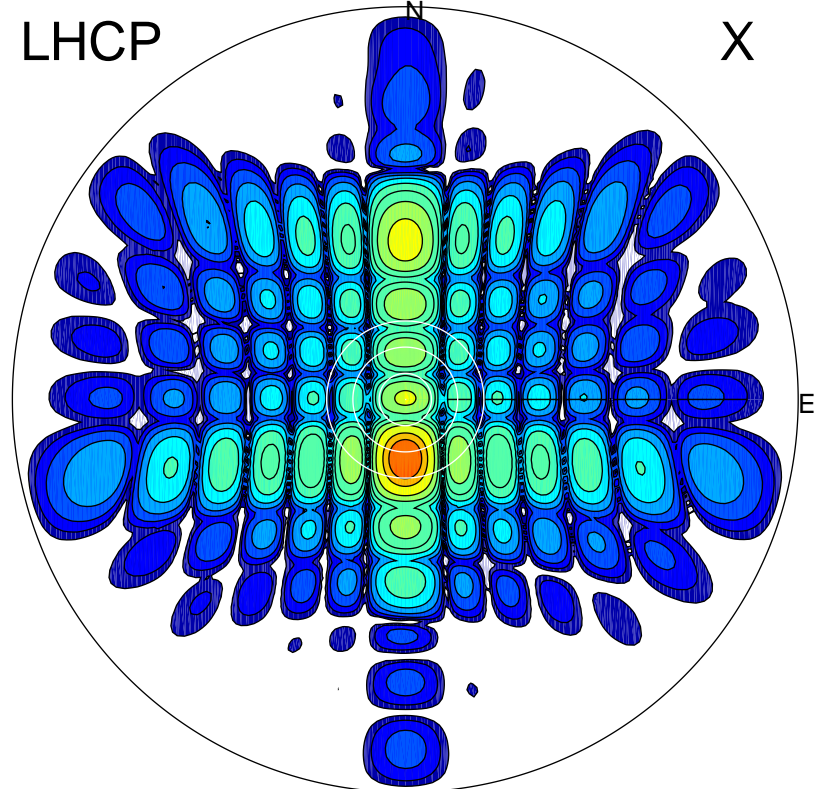


2015-10-31 14:32:25 A1 5.34000000 MHz 750.0 kW

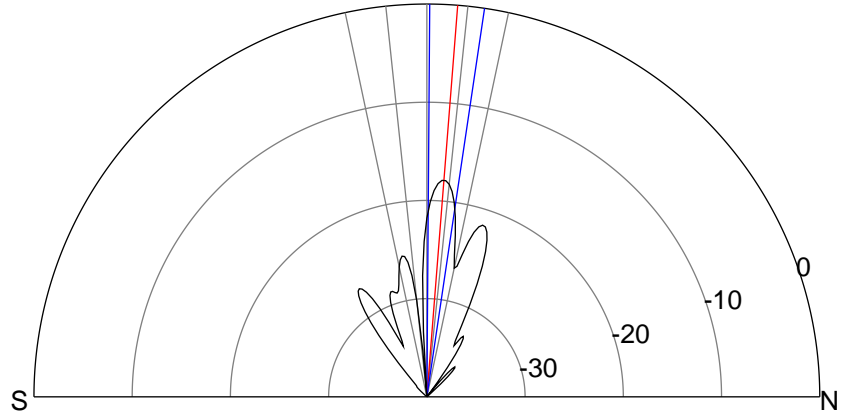
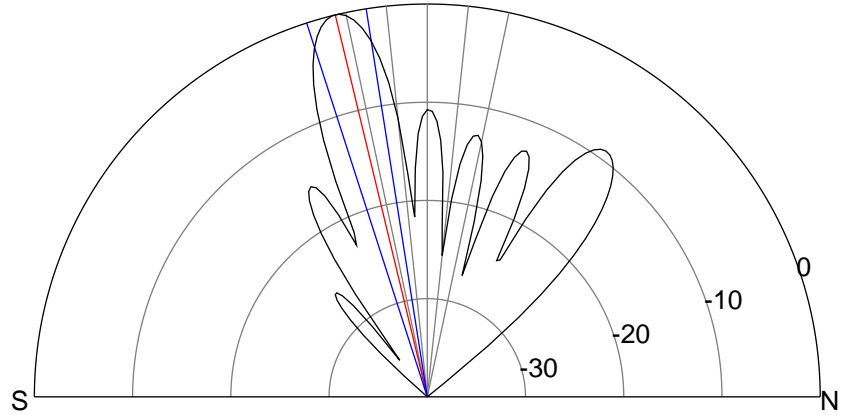
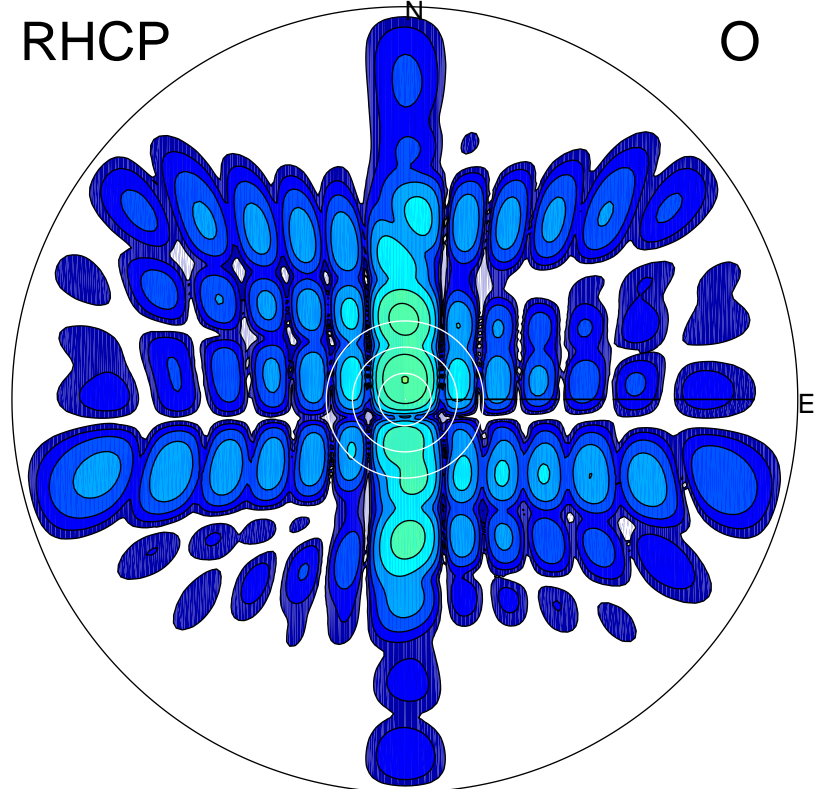
LHCP

X



RHCP

O



ERP 312.9 MW

Peak gain 26.2 dBi at Az 180 Zen 14
RHCP gain -2.0 dBi
N-S peak 26.2 dBi at Zen -13.5
N-S -3 dB beamwidth 8.9 deg.

ERP 5.1 MW

Peak gain 8.3 dBi at Az 1 Zen 5
LHCP gain 3.6 dBi
N-S peak 8.3 dBi at Zen 4.5
N-S -3 dB beamwidth 8.0 deg.