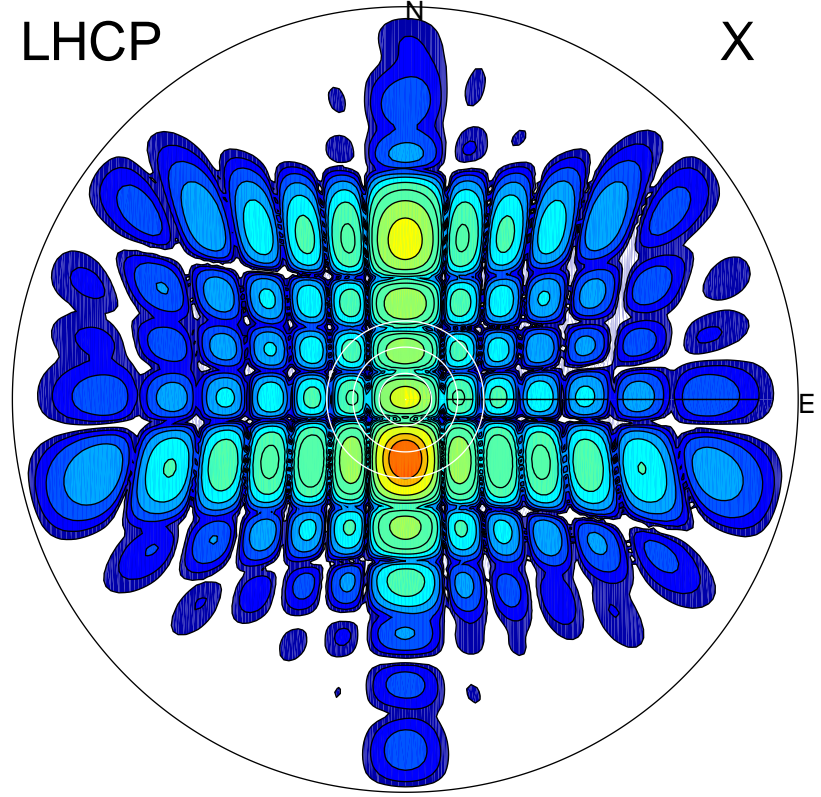


2015-10-31 14:31:45 A1 5.32000000 MHz 766.0 kW

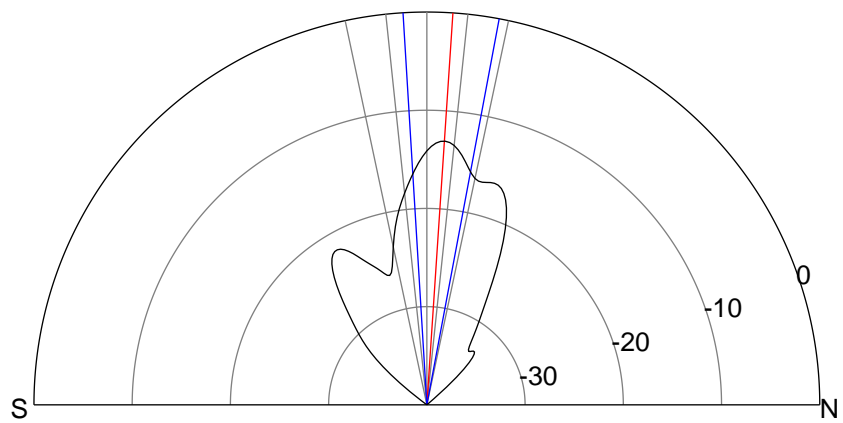
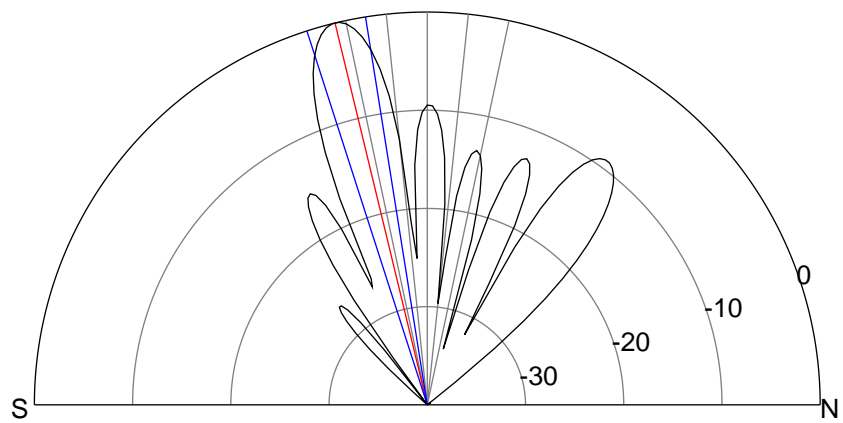
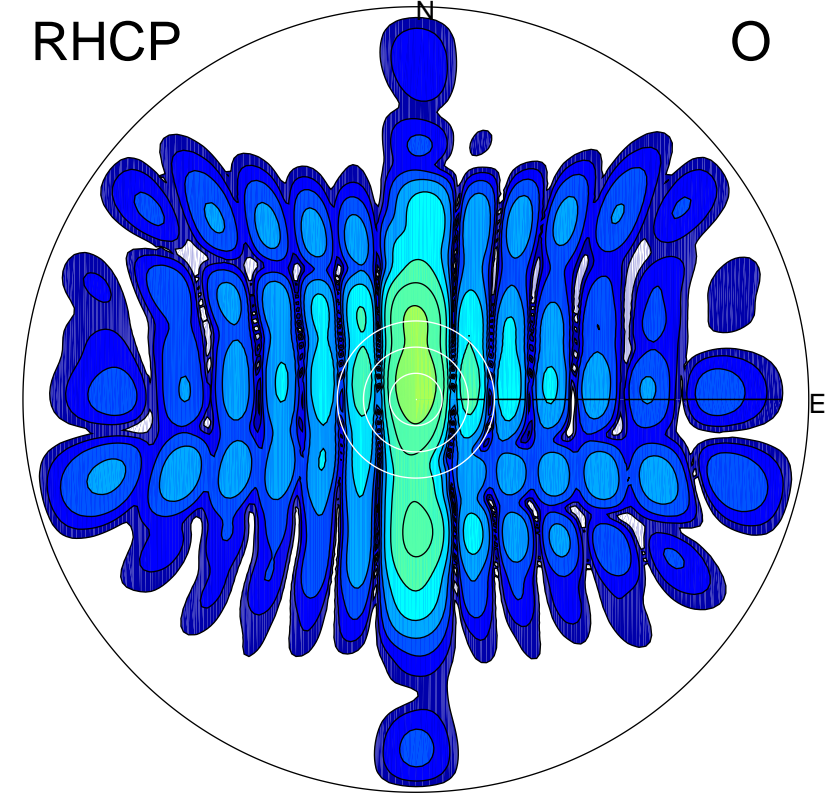
LHCP

X



RHCP

O



### ERP 300.4 MW

Peak gain 25.9 dBi at Az 180 Zen 14  
RHCP gain 0.5 dBi  
N-S peak 26.0 dBi at Zen -13.6  
N-S -3 dB beamwidth 8.8 deg.

### ERP 14.7 MW

Peak gain 12.8 dBi at Az 0 Zen 4  
LHCP gain 11.2 dBi  
N-S peak 12.8 dBi at Zen 3.8  
N-S -3 dB beamwidth 14.1 deg.