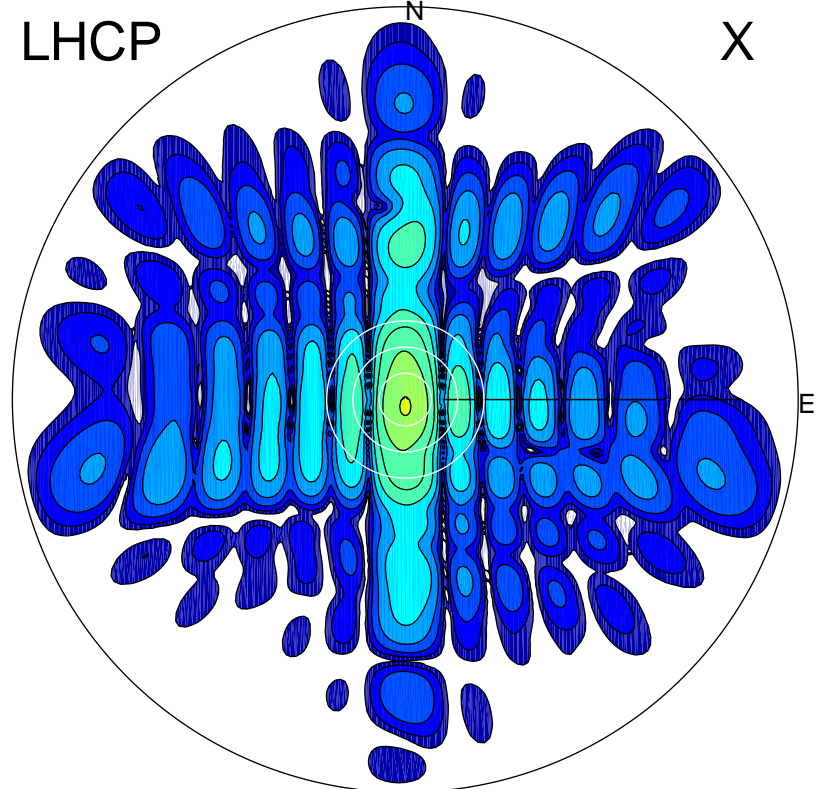


2015-10-31 14:27:45 A1 5.33000000 MHz 717.0 kW

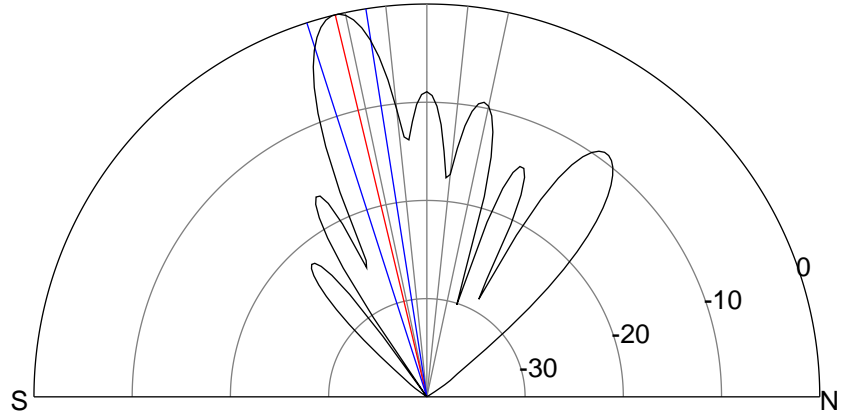
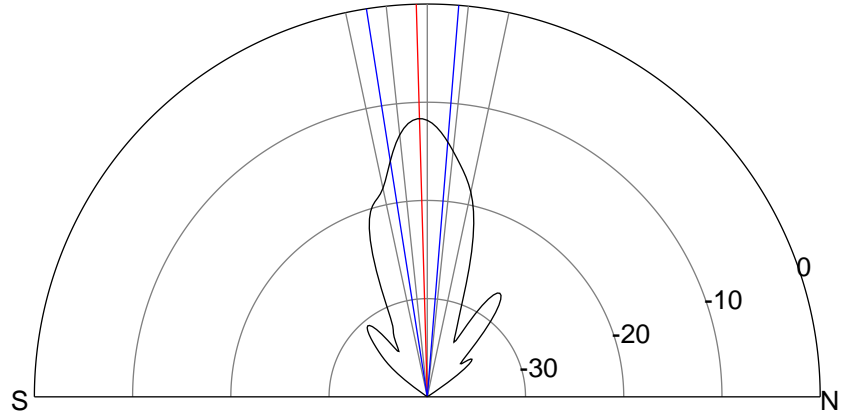
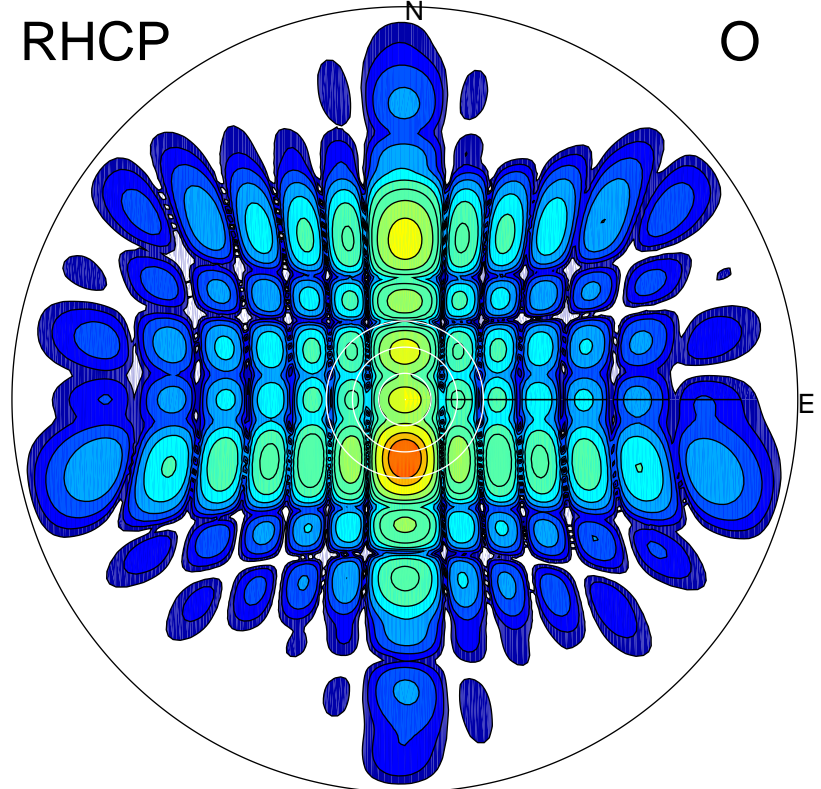
LHCP

X



RHCP

O



ERP 18.2 MW

Peak gain 14.0 dBi at Az 180 Zen 2
RHCP gain 15.5 dBi
N-S peak 14.0 dBi at Zen -1.6
N-S -3 dB beamwidth 13.5 deg.

ERP 266.4 MW

Peak gain 25.7 dBi at Az 180 Zen 13
LHCP gain 6.9 dBi
N-S peak 25.7 dBi at Zen -13.5
N-S -3 dB beamwidth 8.9 deg.