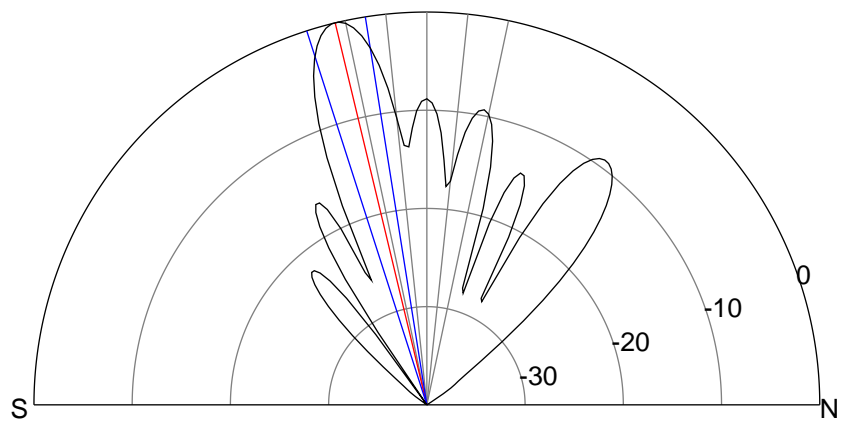
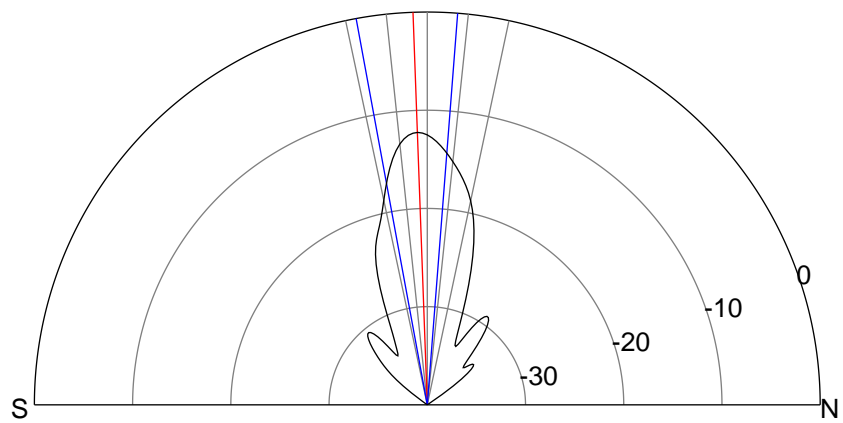
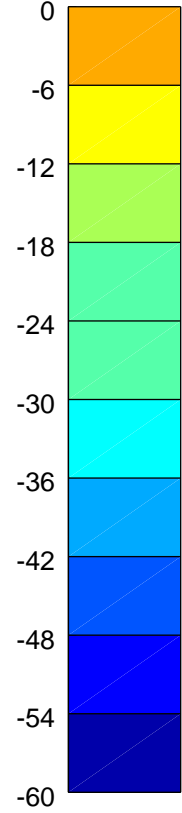
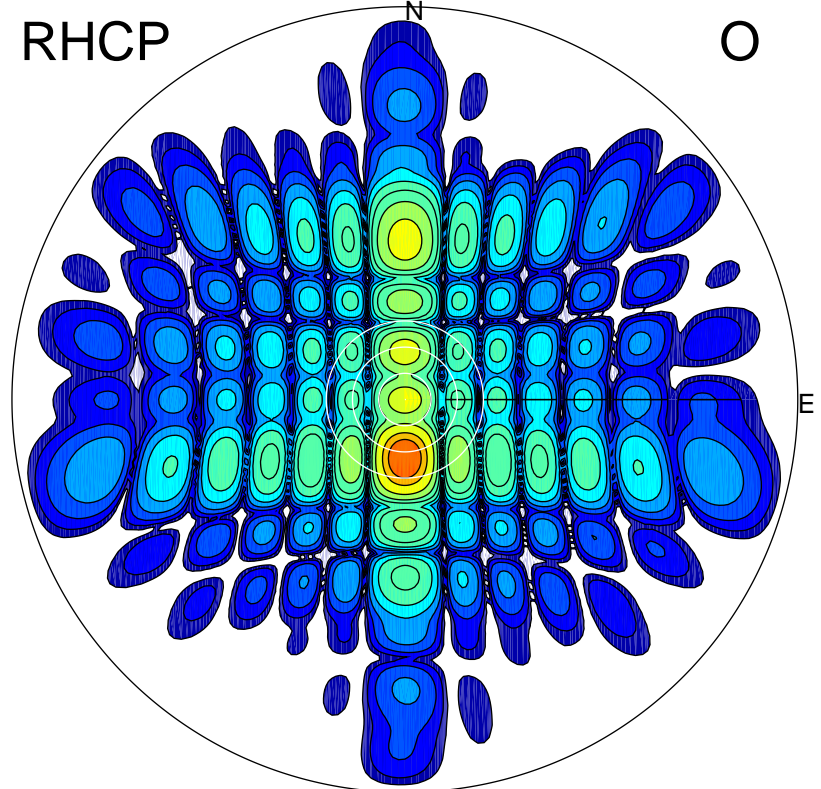
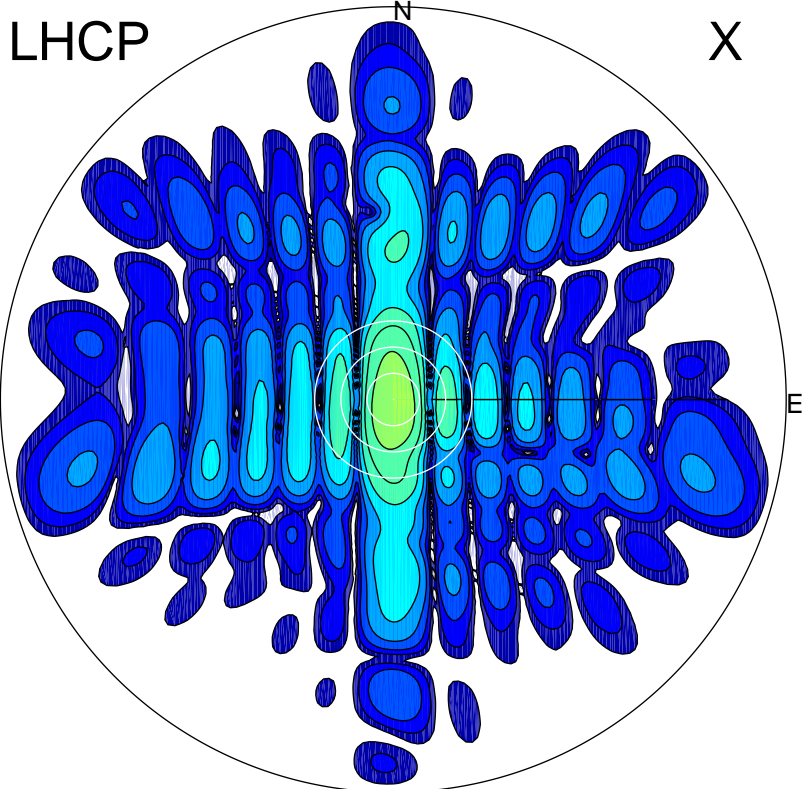


2015-10-31 14:27:05 A1 5.35000000 MHz 709.0 kW



### ERP 15.9 MW

Peak gain 13.5 dBi at Az 180 Zen 2  
RHCP gain 15.7 dBi  
N-S peak 13.5 dBi at Zen -2.1  
N-S -3 dB beamwidth 14.9 deg.

### ERP 267.2 MW

Peak gain 25.8 dBi at Az 180 Zen 13  
LHCP gain 6.1 dBi  
N-S peak 25.8 dBi at Zen -13.5  
N-S -3 dB beamwidth 8.8 deg.