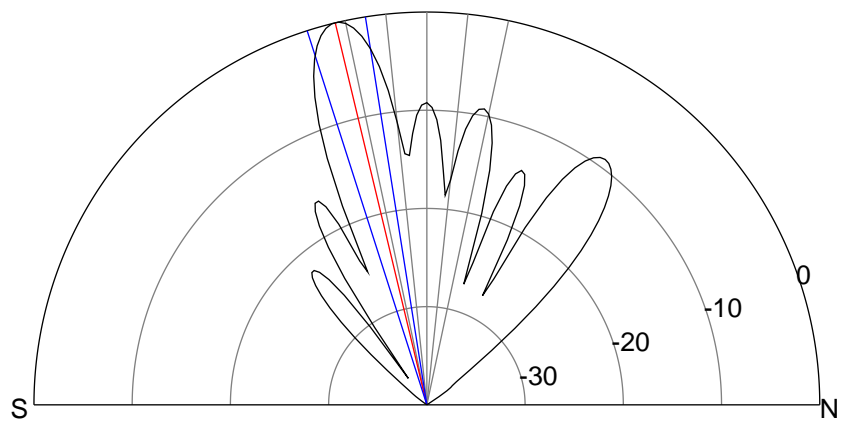
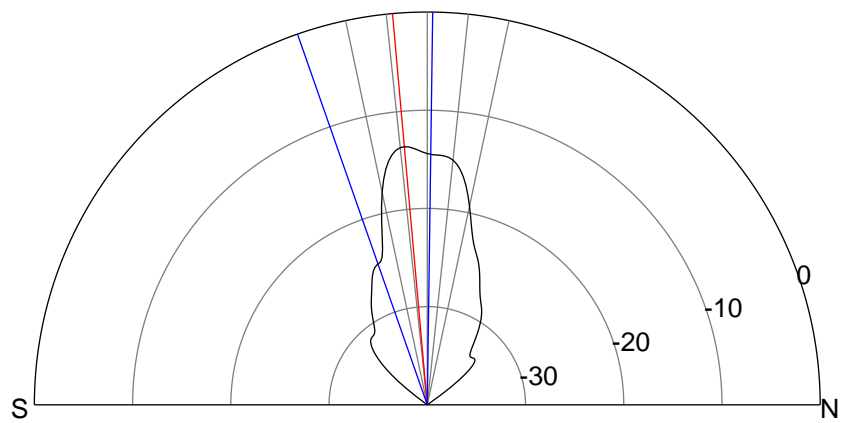
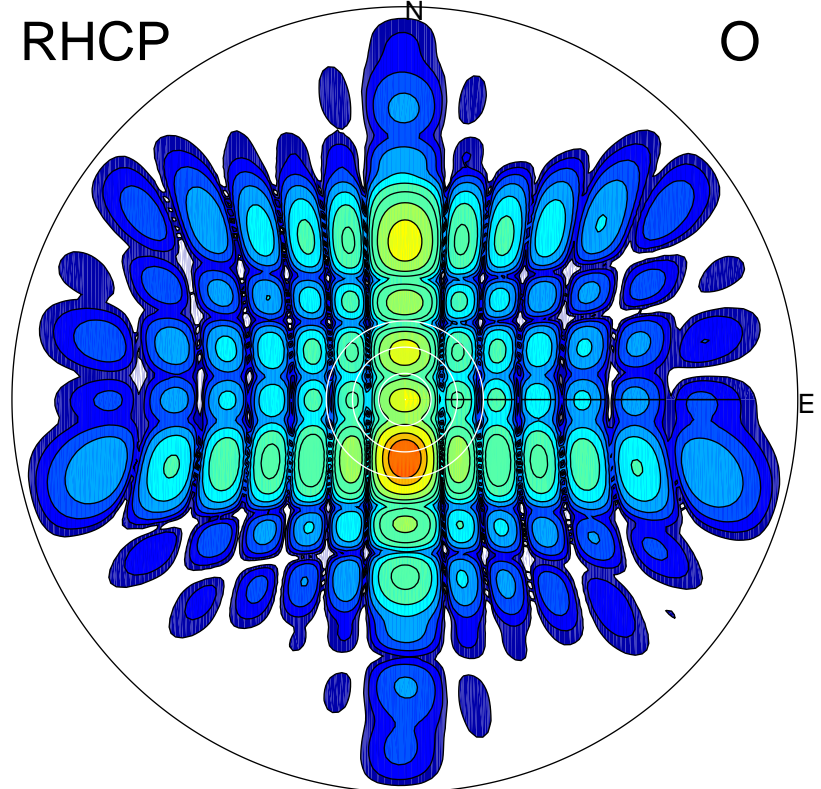
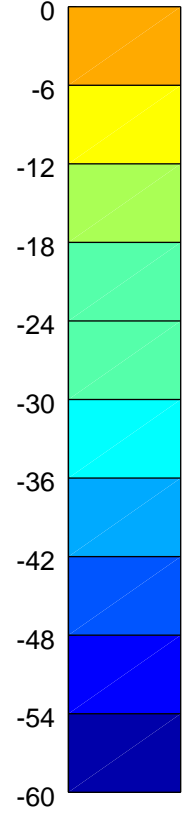
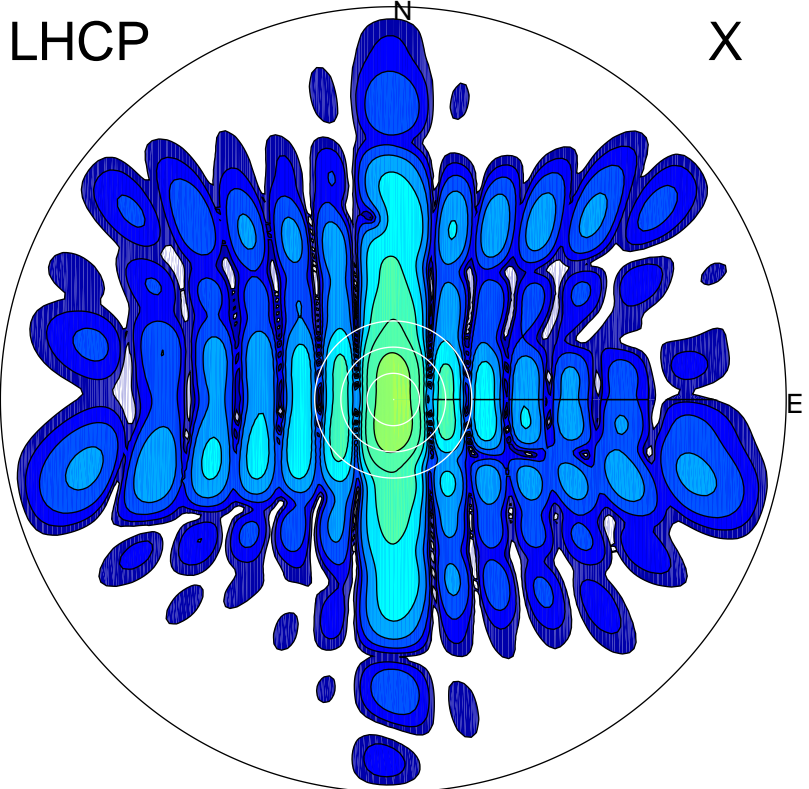


2015-10-31 14:26:25 A1 5.37000000 MHz 699.0 kW



ERP 11.7 MW

Peak gain 12.2 dBi at Az 182 Zen 5
RHCP gain 11.5 dBi
N-S peak 12.2 dBi at Zen -5.1
N-S -3 dB beamwidth 20.1 deg.

ERP 268.7 MW

Peak gain 25.8 dBi at Az 180 Zen 13
LHCP gain 6.6 dBi
N-S peak 25.9 dBi at Zen -13.5
N-S -3 dB beamwidth 8.7 deg.