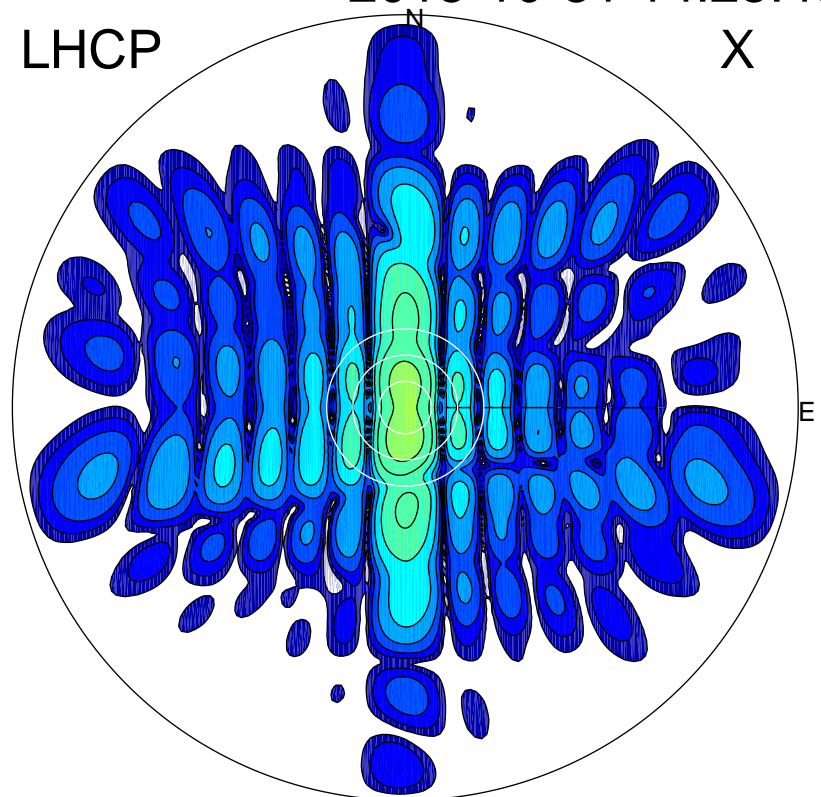


2015-10-31 14:25:45 A1 5.39000000 MHz 688.0 kW

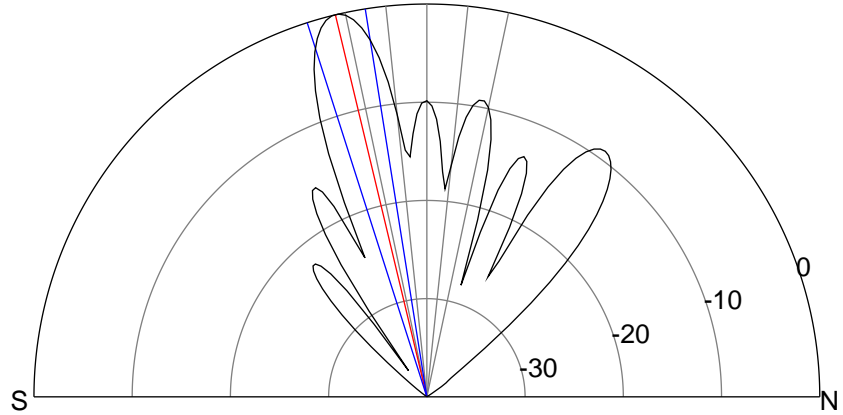
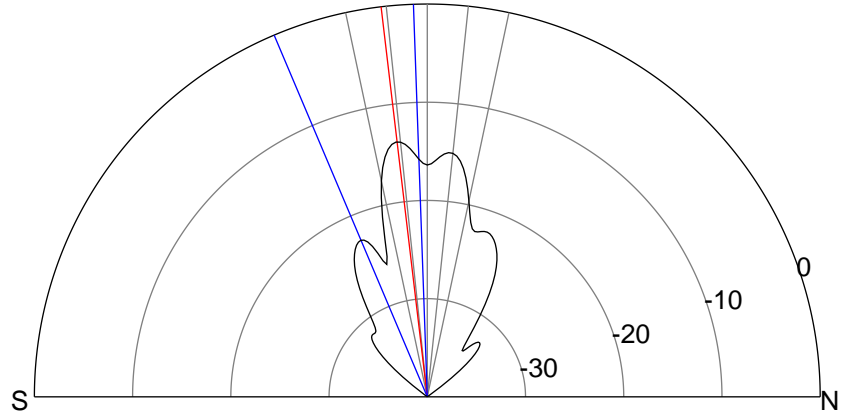
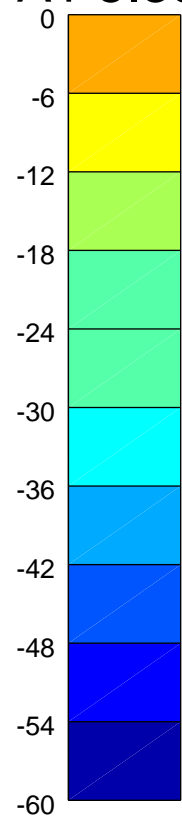
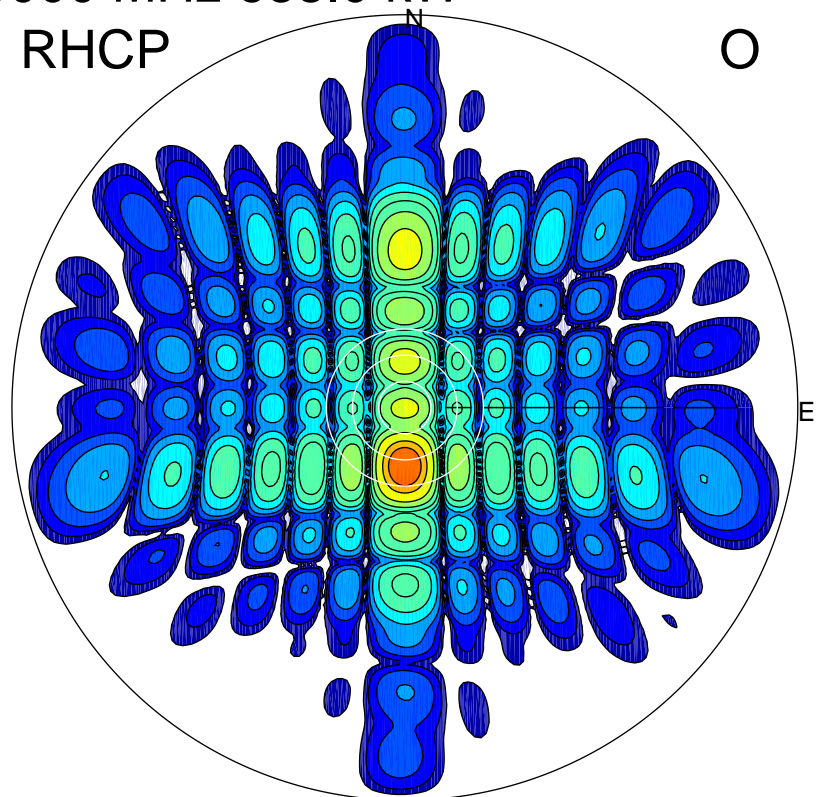
LHCP

X



RHCP

O



### ERP 11.0 MW

Peak gain 12.0 dBi at Az 180 Zen 7  
RHCP gain 18.2 dBi  
N-S peak 12.1 dBi at Zen -6.8  
N-S -3 dB beamwidth 20.9 deg.

### ERP 268.0 MW

Peak gain 25.9 dBi at Az 180 Zen 13  
LHCP gain 6.7 dBi  
N-S peak 25.9 dBi at Zen -13.5  
N-S -3 dB beamwidth 8.7 deg.