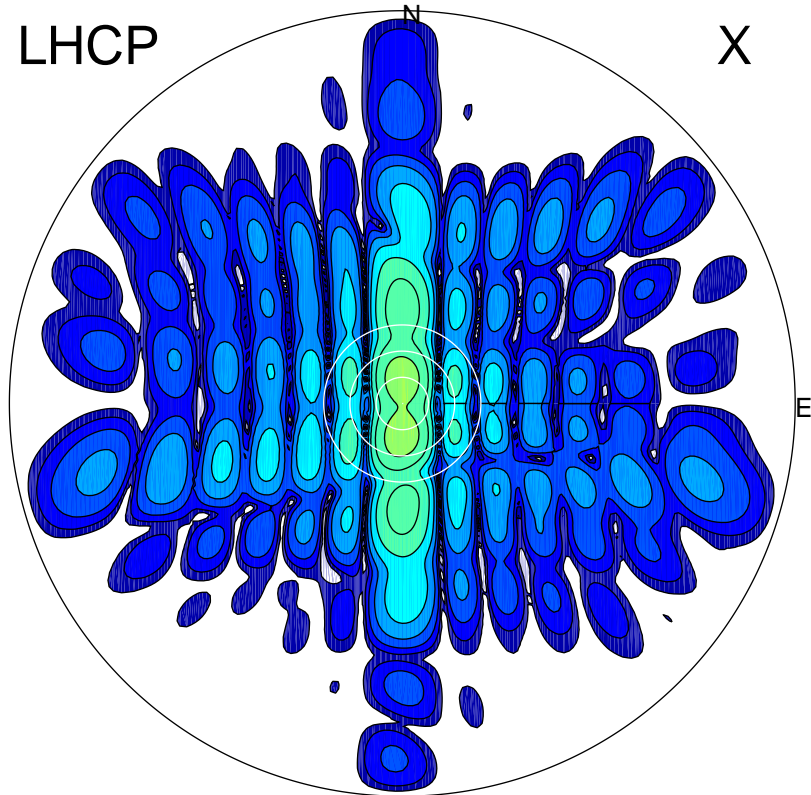


2015-10-31 14:25:05 A1 5.41000000 MHz 680.0 kW

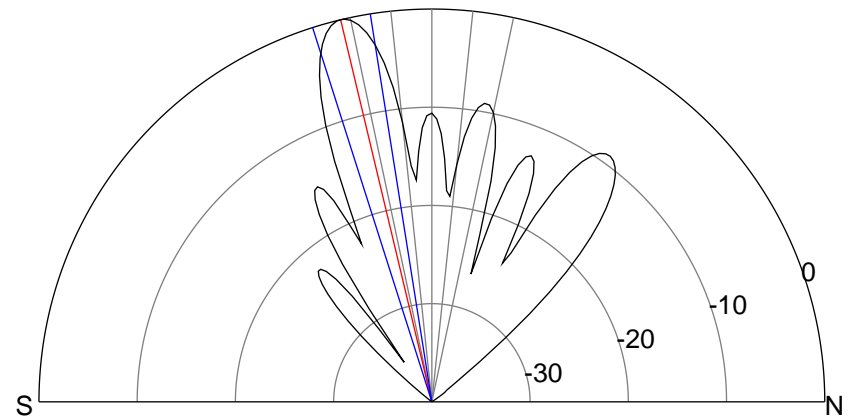
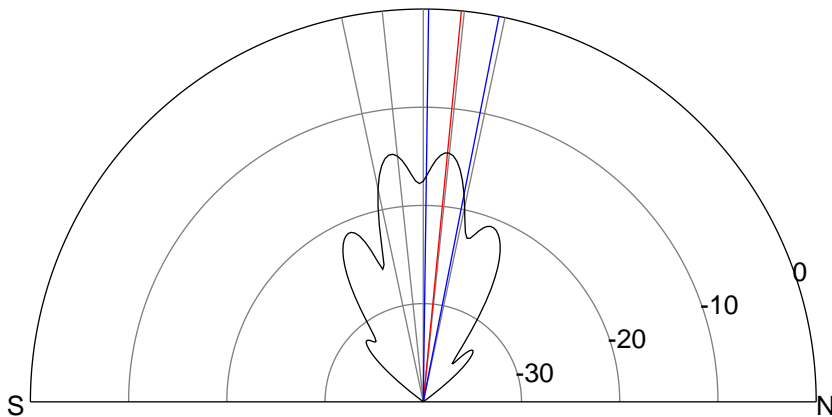
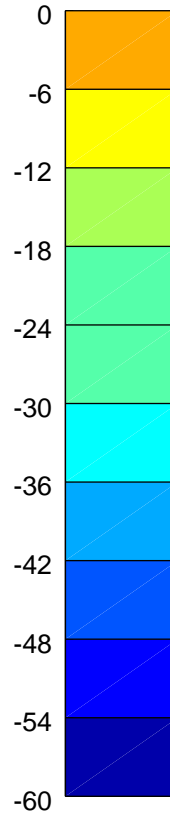
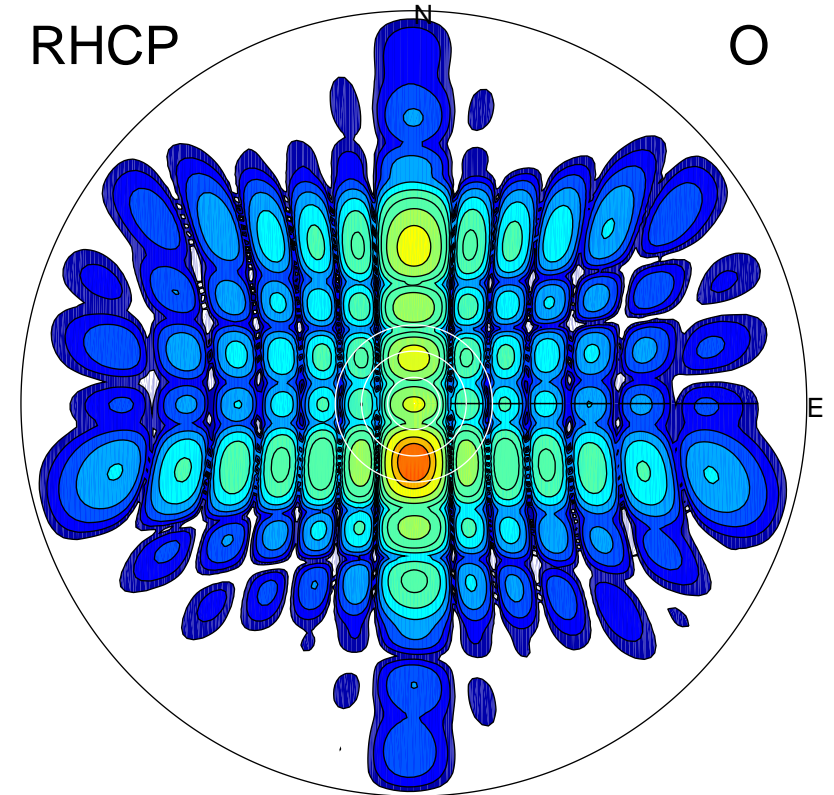
LHCP

X



RHCP

O



ERP 9.4 MW

Peak gain 11.4 dBi at Az 359 Zen 6
RHCP gain 10.2 dBi
N-S peak 11.4 dBi at Zen 5.6
N-S -3 dB beamwidth 10.3 deg.

ERP 268.2 MW

Peak gain 26.0 dBi at Az 180 Zen 13
LHCP gain 6.5 dBi
N-S peak 26.0 dBi at Zen -13.4
N-S -3 dB beamwidth 8.6 deg.