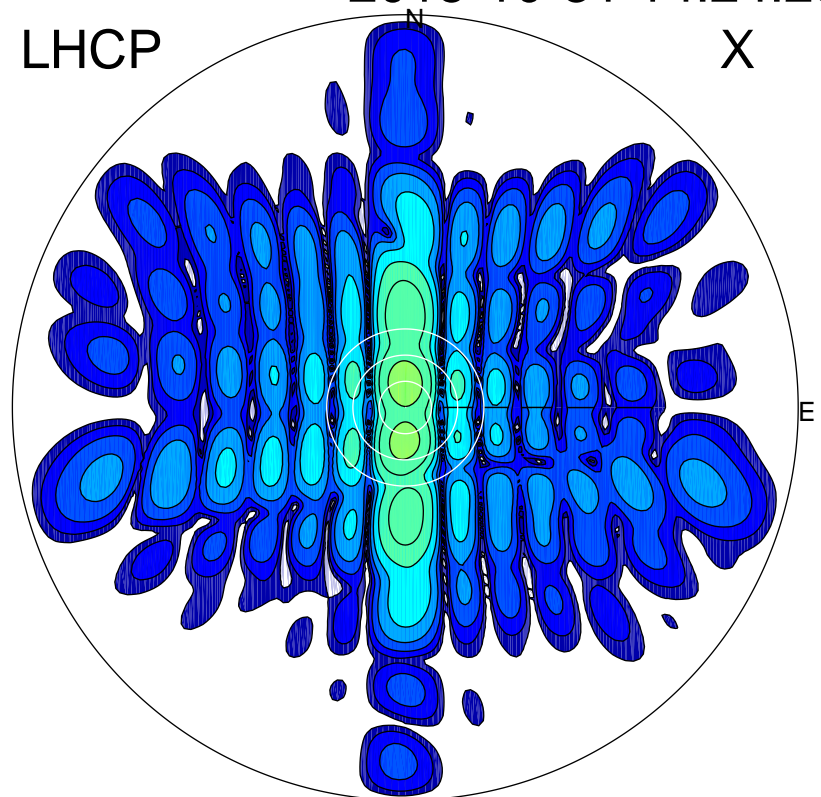


2015-10-31 14:24:25 A1 5.43000000 MHz 672.0 kW

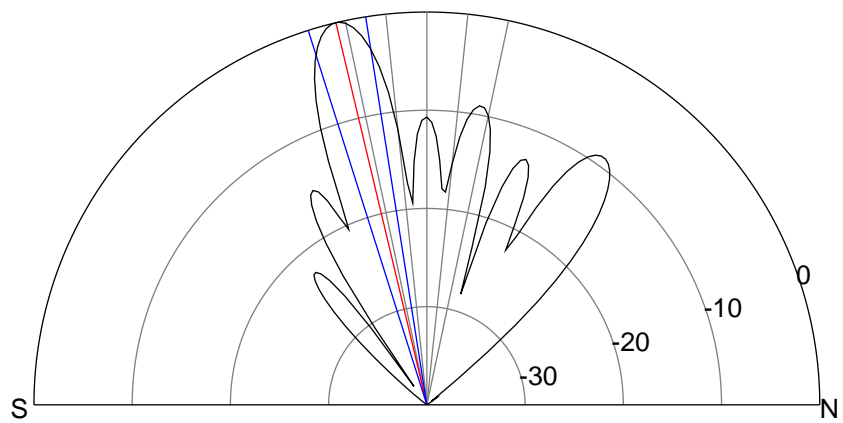
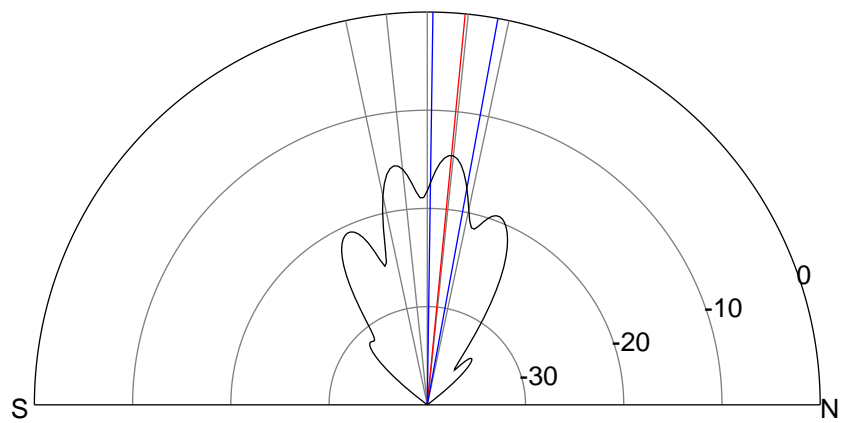
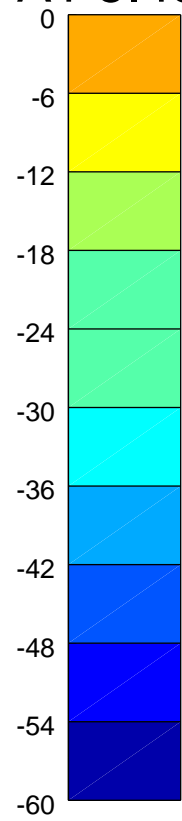
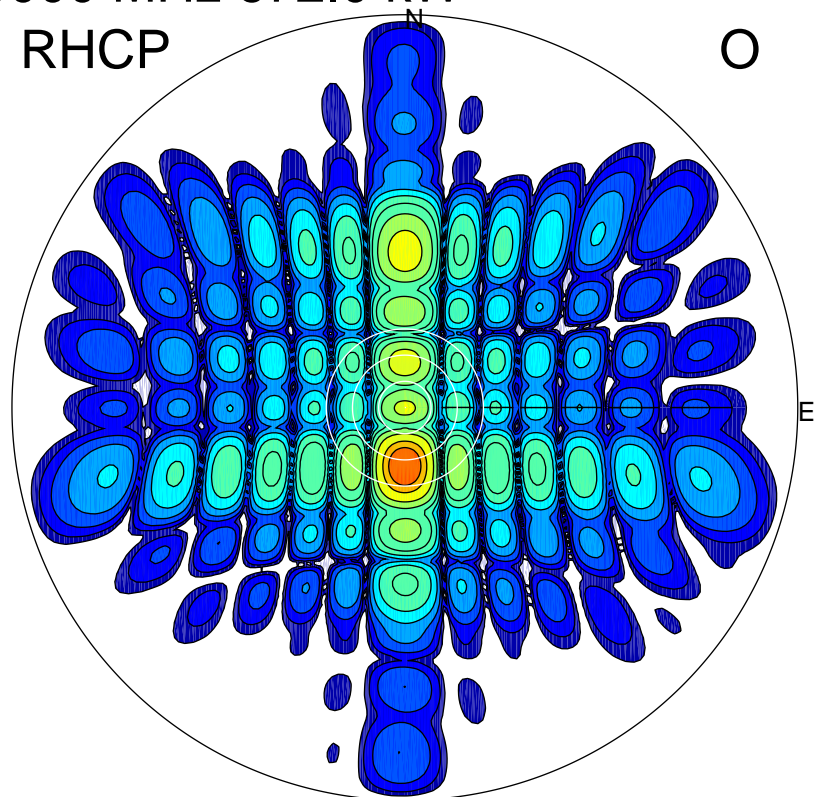
LHCP

X



RHCP

O



ERP 9.5 MW

Peak gain 11.5 dBi at Az 0 Zen 6
RHCP gain 10.7 dBi
N-S peak 11.5 dBi at Zen 5.5
N-S -3 dB beamwidth 9.5 deg.

ERP 267.1 MW

Peak gain 26.0 dBi at Az 180 Zen 13
LHCP gain 6.2 dBi
N-S peak 26.0 dBi at Zen -13.4
N-S -3 dB beamwidth 8.6 deg.