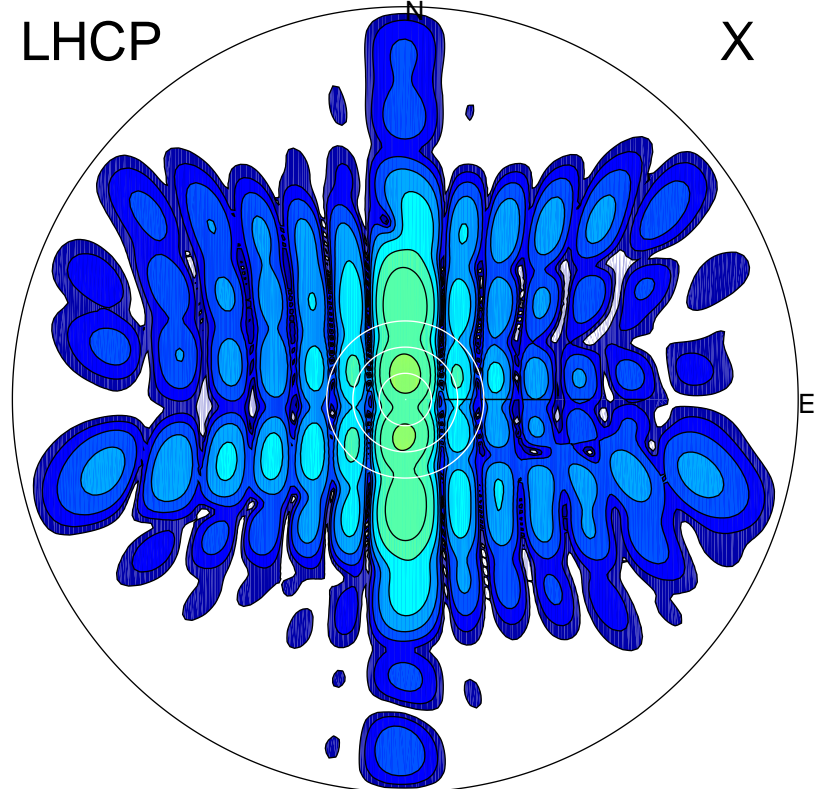


2015-10-31 14:23:45 A1 5.45000000 MHz 663.0 kW

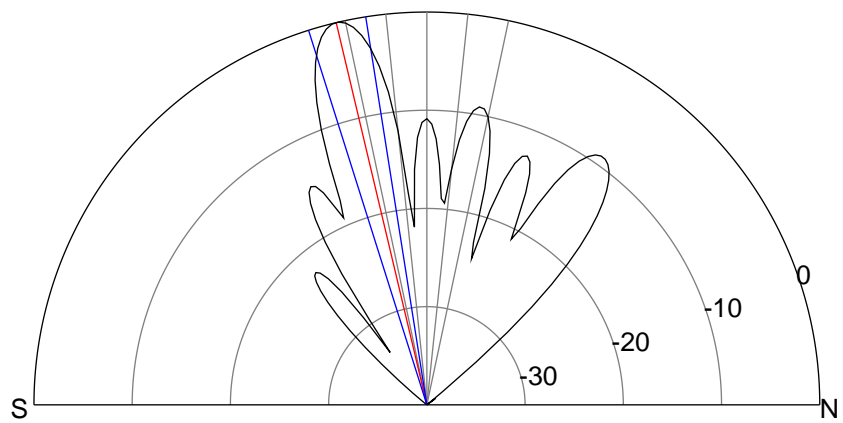
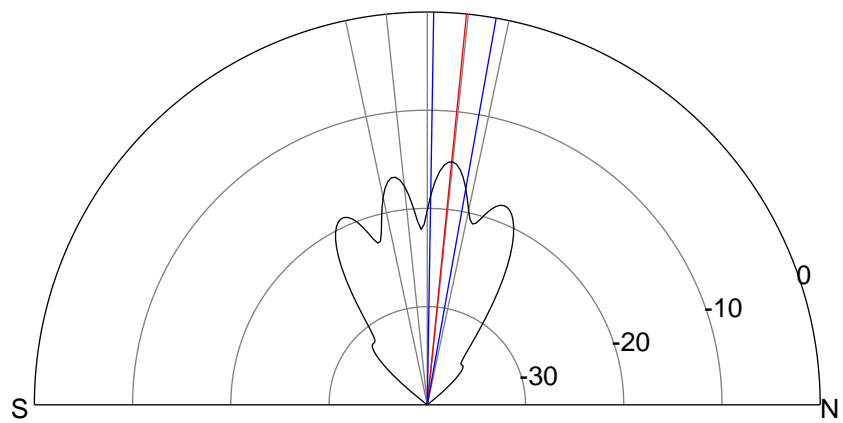
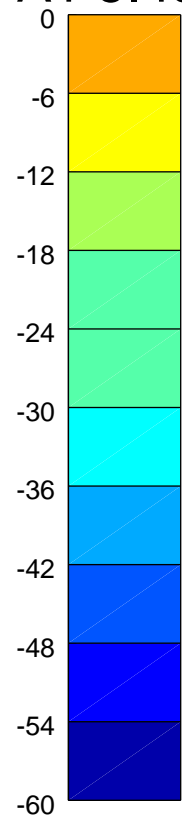
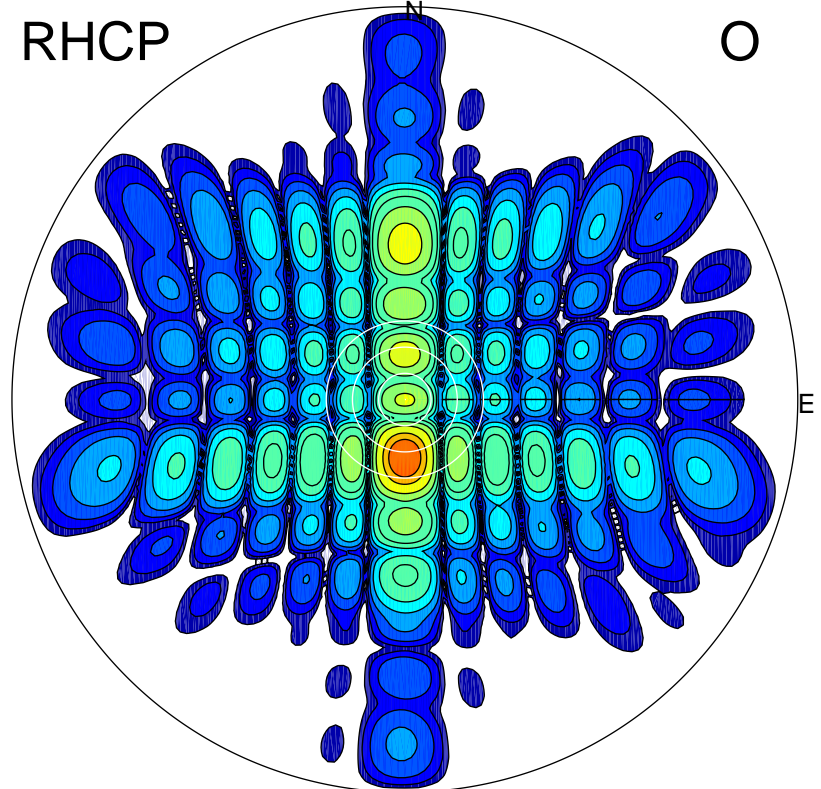
LHCP

X



RHCP

O



ERP 8.2 MW

Peak gain 10.9 dBi at Az 0 Zen 6
RHCP gain 10.2 dBi
N-S peak 10.9 dBi at Zen 5.7
N-S -3 dB beamwidth 9.2 deg.

ERP 266.5 MW

Peak gain 26.0 dBi at Az 180 Zen 13
LHCP gain 6.5 dBi
N-S peak 26.1 dBi at Zen -13.3
N-S -3 dB beamwidth 8.6 deg.